

## List of pages in this Trip Kit

Trip Kit Index

Airport Information For UKOH

Terminal Charts For UKOH

Revision Letter For Cycle 02-2021

Change Notices

Notebook

## General Information

Location: KHERSON UKR  
ICAO/IATA: UKOH / KHE  
Lat/Long: N46° 40.57', E032° 30.37'  
Elevation: 148 ft

Airport Use: Public  
Daylight Savings: Observed  
UTC Conversion: -2:00 = UTC  
Magnetic Variation: 7.0° E

Fuel Types: Jet A-1  
Repair Types: Minor Airframe, Minor Engine  
Customs: Yes  
Airport Type: IFR  
Landing Fee: Yes  
Control Tower: Yes  
Jet Start Unit: No  
LLWS Alert: No  
Beacon: No

Sunrise: 0527 Z  
Sunset: 1435 Z

## Runway Information

Runway: 03  
Length x Width: 8202 ft x 138 ft  
Surface Type: asphalt  
TDZ-Elev: 137 ft  
Lighting: Edge, ALS

Runway: 21  
Length x Width: 8202 ft x 138 ft  
Surface Type: asphalt  
TDZ-Elev: 139 ft  
Lighting: Edge, ALS

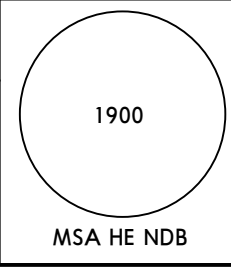
## Communication Information

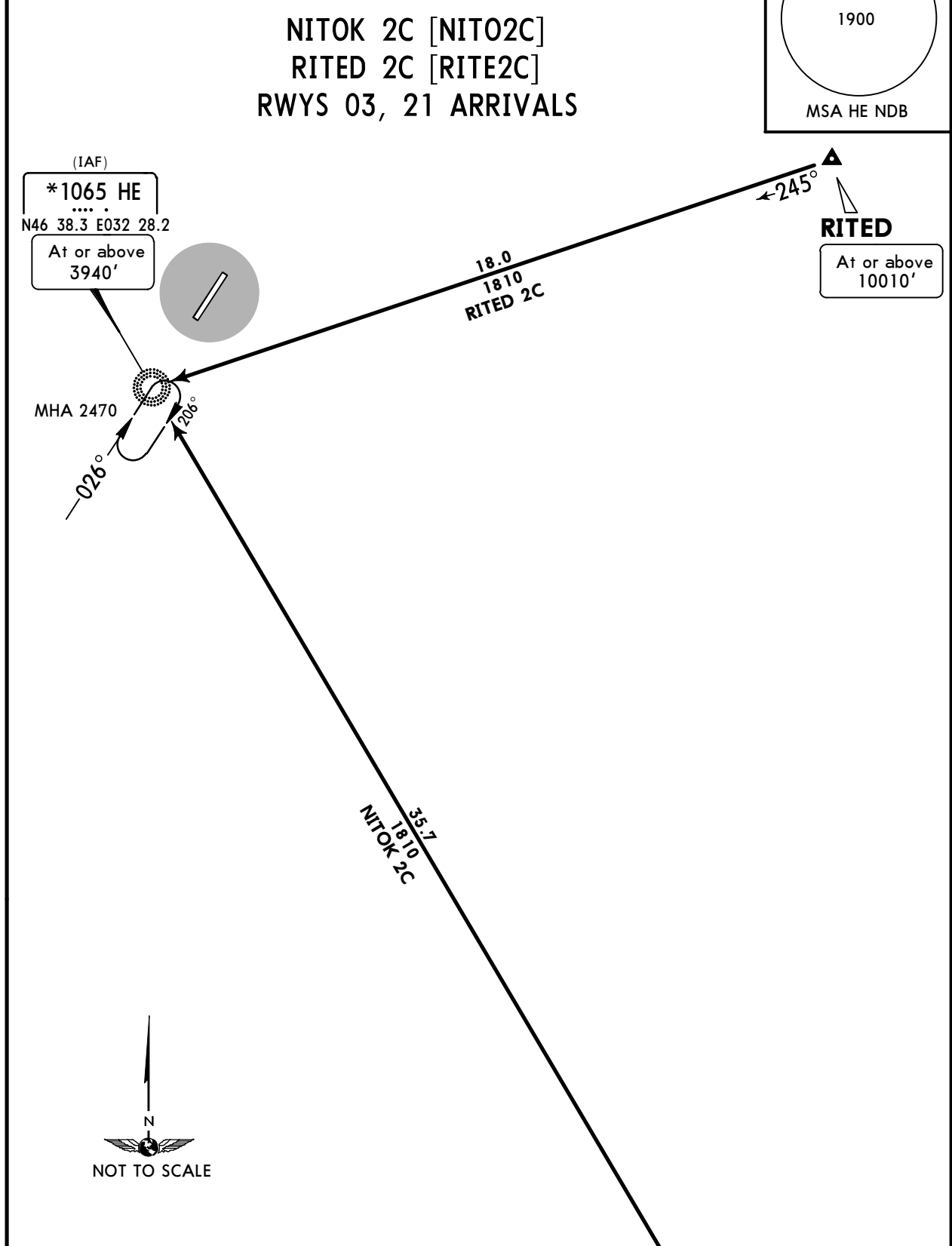
Kherson Tower: 121.200  
Kherson Start Tower: 124.000  
Odesa Information: 134.500 Flight Info Service RCO

**UKOH/KHE**  
**KHERSON INTL**

**JEPPESEN**  
10 AUG 18 **10-2** **Eff 16 Aug**

**KHERSON, UKRAINE**  
**STAR**

|   |   |   |
|---|---|---|
| Apt Elev<br><b>141'</b>   | Alt Set: hPa<br>Trans level: By ATC Trans alt: 10010' |  |
| <b>NITOK 2C [NITO2C]</b><br><b>RITED 2C [RITE2C]</b><br><b>RWYS 03, 21 ARRIVALS</b> |   |   |



| FT/METER CONVERSION |         |
|---------------------|---------|
| QNH                 |         |
| 10010'              | - 3050m |
| 8040'               | - 2450m |
| 3940'               | - 1200m |
| 2470'               | - 750m  |

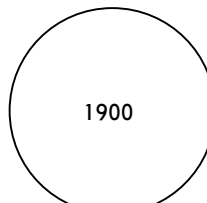
| STAR            | ROUTING  |
|-----------------|--|
| <b>NITOK 2C</b> | On 323° bearing to HE NDB, then according to approach chart. |
| <b>RITED 2C</b> | On 245° bearing to HE NDB, then according to approach chart. |

**UKOH/KHE**  
**KHERSON INTL**

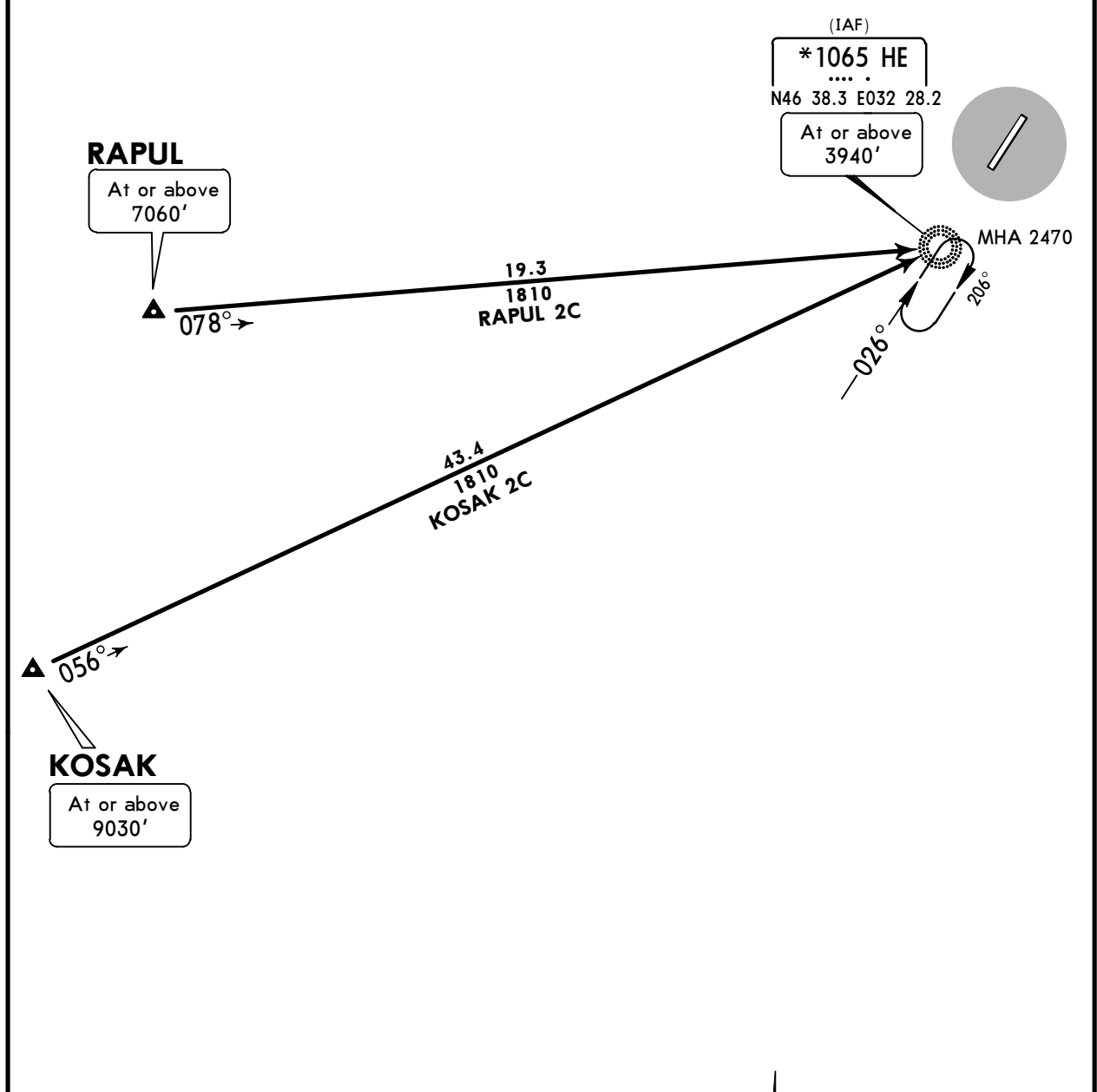
**JEPPESEN**  
 10 AUG 18 **(10-2A)** **Eff 16 Aug**

**KHERSON, UKRAINE**

**STAR**

|                         |   |   |
|-------------------------|---|---|
| Apt Elev<br><b>141'</b> | Alt Set: hPa<br>Trans level: By ATC Trans alt: 10010' | <br>1900<br>MSA HE NDB |
|-------------------------|---|---|

**KOSAK 2C [KOSA2C]**  
**RAPUL 2C [RAPU2C]**  
**RWYS 03, 21 ARRIVALS**



| FT/METER CONVERSION |         |
|---------------------|---------|
| QNH                 |         |
| 10010'              | - 3050m |
| 9030'               | - 2750m |
| 7060'               | - 2150m |
| 3940'               | - 1200m |
| 2470'               | - 750m  |



| STAR            | ROUTING  |
|-----------------|--|
| <b>KOSAK 2C</b> | On 056° bearing to HE NDB, then according to approach chart. |
| <b>RAPUL 2C</b> | On 078° bearing to HE NDB, then according to approach chart. |

**UKOH/KHE**  
**KHERSON INTL**

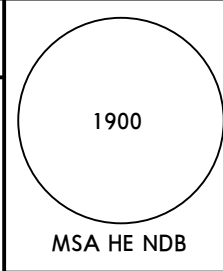
**JEPPESEN**  
 12 JUL 19 **10-3** **Eff 18 Jul**

**KHERSON, UKRAINE**

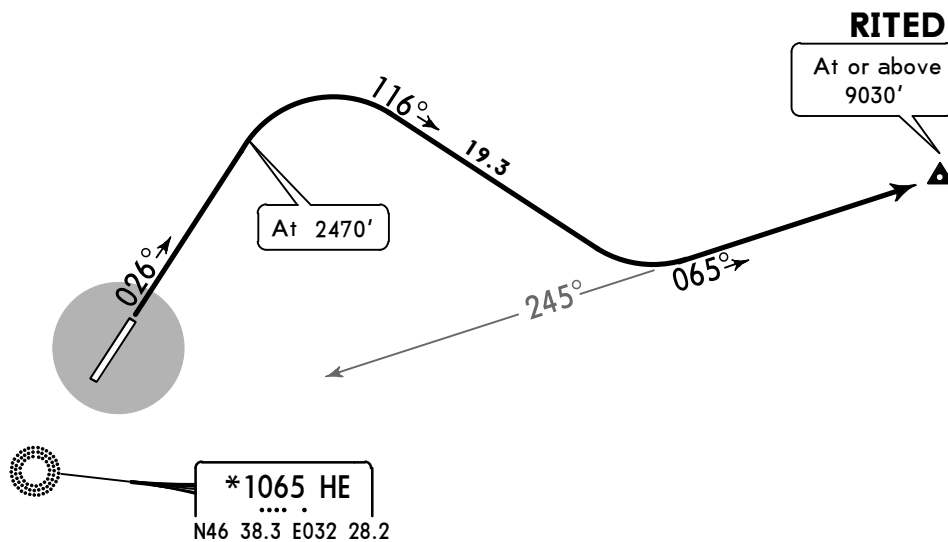
**SID**

Apt Elev  
**148'**

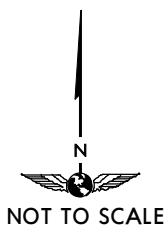
Trans level: By ATC Trans alt: 10010'  
 In unable to comply SID advise ATC.



**RITED 2A [RITE2A]**  
**DEPARTURE**  
**(RWY 03)**



| FT/METER CONVERSION |         |
|---------------------|---------|
| QNH                 |         |
| 2470'               | - 750m  |
| 9030'               | - 2750m |
| 10010'              | - 3050m |



This SID requires a minimum climb gradient of 7.5% up to 9030.

|                |     |     |      |      |      |      |
|----------------|-----|-----|------|------|------|------|
| Gnd speed-KT   | 75  | 100 | 150  | 200  | 250  | 300  |
| 7.5% V/V (fpm) | 570 | 760 | 1139 | 1519 | 1899 | 2279 |

**ROUTING**

Climb on 026° track to 2470', turn RIGHT, 116° track, turn LEFT, intercept 065° bearing from HE NDB to RITED.

**UKOH/KHE**  
**KHERSON INTL**

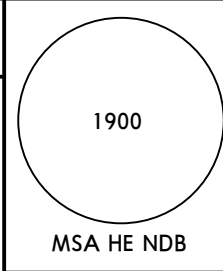
**JEPPESEN**  
 12 JUL 19 **(10-3A)** **Eff 18 Jul**

**KHERSON, UKRAINE**

**SID**

Apt Elev  
**148'**

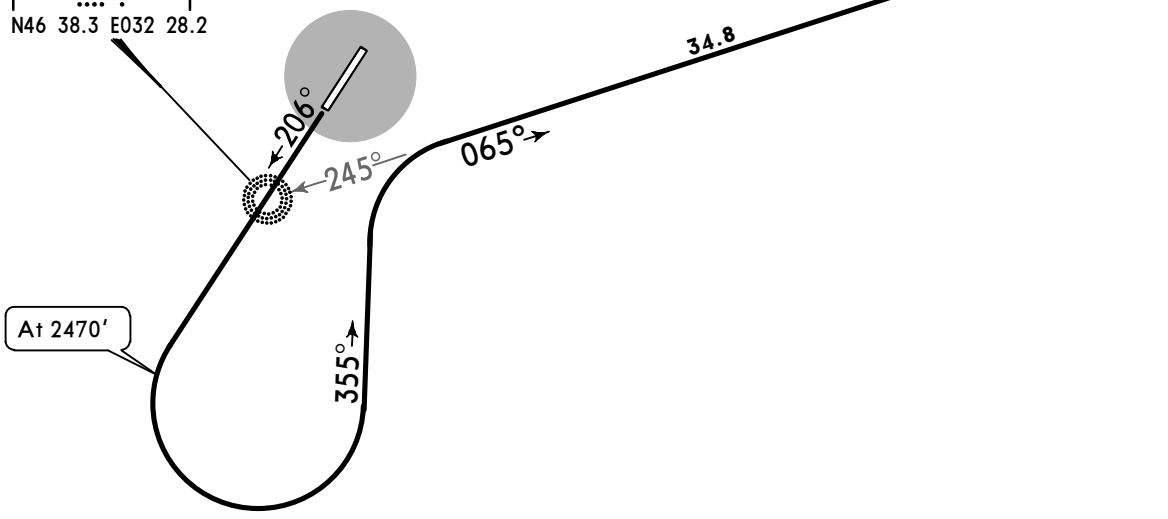
Trans level: By ATC Trans alt: 10010'  
 If unable to comply SID advise ATC.



**RITED 3B [RITE3B]**  
**DEPARTURE**  
**(RWY 21)**

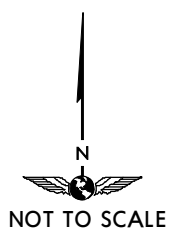
**RITED**  
 At or above  
 9030'

**\*1065 HE**  
 ....  
 N46 38.3 E032 28.2



At 2470'

| FT/METER CONVERSION |         |
|---------------------|---------|
| QNH                 |         |
| 2470'               | - 750m  |
| 9030'               | - 2750m |
| 10010'              | - 3050m |



This SID requires a minimum climb gradient of 4.2% up to 9030'.

|                |     |     |     |     |      |      |
|----------------|-----|-----|-----|-----|------|------|
| Gnd speed-KT   | 75  | 100 | 150 | 200 | 250  | 300  |
| 4.2% V/V (fpm) | 319 | 425 | 638 | 851 | 1063 | 1276 |

**ROUTING**

Climb on 206° track to 2470', turn LEFT, 355° track, turn RIGHT, intercept 065° bearing from HE NDB to RITED.

**UKOH/KHE**  
**KHERSON INTL**

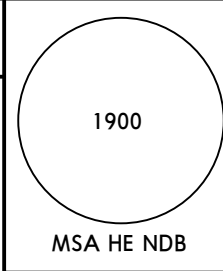
**JEPPESEN**  
 12 JUL 19 **10-3B** **Eff 18 Jul**

**KHERSON, UKRAINE**

**SID**

Apt Elev  
**148'**

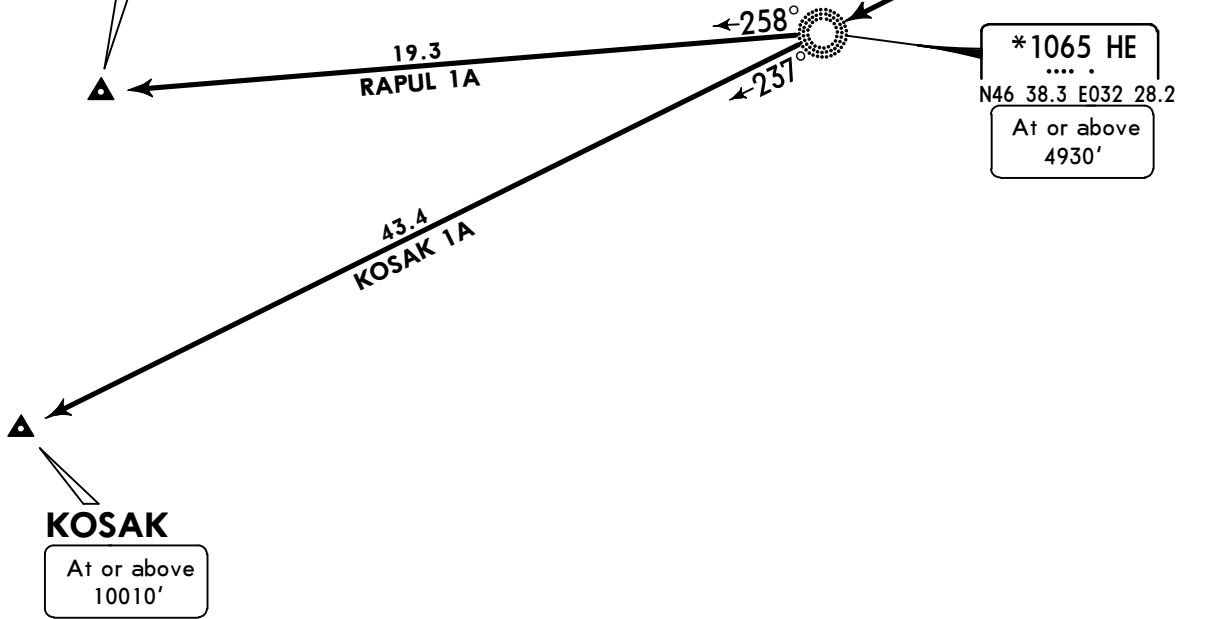
Trans level: By ATC Trans alt: 10010'  
 If unable to comply SID advise ATC.



**KOSAK 1A [KOSA1A]**  
**RAPUL 1A [RAPU1A]**  
**DEPARTURES**  
**(RWY 03)**



**RAPUL**  
 At or above  
 8040'



**KOSAK**  
 At or above  
 10010'

| FT/METER CONVERSION |         |
|---------------------|---------|
| QNH                 |         |
| 2470'               | - 750m  |
| 4930'               | - 1500m |
| 8040'               | - 2450m |
| 10010'              | - 3050m |

| SID             | ROUTING  |
|-----------------|--|
| <b>KOSAK 1A</b> | Climb on 026° track to 2470', turn RIGHT to HE NDB, turn LEFT, 237° bearing to KOSAK.  |
| <b>RAPUL 1A</b> | Climb on 026° track to 2470', turn RIGHT to HE NDB, turn RIGHT, 258° bearing to RAPUL. |

CHANGES: Airport elevation.

**UKOH/KHE**  
**KHERSON INTL**

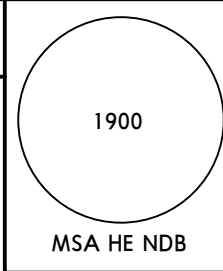
**JEPPESEN**  
 12 JUL 19 **(10-3C)** **Eff 18 Jul**

**KHERSON, UKRAINE**

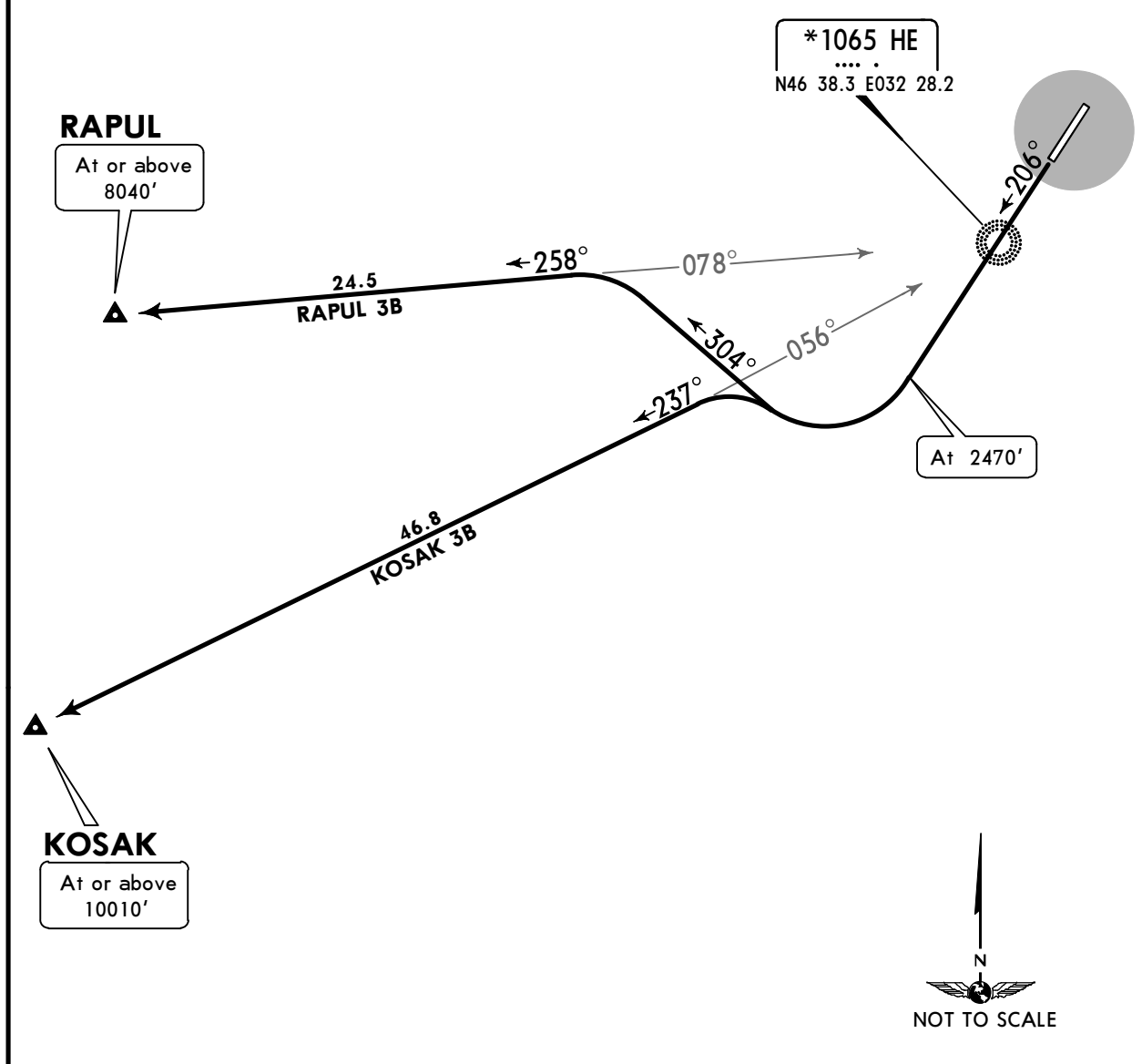
**SID**

Apt Elev  
**148'**

Trans level: By ATC Trans alt: 10010'  
 If unable to comply SID advise ATC.



**KOSAK 3B [KOSA3B]**  
**RAPUL 3B [RAPU3B]**  
**DEPARTURES**  
**(RWY 21)**



These SIDs require a minimum climb gradient of 7.0% up to 4930'.

|                |     |     |      |      |      |      |
|----------------|-----|-----|------|------|------|------|
| Gnd speed-KT   | 75  | 100 | 150  | 200  | 250  | 300  |
| 7.0% V/V (fpm) | 532 | 709 | 1063 | 1418 | 1772 | 2127 |

FT/METER CONVERSION  
 QNH

|        |   |       |
|--------|---|-------|
| 2470'  | - | 750m  |
| 4930'  | - | 1500m |
| 8040'  | - | 2450m |
| 10010' | - | 3050m |

| SID             | ROUTING   |
|-----------------|---|
| <b>KOSAK 3B</b> | Climb on 206° track to 2470', turn RIGHT, intercept 237° bearing from HE NDB to KOSAK.                        |
| <b>RAPUL 3B</b> | Climb on 206° track to 2470', turn RIGHT, 304° track, turn LEFT, intercept 258° bearing from HE NDB to RAPUL. |



**UKOH/KHE**

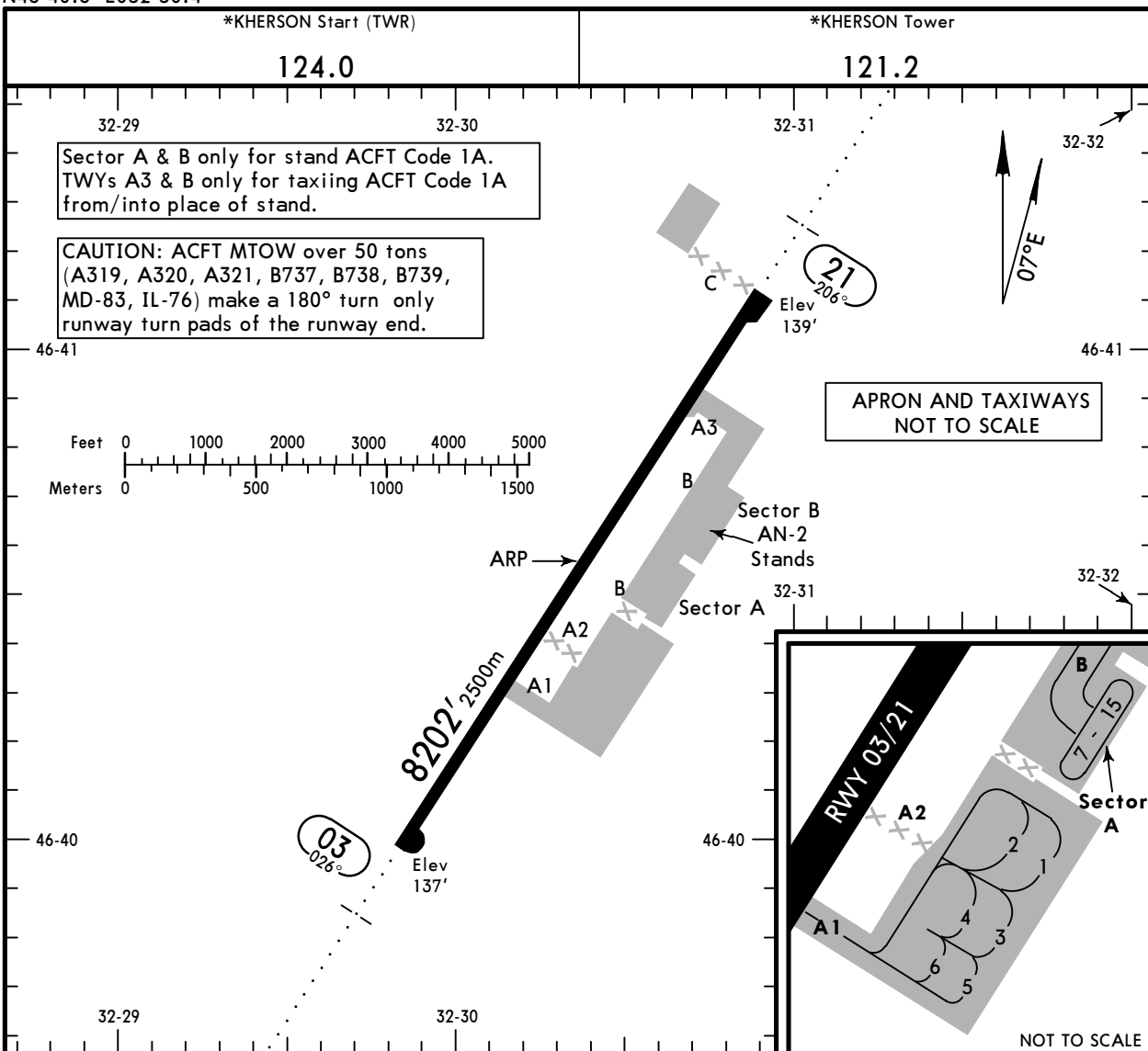
Apt Elev **148'**  
N46 40.6 E032 30.4

**JEPPesen**

20 DEC 19 **(10-9)**

**KHERSON, UKRAINE**

**KHERSON INTL**



| RWY      | ADDITIONAL RUNWAY INFORMATION |             |          | USABLE LENGTHS |                |  |  |
|----------|-------------------------------|-------------|----------|----------------|----------------|--|--|
|          | Threshold                     | Glide Slope | TAKE-OFF | Width          | LANDING BEYOND |  |  |
| 03<br>21 | RL (60m) ALS PAPI-L (3.00°)   | 7169' 2185m | ①        | 138'<br>42m    |                |  |  |

**① TAKE-OFF RUN AVAILABLE**

|                             |                             |
|-----------------------------|-----------------------------|
| <b>RWY 03:</b>              | <b>RWY 21:</b>              |
| From rwy head 8202' (2500m) | From rwy head 8202' (2500m) |
| twy A1 int 5577' (1700m)    | ② twy A3 int 6562' (2000m)  |
| ② twy A3 int 1640' (500m)   | twy A1 int 2625' (800m)     |

**② Only for ACFT Code 1A.**

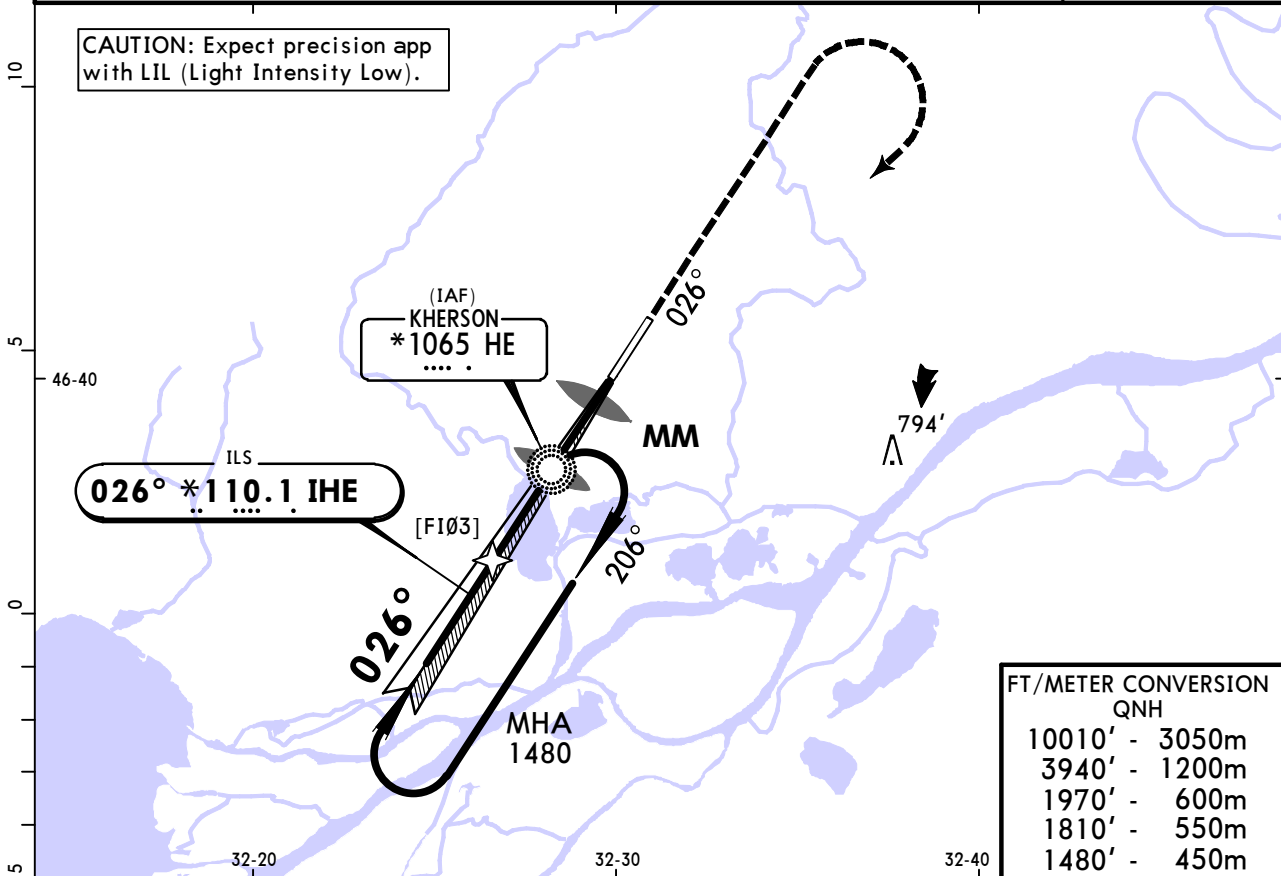
|   | TAKE-OFF                    |                              |                                |
|---|-----------------------------|------------------------------|--------------------------------|
|   | Low Visibility Take-off     |                              |                                |
|   | Day: RL & RCLM<br>Night: RL | Day: RL or RCLM<br>Night: RL | Adequate vis ref<br>(Day only) |
| A | RVR 300m                    | 400m                         | 500m                           |
| B |                             |                              |                                |
| C |                             |                              |                                |
| D |                             |                              |                                |

**UKOH/KHE**  
**KHERSON INTL**

**JEPPESEN**  
20 DEC 19 **(11-1)**

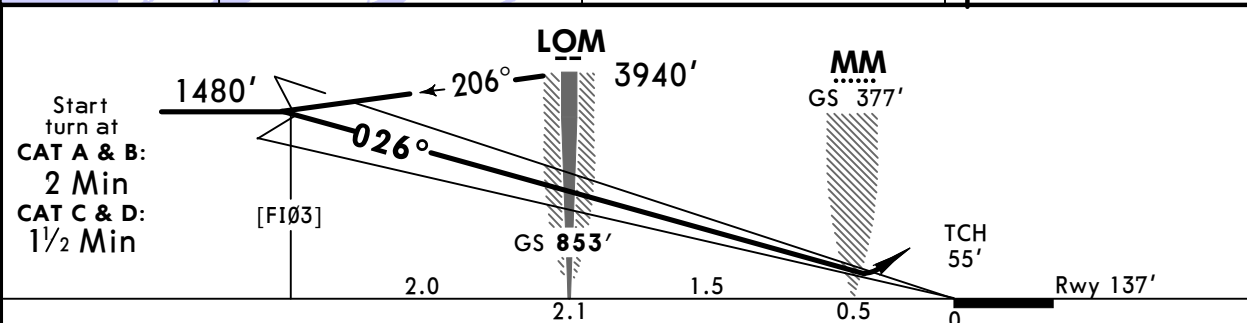
**KHERSON, UKRAINE**  
**ILS Rwy 03**

|   |                               |                           |                                |                                      |                           |
|---|-------------------------------|---------------------------|--------------------------------|--------------------------------------|---------------------------|
| *KHERSON Tower<br><b>121.2</b>  |                               |                           |                                | *KHERSON Start (TWR)<br><b>124.0</b> |                           |
| LOC IHE<br><b>*110.1</b>  | Final Apch Crs<br><b>026°</b> | LOM<br><b>853' (716')</b> | ILS DA(H)<br>Refer to Minimums | Apt Elev 148'<br>Rwy 137'            | 1900<br><br>MSA<br>HE NDB |
| <b>MISSED APCH: Climb on 026° to 1810', then turn RIGHT to HE NDB climbing to 1970', then according to chart.</b> |                               |                           |                                |                                      |                           |
| Alt Set: hPa Rwy Elev: 5 hPa Trans level: By ATC Trans alt: 10010'  |                               |                           |                                | Racetrack restricted to MAX 200 KT.  |                           |



**FT/METER CONVERSION**  
QNH

|        |       |
|--------|-------|
| 10010' | 3050m |
| 3940'  | 1200m |
| 1970'  | 600m  |
| 1810'  | 550m  |
| 1480'  | 450m  |



|               |       |     |     |     |     |     |             |                          |
|---------------|-------|-----|-----|-----|-----|-----|-------------|--------------------------|
| Gnd speed-Kts | 70    | 90  | 100 | 120 | 140 | 160 | ALS<br>PAPI | 1810'<br>↑<br>on<br>026° |
| GS            | 3.00° | 372 | 478 | 531 | 637 | 849 |             |                          |

|                                     |           |                               |  |                                   |  |                         |                     |
|-------------------------------------|-----------|-------------------------------|--|-----------------------------------|--|-------------------------|---------------------|
| <b>Standard</b>                     |           |                               |  | <b>STRAIGHT-IN LANDING RWY 03</b> |  | <b>CIRCLE-TO-LAND 1</b> |                     |
| ILS                                 |           |                               |  | LOC (GS out)                      |  |                         |                     |
| DA(H) A: 380' (243') C: 399' (262') |           | B: 390' (253') D: 409' (272') |  |                                   |  |                         |                     |
| FULL                                |           | ALS out                       |  |                                   |  |                         |                     |
| A                                   | RVR 1000m |                               |  |                                   |  | Max Kts                 | MDA(H) VIS          |
| B                                   |           |                               |  |                                   |  | 100                     | 610' (473') 1500m   |
| C                                   | RVR 1100m | RVR 1300m                     |  | NOT AUTHORIZED                    |  | 135                     | 640' (503') 1600m   |
| D                                   |           |                               |  |                                   |  | 180                     | 890' (753') 2400m   |
|                                     |           |                               |  |                                   |  | 205                     | 1170' (1033') 3600m |

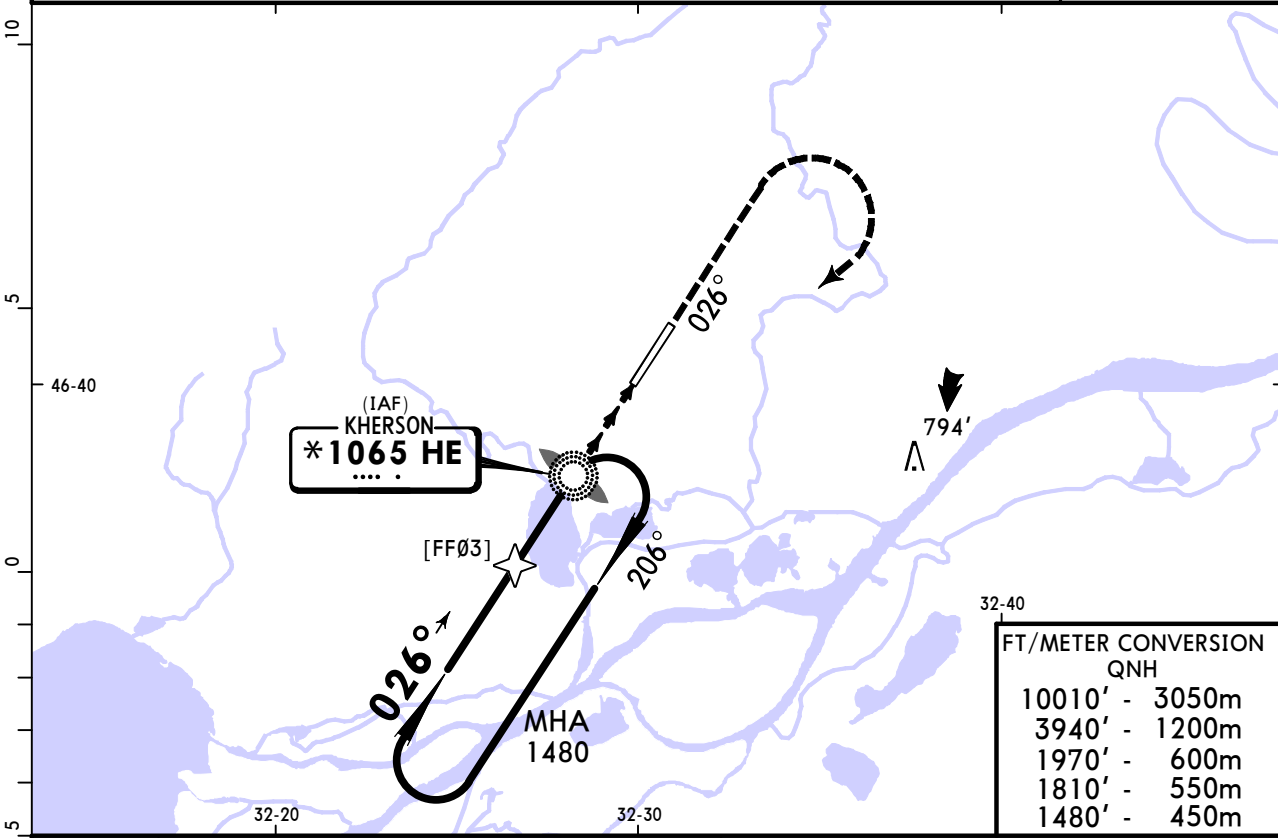
1 Circling height based on rwy 03 thresh elev of 137'.  
CHANGES: None. © JEPPESEN, 2015, 2019. ALL RIGHTS RESERVED.

**UKOH/KHE**  
**KHERSON INTL**

**JEPPESEN**  
17 MAY 19 **(16-1)** Eff 23 May

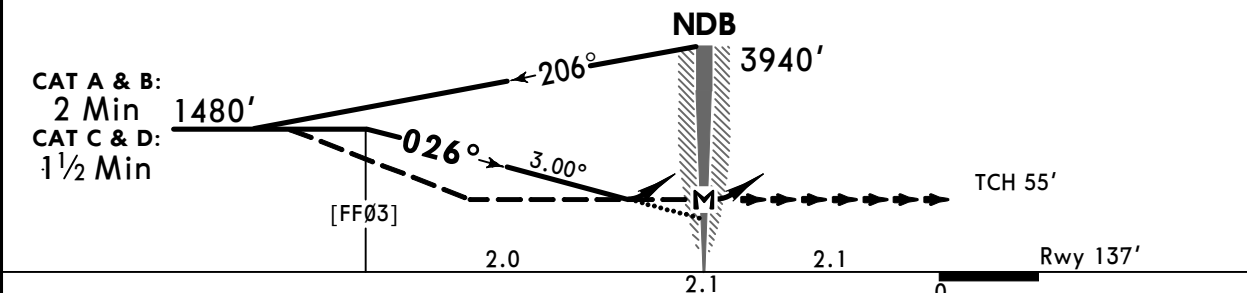
**KHERSON, UKRAINE**  
**NDB Rwy 03**

|  |                               |                 |                                 |                   |                           |
|--|-------------------------------|-----------------|---------------------------------|-------------------|---------------------------|
| *KHERSON Tower   |                               |                 | *KHERSON Start (TWR)            |                   |                           |
| 121.2  |                               |                 | 124.0                           |                   |                           |
| NDB HE<br><b>*1065</b>   | Final Apch Crs<br><b>026°</b> | No FAF          | DA/MDA(H)<br><b>560'</b> (423') | Apt Elev 146'     | 1900<br><br>MSA<br>HE NDB |
| <b>MISSED APCH:</b> Climb on 026° to 1810', then turn RIGHT to NDB climbing to 1970', then according to chart. |                               |                 |                                 |                   |                           |
| Alt Set: hPa   |                               | Rwy Elev: 5 hPa | Trans level: By ATC             | Trans alt: 10010' |                           |
| Racetrack restricted to MAX 200 KT.  |                               |                 |                                 |                   |                           |



| FT/METER CONVERSION |       |
|---------------------|-------|
| QNH                 |       |
| 10010'              | 3050m |
| 3940'               | 1200m |
| 1970'               | 600m  |
| 1810'               | 550m  |
| 1480'               | 450m  |

|             |       |       |
|-------------|-------|-------|
| DIST to NDB | 2.0   | 1.0   |
| ALTITUDE    | 1480' | 1170' |



|               |          |     |     |     |     |     |             |                       |     |
|---------------|----------|-----|-----|-----|-----|-----|-------------|-----------------------|-----|
| Gnd speed-Kts | 70       | 90  | 100 | 120 | 140 | 160 | ALS<br>PAPI | 1810'<br>↑<br>on 026° |     |
| Descent Angle | 3.00°    | 372 | 478 | 531 | 637 | 743 |             |                       | 849 |
| MAP at NDB    | Standard |     |     |     |     |     |             |                       |     |

| STRAIGHT-IN LANDING RWY 03   |           |                           |           | CIRCLE-TO-LAND 1 |                                |
|------------------------------|-----------|---------------------------|-----------|------------------|--------------------------------|
| CDFA                         |           | non-CDFA                  |           | Max Kts          | MDA(H) VIS                     |
| DA/MDA(H) <b>560'</b> (423') |           | MDA(H) <b>560'</b> (423') |           |                  |                                |
| ALS out                      |           | ALS out                   |           | 100              | <b>610'</b> (473') 1500m       |
| A                            | RVR 1800m | RVR 2000m                 | RVR 2000m | RVR 2200m        | 135 <b>640'</b> (503') 1600m   |
| B                            |           |                           | RVR 2200m | RVR 2400m        | 180 <b>890'</b> (753') 2400m   |
| C                            |           |                           |           |                  | 205 <b>1170'</b> (1033') 3600m |
| D                            |           |                           |           |                  |                                |

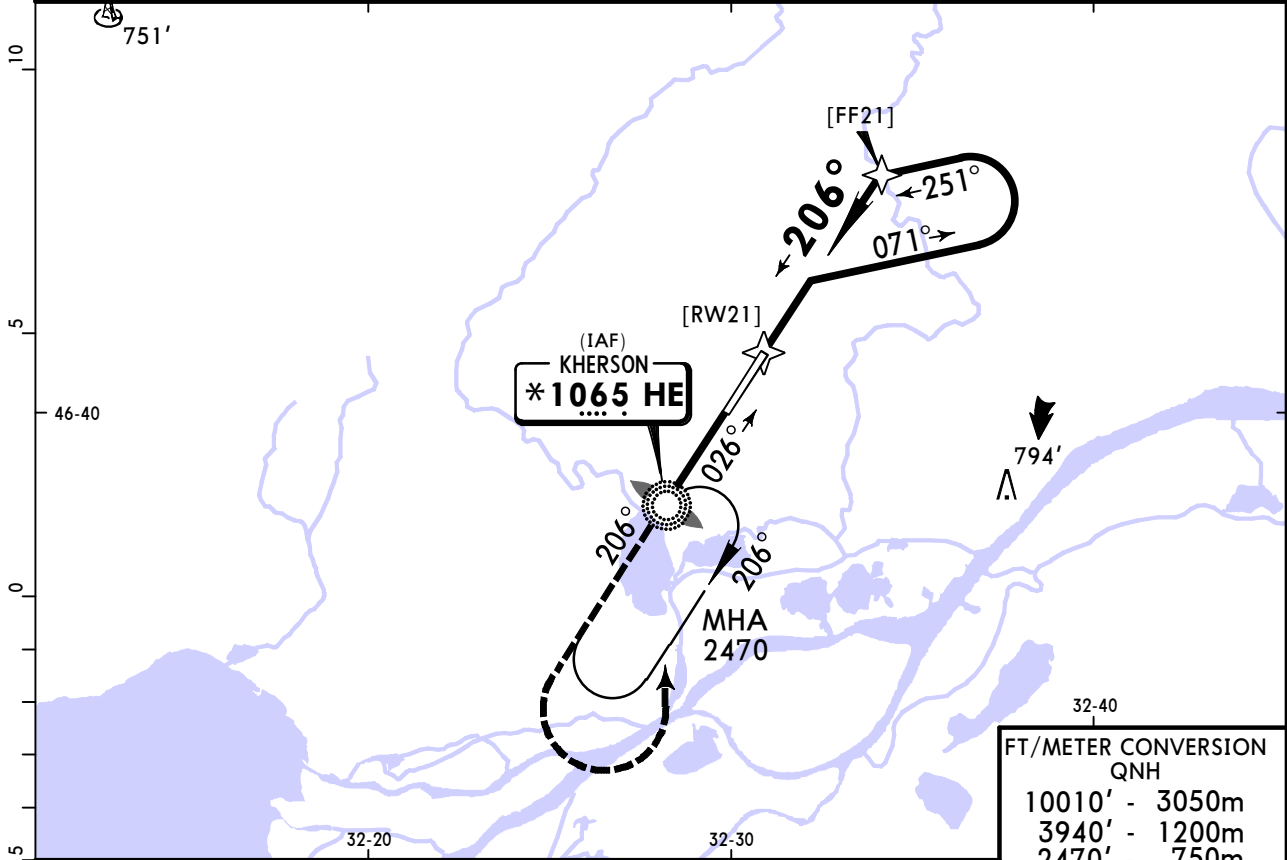
1 Circling height based on rwy 03 thresh elev of 137'. 2 or higher straight-in minimums.

**UKOH/KHE**  
**KHERSON INTL**

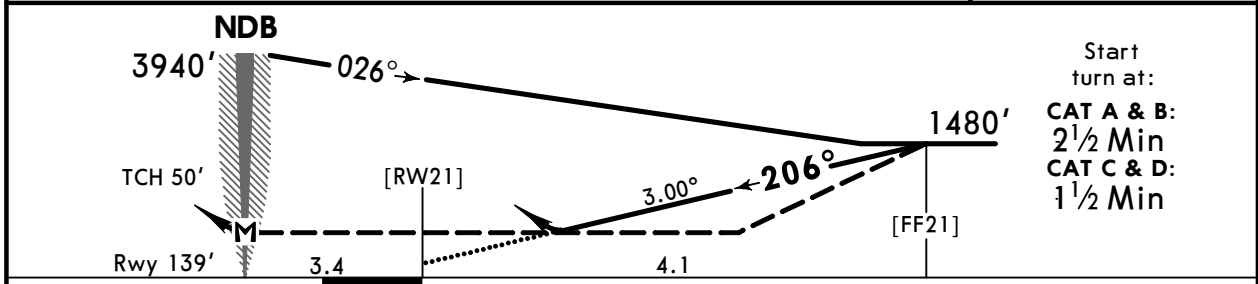
**JEPPESSEN**  
17 MAY 19 **16-2** **Eff 23 May**

**KHERSON, UKRAINE**  
**NDB Rwy 21**

|  |                               |        |                                 |  |                           |  |
|--|-------------------------------|--------|---------------------------------|--|---------------------------|--|
| *KHERSON Tower<br><b>121.2</b>   |                               |        |                                 | *KHERSON Start (TWR)<br><b>124.0</b>     |                           |  |
| NDB HE<br><b>*1065</b>   | Final Apch Crs<br><b>206°</b> | No FAF | DA/MDA(H)<br><b>640'</b> (501') | Apt Elev 146'                            | 1900<br><br>MSA<br>HE NDB |  |
| <b>MISSED APCH: Climb on 206° to 1480', then turn LEFT to HE NDB climbing to 1970', then according to chart.</b> |                               |        |                                 |  |                           |  |
| Alt Set: hPa Rwy Elev: 5 hPa Trans level: By ATC Trans alt: 10010'   |                               |        |                                 | Procedure turn restricted to MAX 200 KT. |                           |  |



|              |      |       |       |
|--------------|------|-------|-------|
| DIST to RW21 | 2.0  | 3.0   | 4.0   |
| ALTITUDE     | 820' | 1140' | 1450' |



|                     |     |     |     |     |     |     |             |               |
|---------------------|-----|-----|-----|-----|-----|-----|-------------|---------------|
| Gnd speed-Kts       | 70  | 90  | 100 | 120 | 140 | 160 | ALS<br>PAPI | 1480' on 206° |
| Descent Angle 3.00° | 372 | 478 | 531 | 637 | 743 | 849 |             |               |
| MAP at NDB          |     |     |     |     |     |     |             |               |

|                 |  |           |                           |           |                |                                   |                                   |
|-----------------|--|-----------|---------------------------|-----------|----------------|-----------------------------------|-----------------------------------|
| <b>PANS OPS</b> | <b>Standard</b> STRAIGHT-IN LANDING RWY 21 |           |                           |           | CIRCLE-TO-LAND |                                   |                                   |
|                 | CDFA                                       |           | non-CDFA                  |           | Max Kts        | MDA(H) VIS                        |                                   |
|                 | DA/MDA(H) <b>640'</b> (501')               |           | MDA(H) <b>640'</b> (501') |           |                |                                   |                                   |
|                 | ALS out                                    |           | ALS out                   |           | 100            | <b>640'</b> (501') <b>2</b> 1500m |                                   |
|                 | A  | RVR 1500m |                           | RVR 2300m | RVR 2600m      | 135                               | <b>640'</b> (501') <b>2</b> 1600m |
| B               | RVR 2100m                                  |           | RVR 2400m                 | RVR 2500m | RVR 2800m      | 180                               | <b>890'</b> (751') <b>2</b> 2400m |
| C               | RVR 2100m                                  |           | RVR 2400m                 | RVR 2500m | RVR 2800m      | 205                               | <b>1170'</b> (1031') 3600m        |
| D               | RVR 2100m                                  |           | RVR 2400m                 | RVR 2500m | RVR 2800m      |                                   |                                   |

**1** Circling height based on rwy 21 thresh elev of 139'. **2** or higher straight-in minimums.

## Chart changes since cycle 01-2021

ADD = added chart, REV = revised chart, DEL = deleted chart.

| ACT | PROCEDURE IDENT | INDEX | REV DATE | EFF DATE |
|-----|-----------------|-------|----------|----------|
|-----|-----------------|-------|----------|----------|

**KHERSON, (KHERSON INTL - UKOH)**

## TERMINAL CHART CHANGE NOTICES

No Chart Change Notices for Airport UKOH