

List of pages in this Trip Kit

Trip Kit Index

Airport Information For UKLL

Terminal Charts For UKLL

Revision Letter For Cycle 02-2021

Change Notices

Notebook

General Information

Location: LVIV UKR
ICAO/IATA: UKLL / LWO
Lat/Long: N49° 48.58', E023° 57.50'
Elevation: 1077 ft

Airport Use: Public
Daylight Savings: Observed
UTC Conversion: -2:00 = UTC
Magnetic Variation: 6.0° E

Fuel Types: Jet A-1
Repair Types: Major Airframe, Major Engine
Customs: Yes
Airport Type: IFR
Landing Fee: Yes
Control Tower: Yes
Jet Start Unit: No
LLWS Alert: No
Beacon: No

Sunrise: 0612 Z
Sunset: 1458 Z

Runway Information

Runway: 31
Length x Width: 10843 ft x 148 ft
Surface Type: concrete
TDZ-Elev: 1074 ft
Lighting: Edge, ALS, Centerline, TDZ
Displaced Threshold: 394 ft

Runway: 13
Length x Width: 10843 ft x 148 ft
Surface Type: concrete
TDZ-Elev: 1069 ft
Lighting: Edge, ALS, Centerline, TDZ
Displaced Threshold: 1345 ft

Communication Information

ATIS: 128.650
ATIS: 122.925 Non-English
ATIS: 128.625
Lviv Tower: 128.000
Lviv Ground: 120.050
Lviv Radar ACC: 120.525 RCO

Lviv Information: 126.825 Flight Info Service RCO

UKLL/LWO
LVIV INTL

JEPPESEN

14 FEB 20

10-1P

Eff 27 Feb

LVIV, UKRAINE
AIRPORT BRIEFING

1. GENERAL

1.1. ATIS

ATIS 128.625
122.925 (Russian)

1.2. NOISE ABATEMENT PROCEDURES

Flights over the city below 2960' are prohibited.

1.3. LOW VISIBILITY PROCEDURES (LVP)

1.3.1. GENERAL

LVP shall be applied when RVR is less than 600m.

Pilots will be informed about the beginning of the procedures via ATIS or by ATC.

1.3.2. ARRIVAL

After landing, pilots should report about the vacation of RWY and ILS critical area.

Arrival ACFT are met by Follow-me car that will escort it to the stand.

1.3.3. DEPARTURE

Pilots shall request for clearance to start up engines indicating the number of the ACFT stand (apron).

Clearance for towing and taxiing out of ACFT stand shall be requested when ACFT is ready to execute it immediately.

Taxiing of ACFT is executed behind Follow-me car.

1.4. TAXI PROCEDURES

TWYs 1, 2, 3, 6, 7 and 8 for ACFT code A, B and C.

TWYs 4 and 5 for ACFT code A, B, C and D.

It is approved to taxi through the stands 8 thru 13, if they are free, if escorted by Follow-me car.

TWY 6 not to be used from 1 DEC till 1 APR every year.

Maneuvering of the ACFT at all sites of aerodrome carried out at the minimum necessary power of engine.

1.5. OTHER INFORMATION

Birds in vicinity of APT.

In case of communication failure in order to operate aerodrome traffic, light signals are emitted by Signal Light Gun.

UKLL/LWO
LVIV INTL

JEPPESEN

14 FEB 20

10-1P1

Eff 27 Feb

LVIV, UKRAINE

AIRPORT BRIEFING

2. ARRIVAL

2.1. CONTINUOUS DESCENT OPERATIONS

CDO are authorized only if there is no system degradation that may affect a GNSS or ILS operation.

ATC will issue further descent instruction prior to the CDO flight reaching 700m (2300') to prevent leveling off.

MAX IAS 220 KT at 20 track miles from touchdown.

Minimum levels must be adhered to unless cancelled by ATC.

2.2. CAT II OPERATIONS

RWYs 13/31 are approved for CAT II operations, special aircrew and ACFT certification required.

UKLL/LWO LVIV INTL



LVIV, UKRAINE

16 NOV 18 **10-1R**

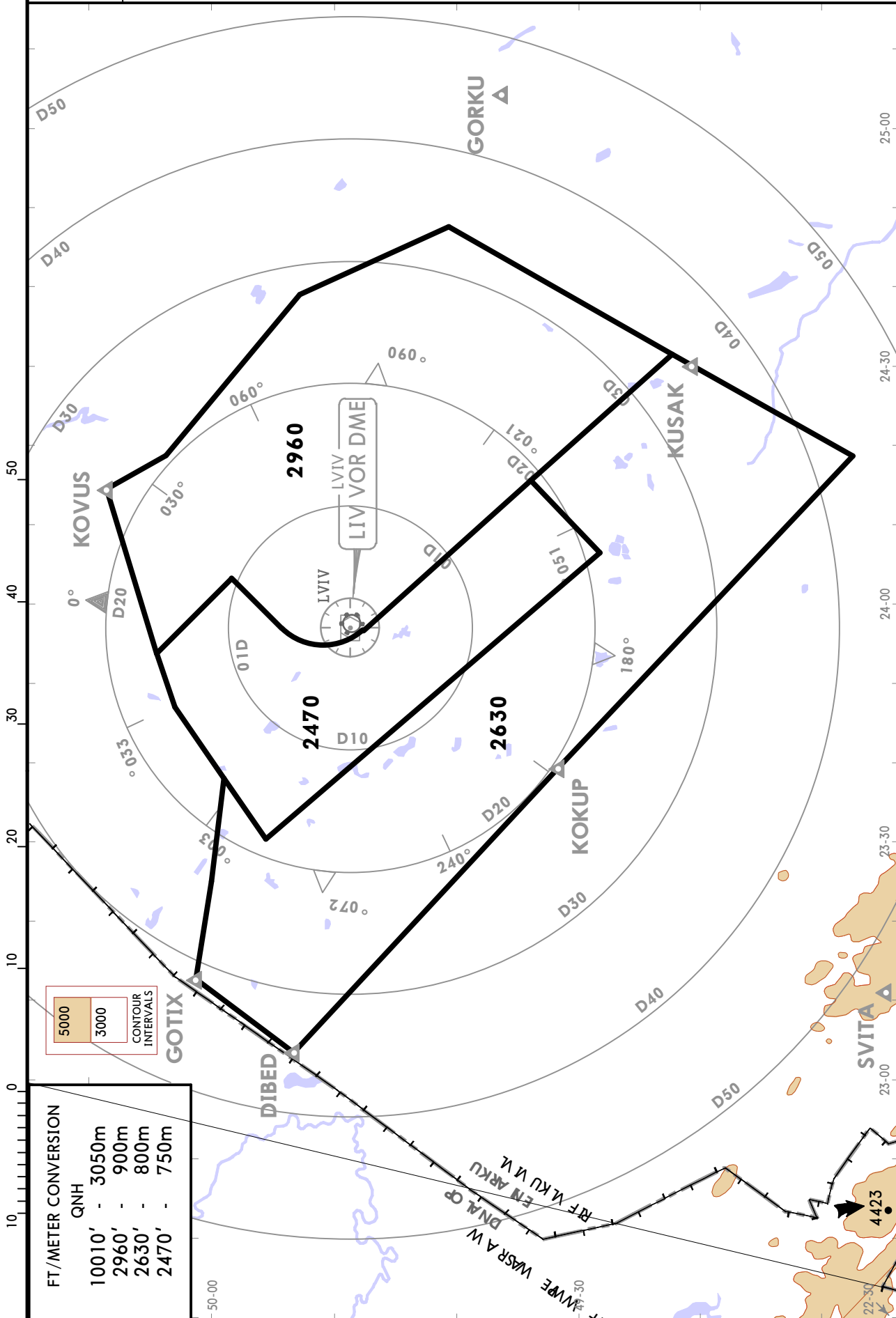
RADAR MINIMUM ALTITUDES

Apt Elev
1077

Alt Set: hPa (MM on request)

Trans level: By ATC Trans alt: 10010

1. This chart may only be used for cross-checking of altitudes assigned while under RADAR control.
2. Minimum Radar Vectoring Altitudes are safe if the temperature at the surface is +12°C or above. For lower temperatures, corrected minimum levels will be provided by ATC.



UKLL/LWO
LVIV INTL

JEPPESEN

LVIV, UKRAINE

16 NOV 18 (10-2)

RNAV STAR

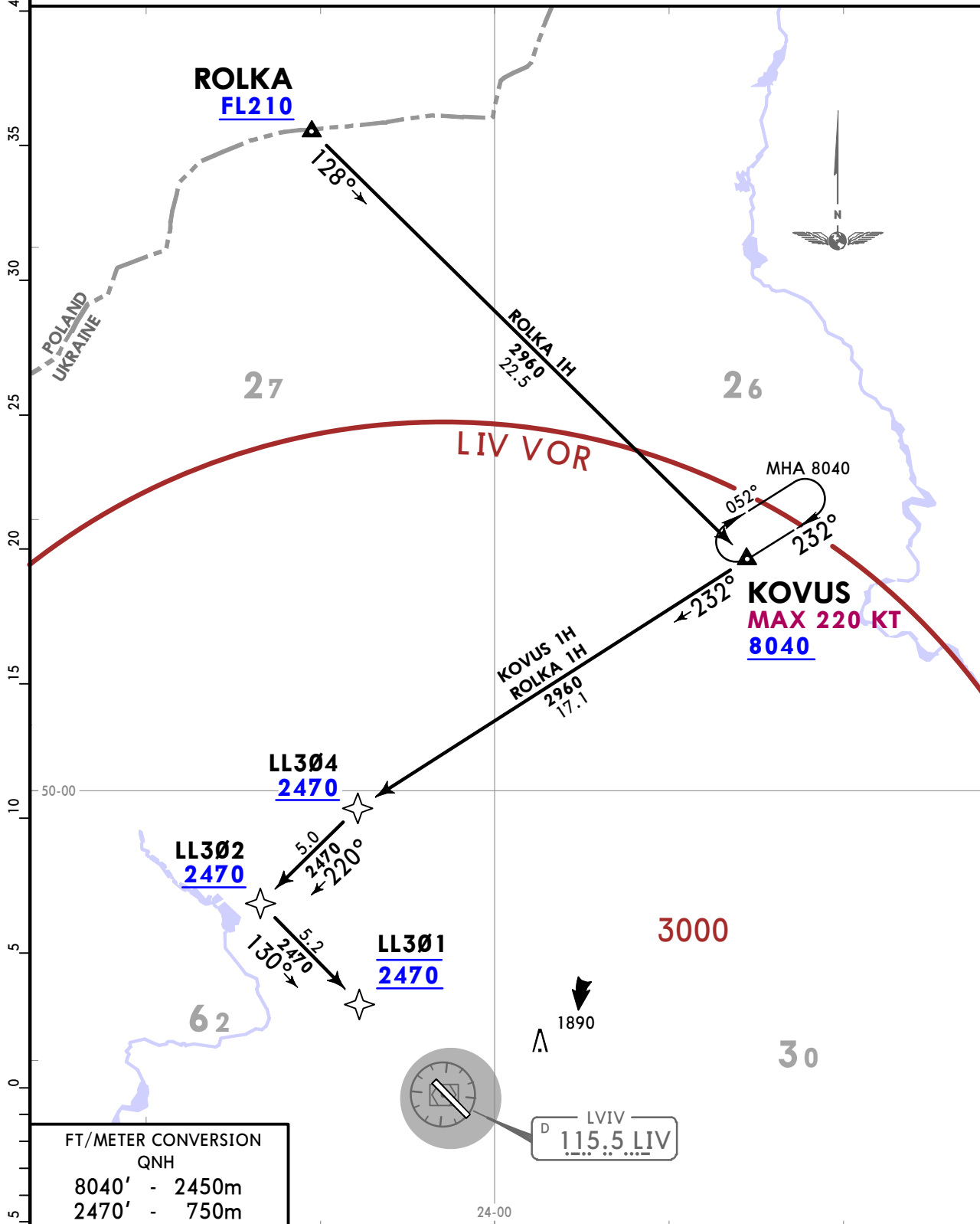
ATIS
128.625
(Russian
122.925)

Apt Elev
1077

Alt Set: hPa Trans level: By ATC
1. RNAV 1 (GNSS).
2. RNAV 1 (P-RNAV) approval required otherwise advise ATC.
3. Speed restrictions are always MANDATORY unless cancelled by ATC.
4. Altitudes will be assigned by ATC.

KOVUS 1H [KOVU1H], ROLKA 1H [ROLK1H]
RWY 13 RNAV ARRIVALS
BY ATC

SPEED: MAX 220 KT FROM KOVUS TO LL301



FT/METER CONVERSION QNH	
8040'	- 2450m
2470'	- 750m

D LVIV
115.5 LIV

STAR	ROUTING
KOVUS 1H	KOVUS (K220-; 8040+) - LL304 (2470+) - LL302 (2470+) - LL301 (2470).
ROLKA 1H	ROLKA (FL210+) - KOVUS (K220-; 8040+) - LL304 (2470+) - LL302 (2470+) - LL301 (2470).

UKLL/LWO
LVIV INTL

JEPPESSEN
16 NOV 18 (10-2A)

LVIV, UKRAINE
RNAV STAR

ATIS
128.625
(Russian
122.925)

Apt Elev
1077

- Alt Set: hPa Trans level: By ATC
1. RNAV 1 (GNSS).
 2. RNAV 1 (P-RNAV) approval required otherwise advise ATC.
 3. Speed restrictions are always MANDATORY unless cancelled by ATC.
 4. Altitudes will be assigned by ATC.
 5. On downwind EXPECT RADAR vectors to final.

KOVUS 1J [KOVU1J], ROLKA 1J [ROLK1J]

RWY 31 RNAV ARRIVALS

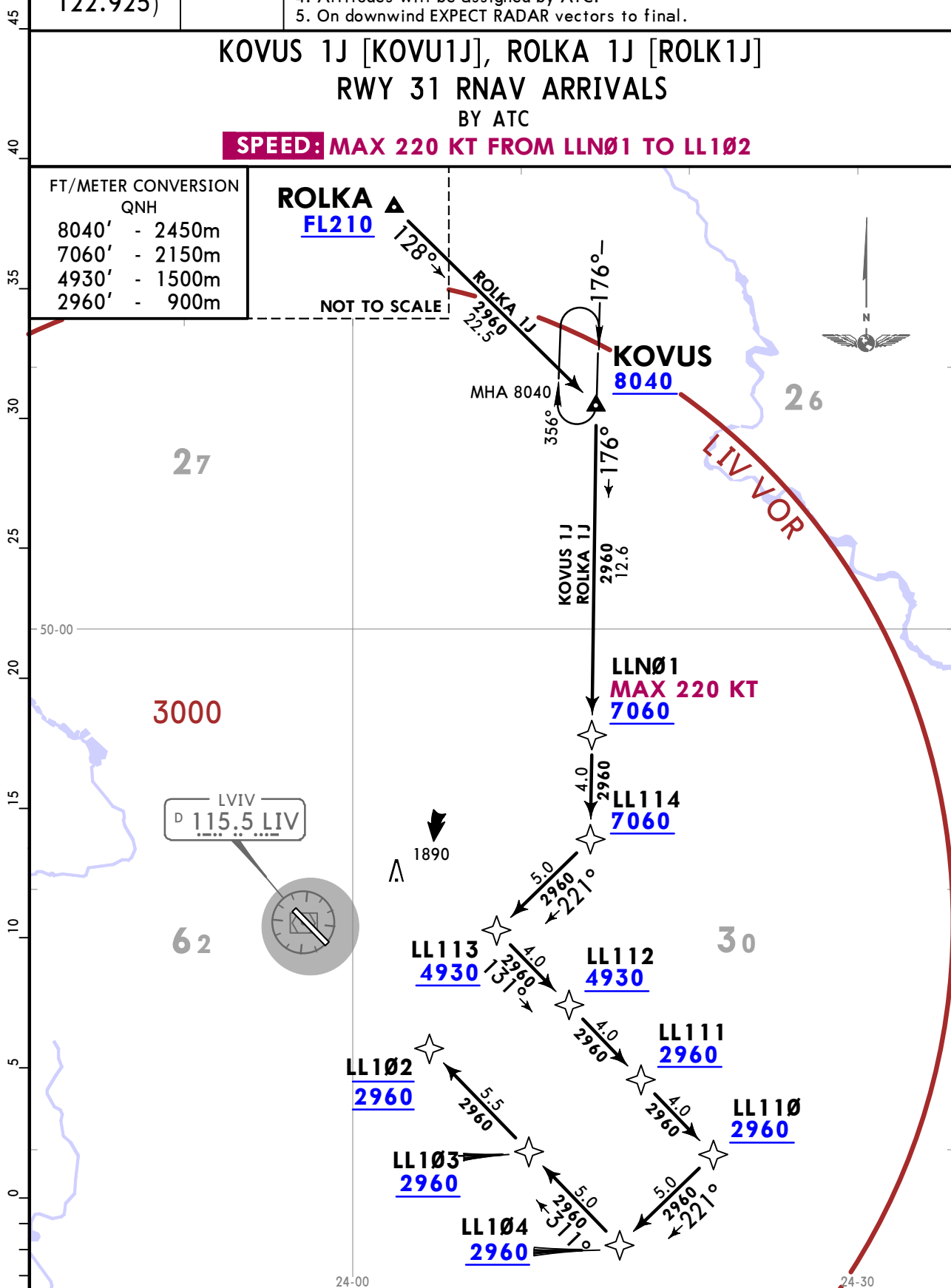
BY ATC

SPEED: MAX 220 KT FROM LLNØ1 TO LL1Ø2

FT/METER CONVERSION	
QNH	
8040'	- 2450m
7060'	- 2150m
4930'	- 1500m
2960'	- 900m

ROLKA
FL210

NOT TO SCALE

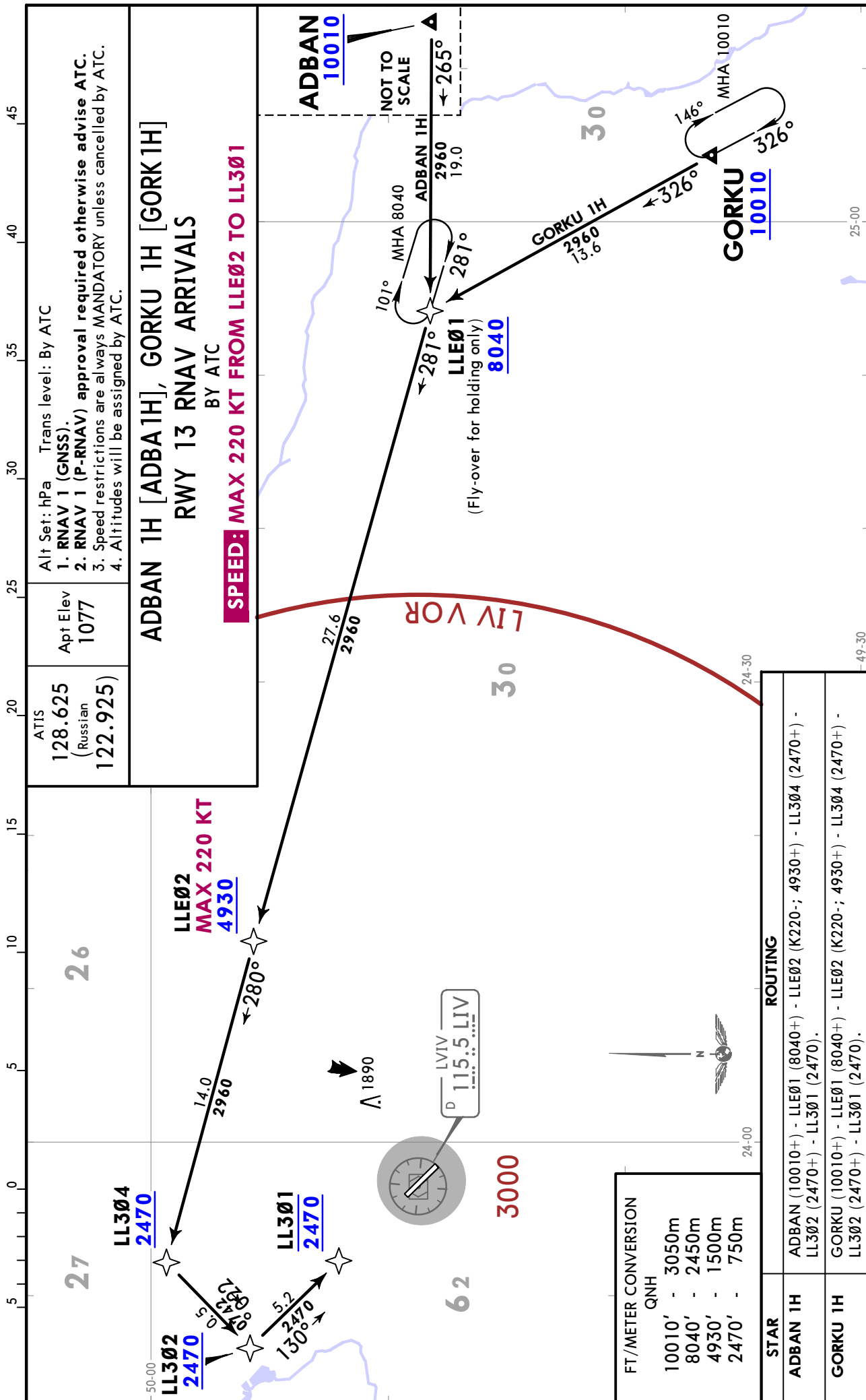


STAR	ROUTING
KOVUS 1J	KOVUS (8040+) - LLNØ1 (K220-; 7060+) - LL114 (7060+) - LL113 (4930+) - LL112 (4930+) - LL111 (2960+) - LL11Ø (2960+) - LL1Ø4 (2960+) - LL1Ø3 (2960+) - LL1Ø2 (2960).
ROLKA 1J	ROLKA (FL210+) - KOVUS (8040+) - LLNØ1 (K220-; 7060+) - LL114 (7060+) - LL113 (4930+) - LL112 (4930+) - LL111 (2960+) - LL11Ø (2960+) - LL1Ø4 (2960+) - LL1Ø3 (2960+) - LL1Ø2 (2960).

UKLL/LWO
LVIV INTL

JEPPESSEN
16 NOV 18 10-2B

LVIV, UKRAINE
RNAV STAR



ATIS
128.625
(Russian)
122.925)

Alt Set: hPa Trans level: By ATC
1. RNAV 1 (GNSS).
2. RNAV 1 (P-RNAV) approval required otherwise advise ATC.
3. Speed restrictions are always MANDATORY unless cancelled by ATC.
4. Altitudes will be assigned by ATC.

ADBAN 1H [ADBA1H], GORKU 1H [GORK1H]
RWY 13 RNAV ARRIVALS
BY ATC

SPEED: MAX 220 KT FROM LLE02 TO LL301

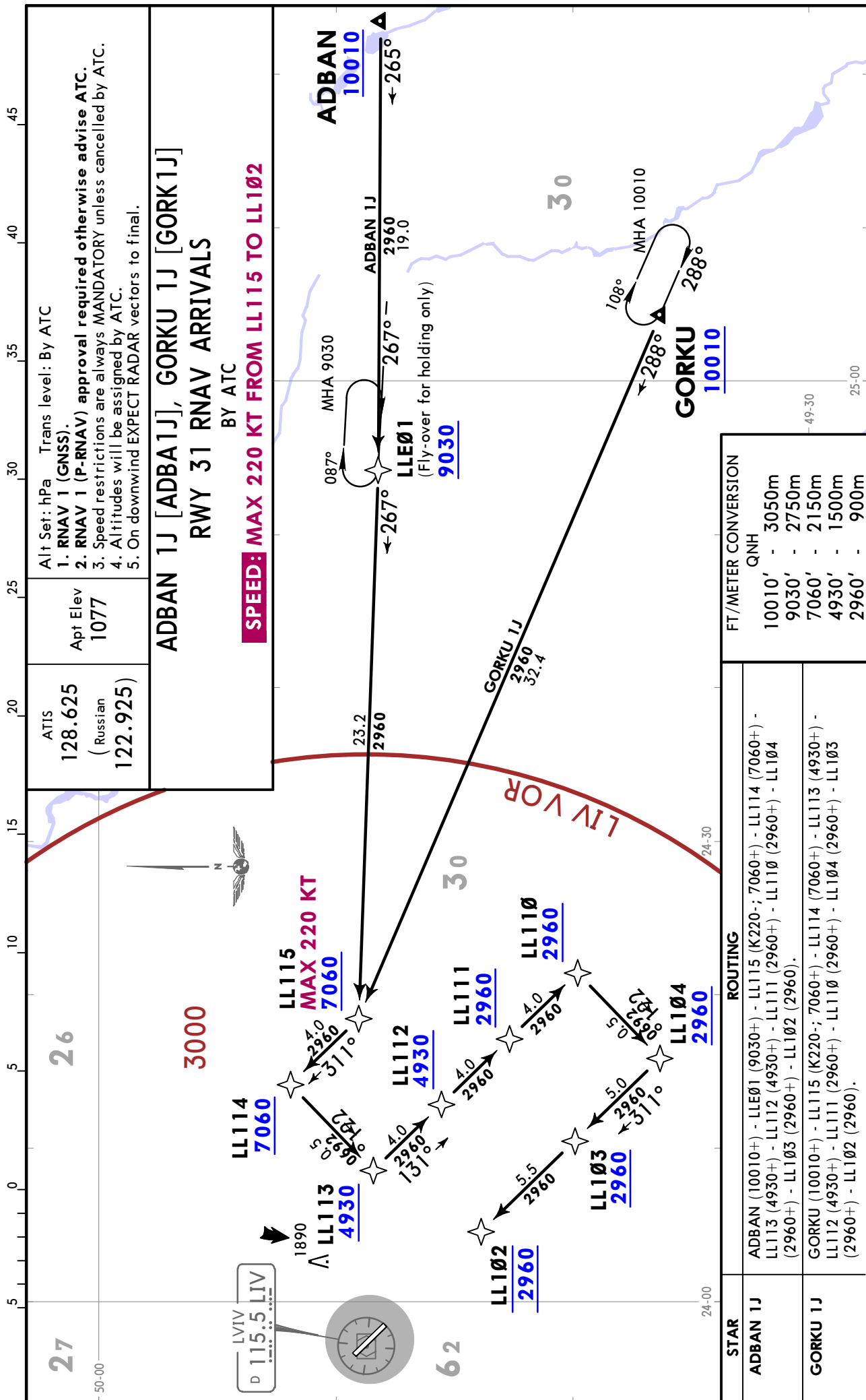
FT/METER CONVERSION	
QNH	
10010'	3050m
8040'	2450m
4930'	1500m
2470'	750m

STAR	ROUTING
ADBAN 1H	ADBAN (10010+) - LLE01 (8040+) - LLE02 (K220-; 4930+) - LL304 (2470+) - LL302 (2470+) - LL301 (2470).
GORKU 1H	GORKU (10010+) - LLE01 (8040+) - LLE02 (K220-; 4930+) - LL304 (2470+) - LL302 (2470+) - LL301 (2470).

UKLL/LWO
LVIV INTL


JEPPESSEN
16 NOV 18 10-2C

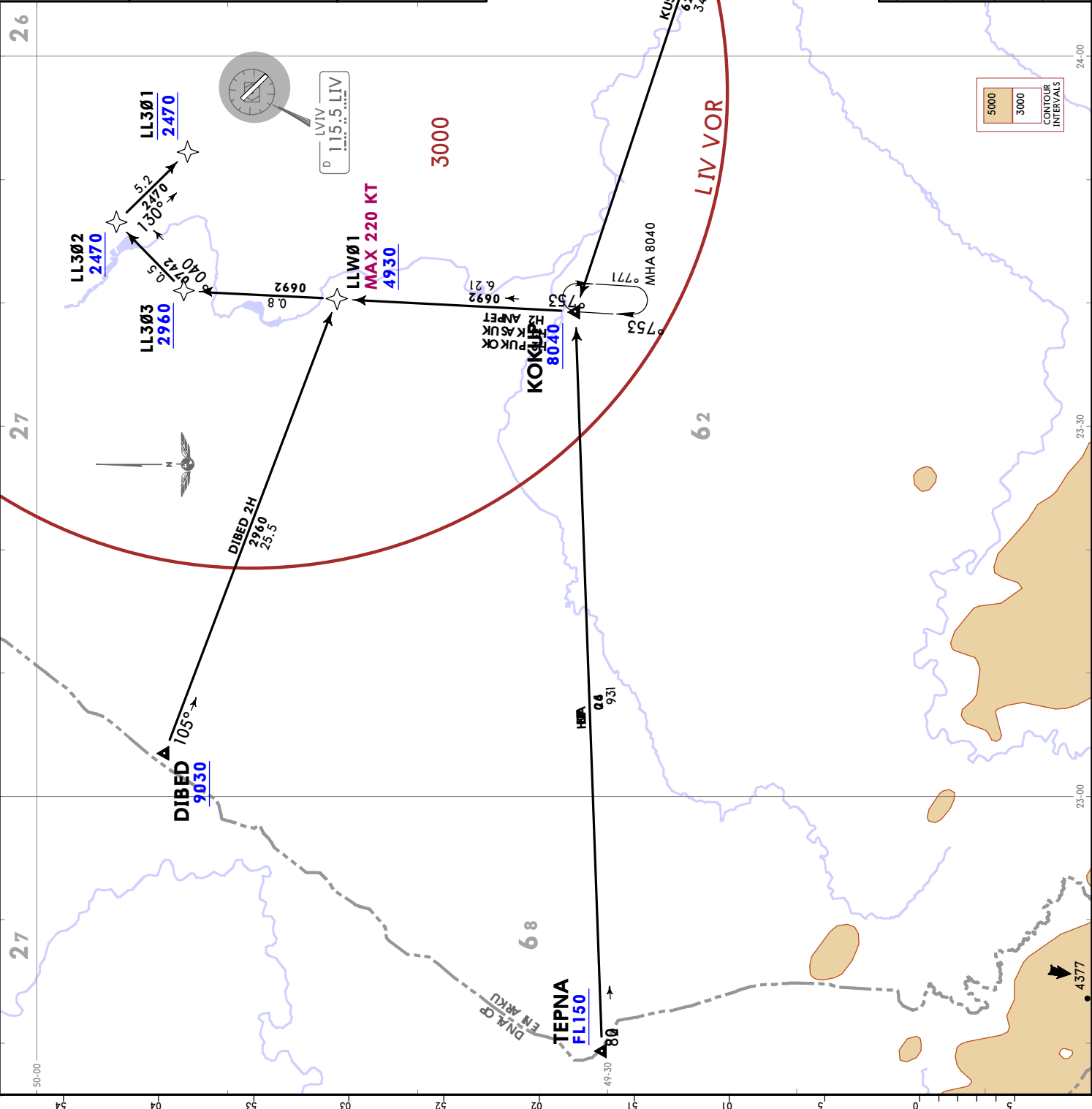
LVIV, UKRAINE
RNAV STAR



Alt Set: hPa Trans level: By ATC
 1. RNAV 1 (GNSS).
 2. RNAV 1 (P-RNAV) approval required otherwise advise ATC.
 3. Speed restrictions are always MANDATORY unless cancelled by ATC.
 4. Altitudes will be assigned by ATC.

DIBED 2H [DIBE2H]
KOKUP 2H [KOKU2H]
KUSAK 2H [KUSA2H]
TEPNA 2H [TEPN2H]
RWY 13 RNAV ARRIVALS
 BY ATC
SPEED: MAX 220 KT FROM LLW01 TO LL301

HOLDING OVER KUSAK
 100°  284°
 FT/METER CONVERSION
 QNH
 9030' - 2750m
 8040' - 2450m
 4930' - 1500m
 2960' - 900m
 2470' - 750m



STAR	ROUTING
DIBED 2H	DIBED (9030+) - LLW01 (K220+; 4930+) - LL303 (2960+) - LL302 (2470+) - LL301 (2470).
KOKUP 2H	KOKUP (8040+) - LLW01 (K220+; 4930+) - LL303 (2960+) - LL302 (2470+) - LL301 (2470).
KUSAK 2H	KUSAK (8040+) - KOKUP (8040+) - LLW01 (K220+; 4930+) - LL303 (2960+) - LL302 (2470+) - LL301 (2470).
TEPNA 2H	TEPNA (4377+) - KOKUP (8040+) - LLW01 (K220+; 4930+) - LL303 (2960+) - LL302 (2470+) - LL301 (2470).

LVIV, UKRAINE
RNAV STAR

JEPESEN
 16 NOV 18 (10-2E)

UKLL/LWO
 LVIV INTL

Alt Set: hPa Trans level: By ATC

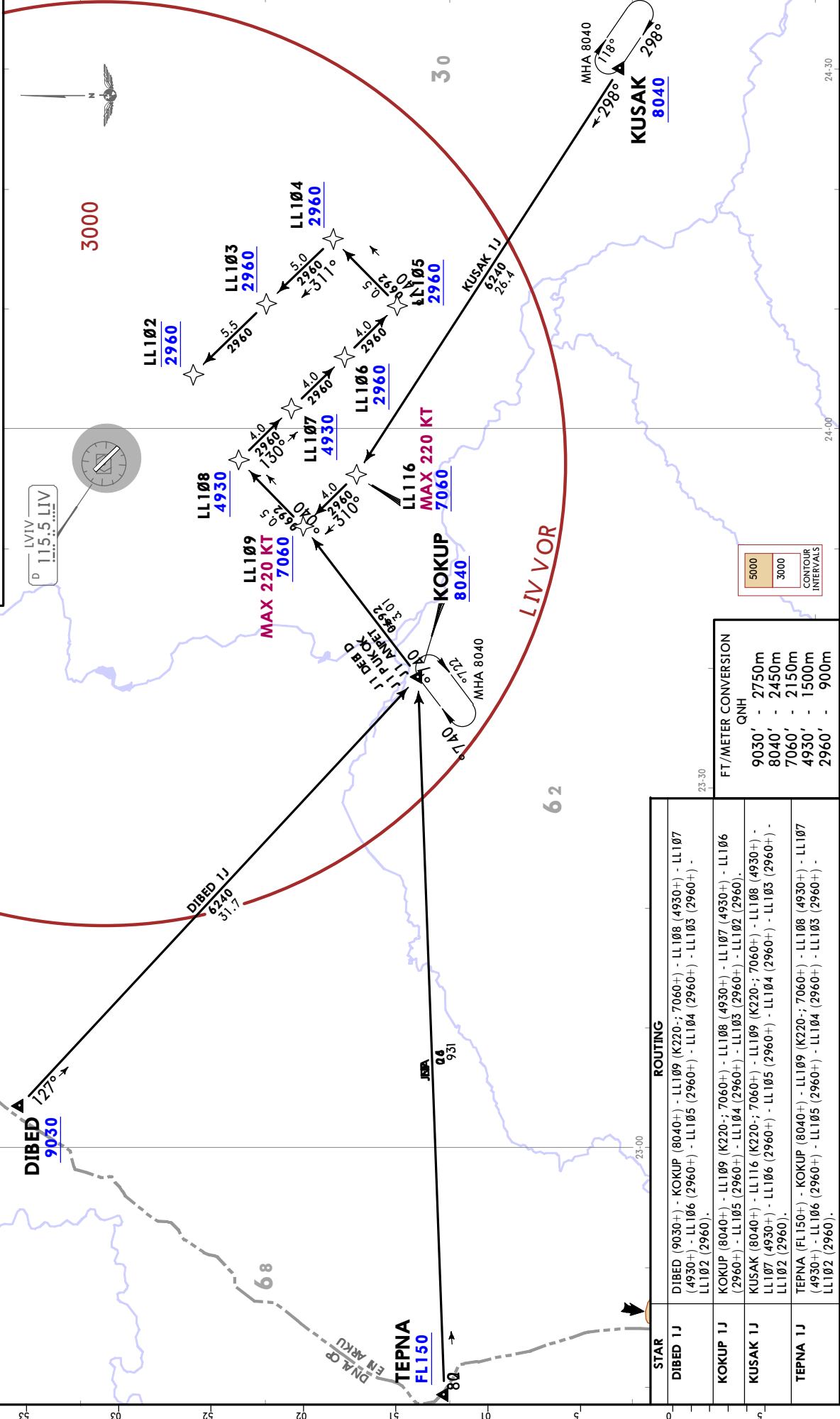
1. RNAV 1 (GNSS).
2. RNAV 1 (P-RNAV) approval required otherwise advise ATC.
3. Speed restrictions are always MANDATORY unless cancelled by ATC.
4. Altitudes will be assigned by ATC.
5. On downwind EXPECT RADAR vectors to final.

Apt Elev 1077

ATIS 128.625 (Russian) 122.925

**DIBED 1J [DIBE1J], KOKUP 1J [KOKU1J]
 KUSAK 1J [KUSA1J], TEPNA 1J [TEPN1J]
 RWY 31 RNAV ARRIVALS**
 BY ATC

SPEED: MAX 220 KT FROM LL109 TO LL102



FT./METER CONVERSION QNH

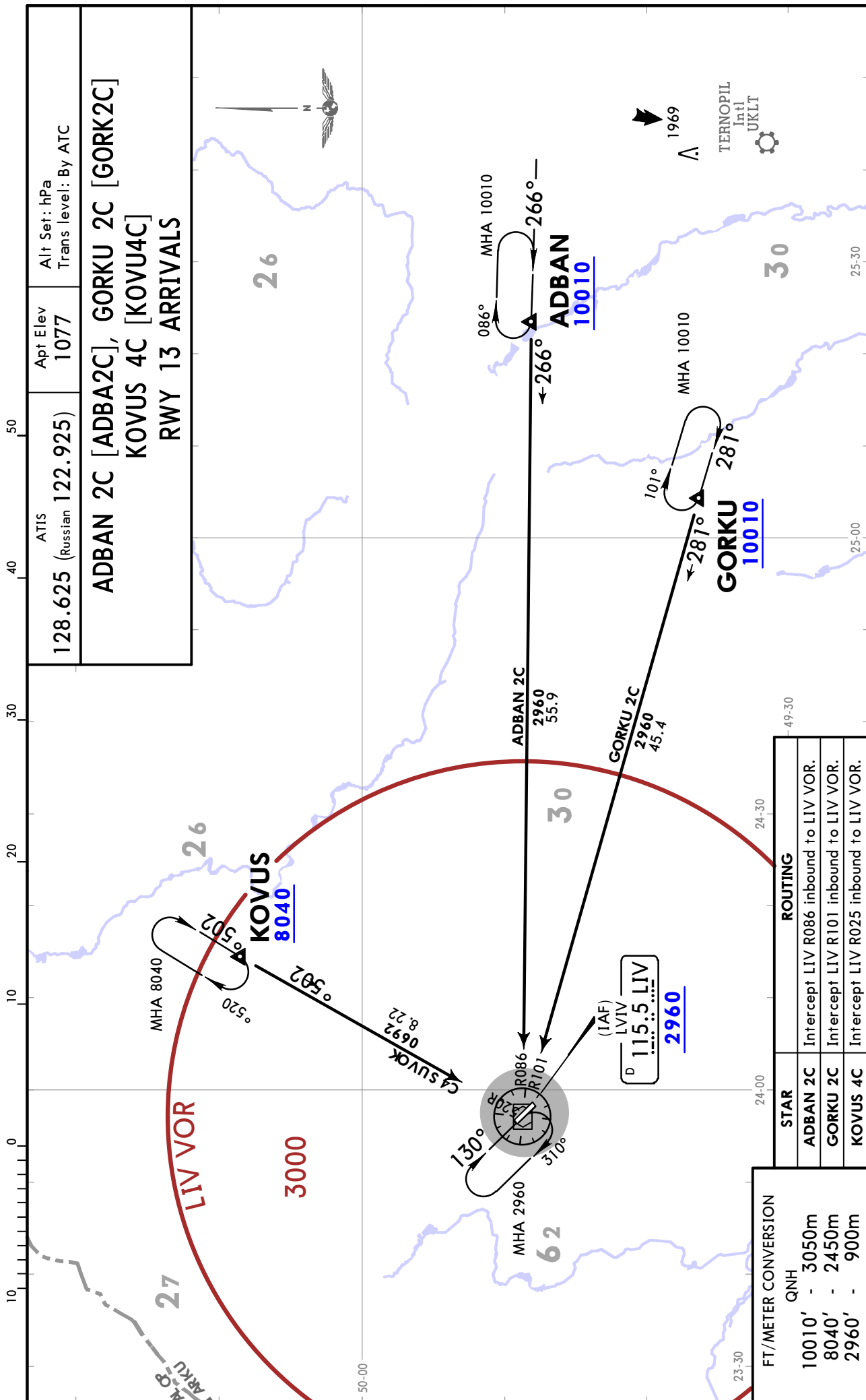
9030'	-	2750m
8040'	-	2450m
7060'	-	2150m
4930'	-	1500m
2960'	-	900m

STAR	ROUTING
DIBED 1J	DIBED (9030+) - KOKUP (8040+) - LL109 (K220+; 7060+) - LL108 (4930+) - LL107 (4930+) - LL106 (2960+) - LL105 (2960+) - LL104 (2960+) - LL103 (2960+) - LL102 (2960).
KOKUP 1J	KOKUP (8040+) - LL109 (K220+; 7060+) - LL108 (4930+) - LL107 (4930+) - LL106 (2960+) - LL105 (2960+) - LL104 (2960+) - LL103 (2960+) - LL102 (2960).
KUSAK 1J	KUSAK (8040+) - LL116 (K220+; 7060+) - LL109 (K220+; 7060+) - LL108 (4930+) - LL107 (4930+) - LL106 (2960+) - LL105 (2960+) - LL104 (2960+) - LL103 (2960+) - LL102 (2960).
TEPNA 1J	TEPNA (FL150+) - KOKUP (8040+) - LL109 (K220+; 7060+) - LL108 (4930+) - LL107 (4930+) - LL106 (2960+) - LL105 (2960+) - LL104 (2960+) - LL103 (2960+) - LL102 (2960).

UKLL/LWO
LVIV INTL

16 NOV 18 **10-2F**

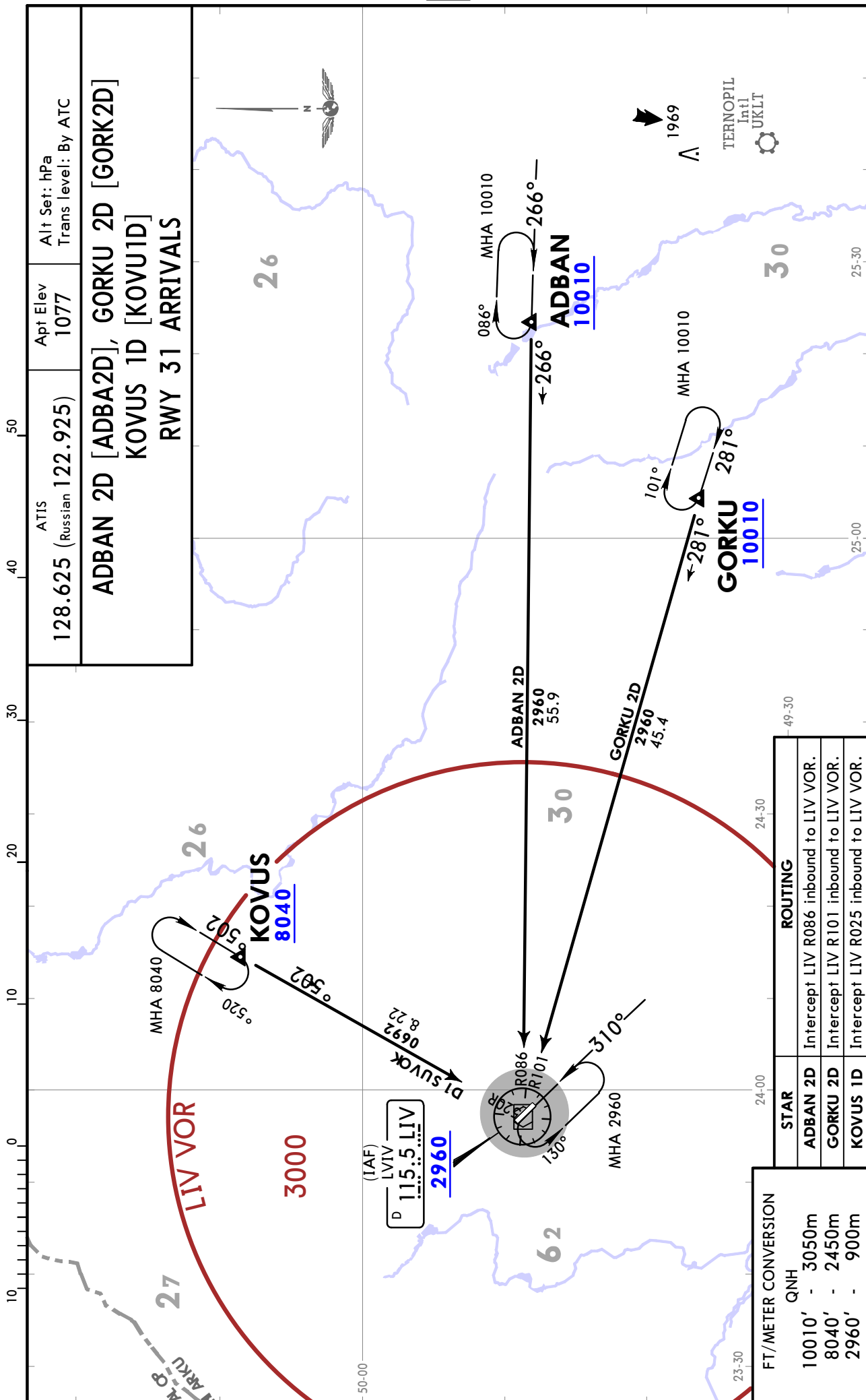
LVIV, UKRAINE
STAR



UKLL/LWO
LVIV INTL

JEPPESSEN
16 NOV 18 (10-2G)

LVIV, UKRAINE
STAR



UKLL/LWO
LVIV INTL

JEPPESEN

LVIV, UKRAINE

16 NOV 18 (10-2H)

STAR

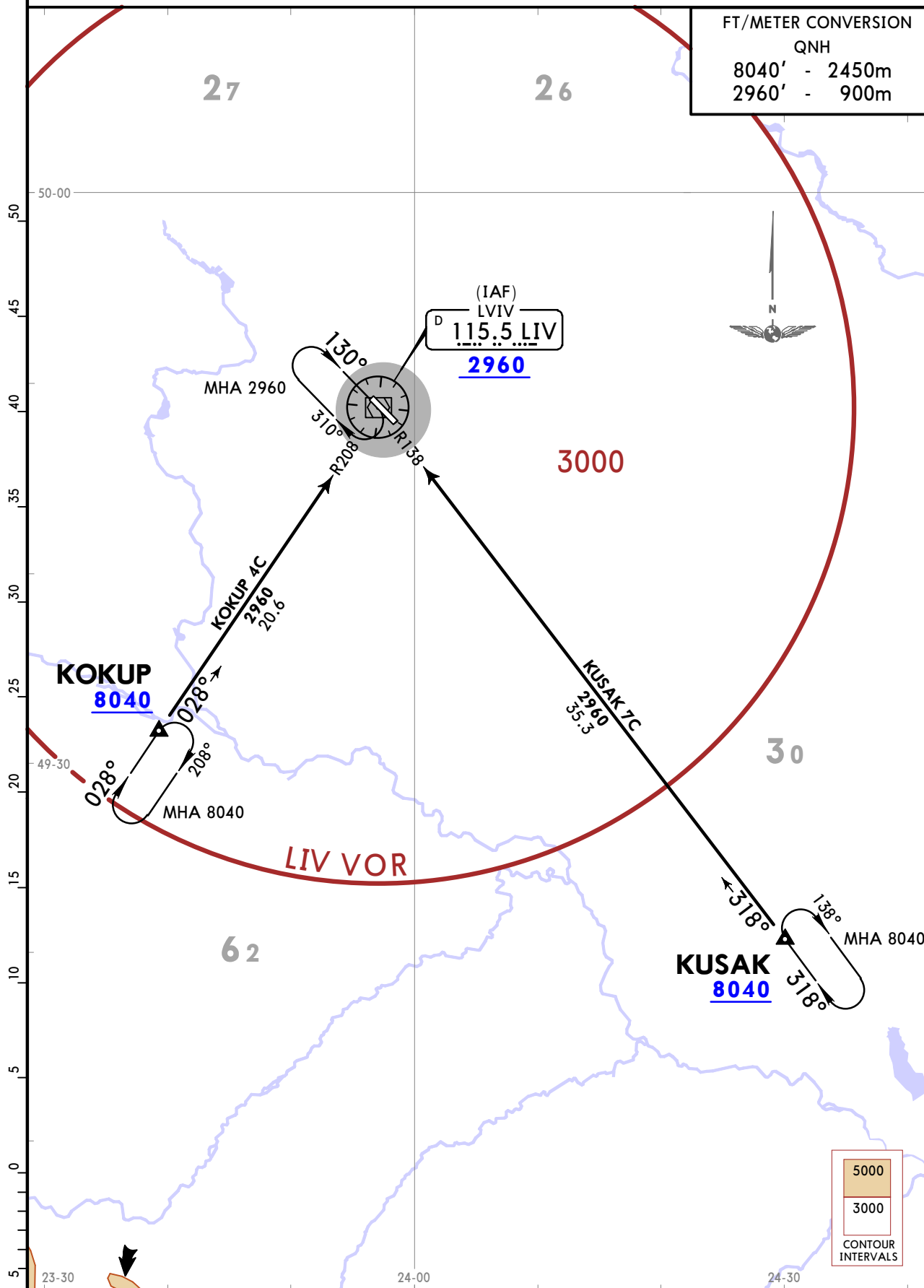
ATIS
128.625 (Russian 122.925)

Apt Elev
1077

Alt Set: hPa
Trans level: By ATC

KOKUP 4C [KOKU4C], KUSAK 7C [KUSA7C]
RWY 13 ARRIVALS

FT/METER CONVERSION
QNH
8040' - 2450m
2960' - 900m



STAR	ROUTING
KOKUP 4C	Intercept LIV R208 inbound to LIV VOR.
KUSAK 7C	Intercept LIV R138 inbound to LIV VOR.

CHANGES: ATIS, location name, airport name, LIV VOR name.

© JEPPESEN, 2018. ALL RIGHTS RESERVED.

UKLL/LWO
LVIV INTL

JEPPESEN

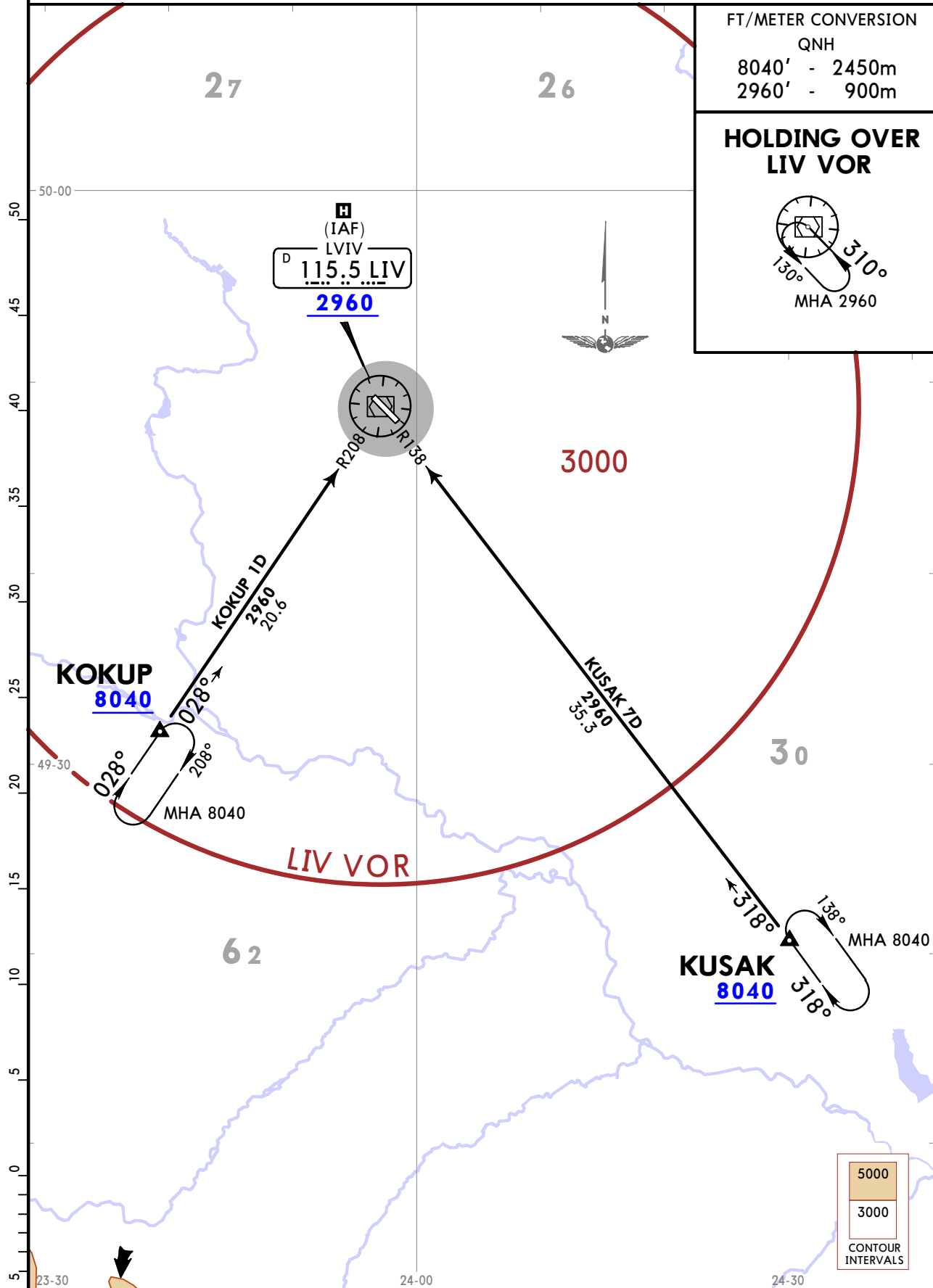
LVIV, UKRAINE

16 NOV 18 (10-2J)

STAR

ATIS 128.625 (Russian 122.925)	Apt Elev 1077	Alt Set: hPa Trans level: By ATC
-----------------------------------	------------------	-------------------------------------

KOKUP 1D [KOKU1D], KUSAK 7D [KUSA7D]
RWY 31 ARRIVALS



FT/METER CONVERSION
QNH
8040' - 2450m
2960' - 900m

HOLDING OVER LIV VOR

MHA 2960

STAR	ROUTING
KOKUP 1D	Intercept LIV R208 inbound to LIV VOR.
KUSAK 7D	Intercept LIV R138 inbound to LIV VOR.

UKLL/LWO
LVIV INTL

JEPPESEN

LVIV, UKRAINE

16 NOV 18 (10-2K)

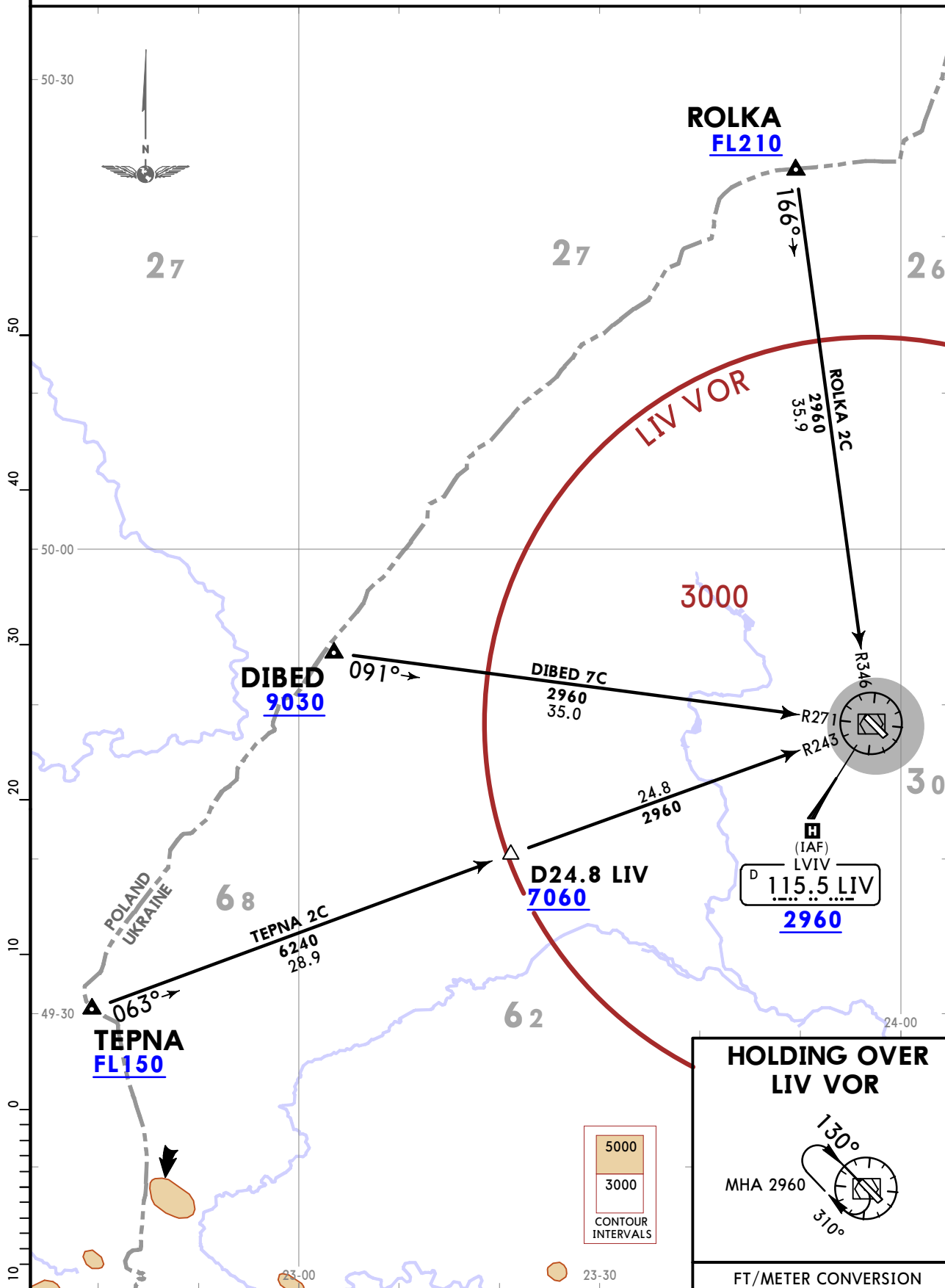
STAR

ATIS
128.625 (Russian 122.925)

Apt Elev
1077

Alt Set: hPa
Trans level: By ATC

DIBED 7C [DIBE7C], ROLKA 2C [ROLK2C], TEPNA 2C [TEPN2C]
RWY 13 ARRIVALS



HOLDING OVER LIV VOR

MHA 2960

FT/METER CONVERSION

QNH

9030'	- 2750m
7060'	- 2150m
2960'	- 900m

STAR	ROUTING
DIBED 7C	Intercept LIV R271 inbound to LIV VOR.
ROLKA 2C	Intercept LIV R346 inbound to LIV VOR.
TEPNA 2C	Intercept LIV R243 inbound to LIV VOR.

UKLL/LWO
LVIV INTL

JEPPESEN

LVIV, UKRAINE

16 NOV 18 (10-2L)

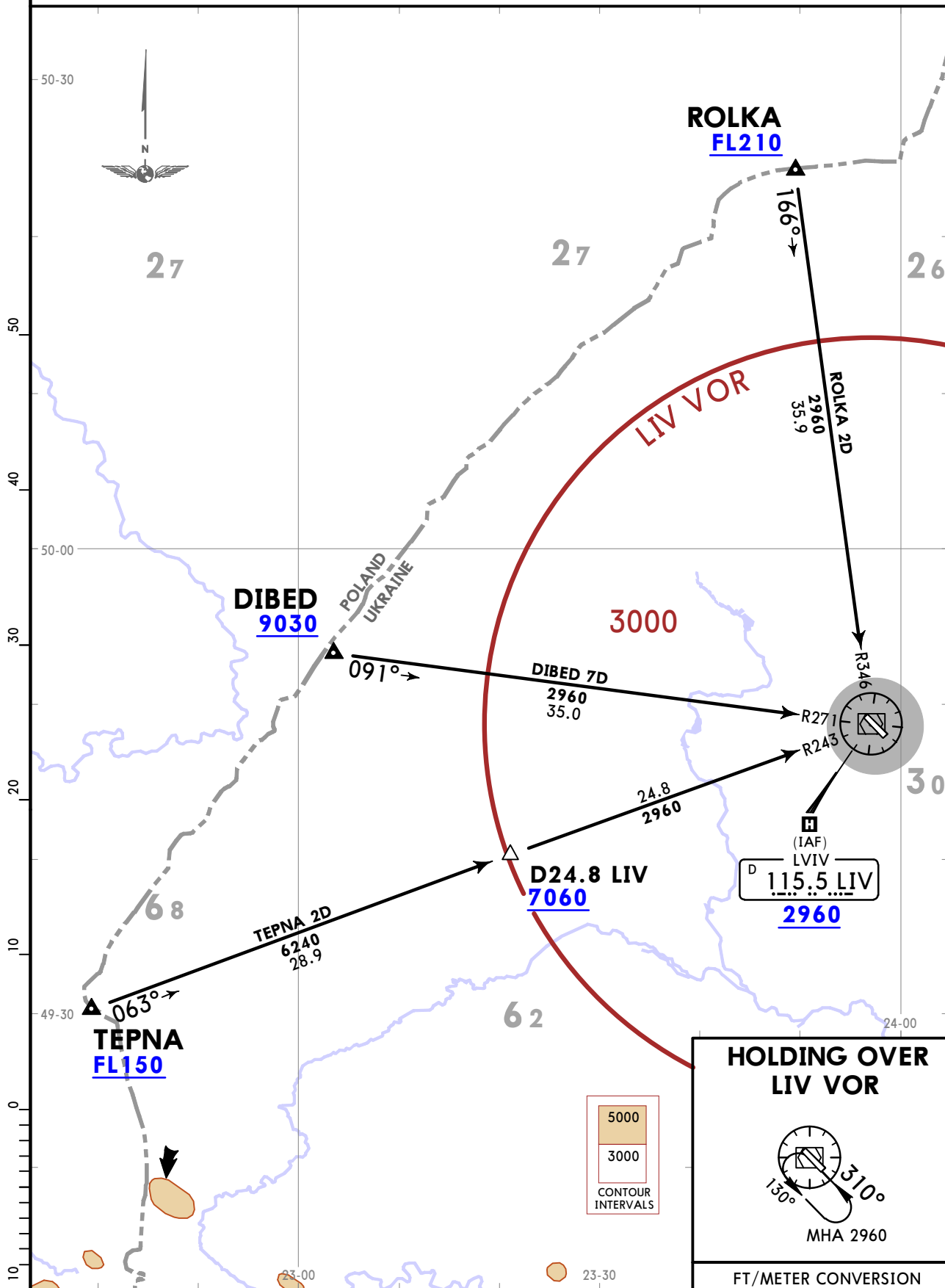
STAR

ATIS
128.625 (Russian 122.925)

Apt Elev
1077

Alt Set: hPa
Trans level: By ATC

DIBED 7D [DIBE7D], ROLKA 2D [ROLK2D], TEPNA 2D [TEPN2D]
RWY 31 ARRIVALS



STAR	ROUTING
DIBED 7D	Intercept LIV R271 inbound to LIV VOR.
ROLKA 2D	Intercept LIV R346 inbound to LIV VOR.
TEPNA 2D	Intercept LIV R243 inbound to LIV VOR.

HOLDING OVER LIV VOR

MHA 2960

FT/METER CONVERSION
QNH

9030'	- 2750m
7060'	- 2150m
2960'	- 900m

UKLL/LWO
LVIV INTL

JEPPESEN LVIV, UKRAINE
RNAV SID

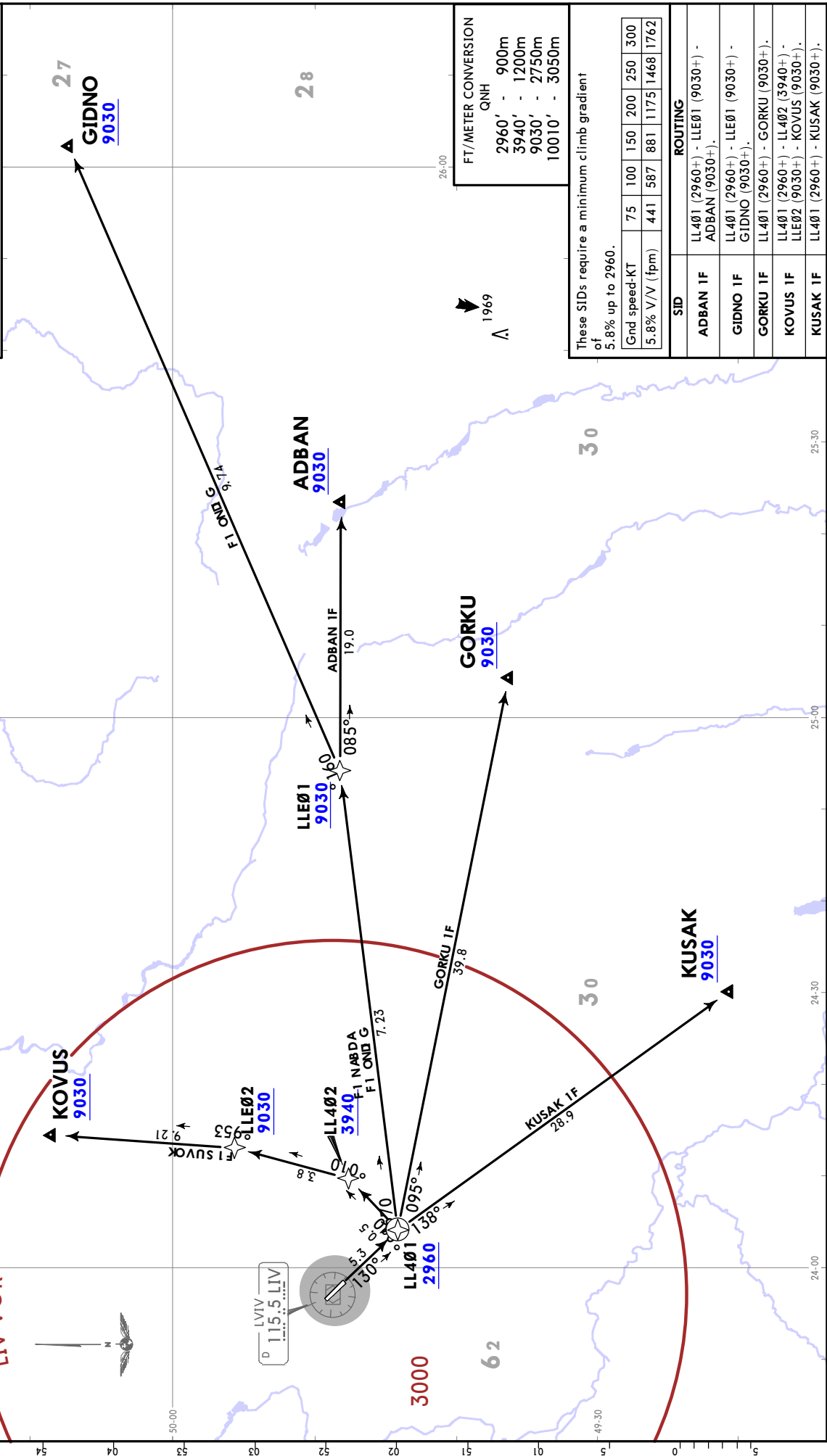
16 NOV 18 10-3

Trans alt: 10010
1. RNAV 1 (GNSS).
2. RNAV 1 (P-RNAV) approval required otherwise advise ATC.
3. If unable to comply departure procedures advise ATC.

Apt Elev
1077

ADBAN 1F [ADBA 1F]
GIDNO 1F [GIDN 1F]
GORKU 1F [GORK 1F]
KOVUS 1F [KOVU 1F]
KUSAK 1F [KUSA 1F]

RWY 13 RNAV DEPARTURES



FT/METER CONVERSION
QNH

2960'	-	900m
3940'	-	1200m
9030'	-	2750m
10010'	-	3050m

These SIDs require a minimum climb gradient of 5.8% up to 2960.

Gnd speed-KT	75	100	150	200	250	300
5.8% V/V (fpm)	441	587	881	1175	1468	1762

SID	ROUTING
ADBAN 1F	LL401 (2960+) - LLE01 (9030+) - ADBAN (9030+)
GIDNO 1F	LL401 (2960+) - LLE01 (9030+) - GIDNO (9030+)
GORKU 1F	LL401 (2960+) - GORKU (9030+)
KOVUS 1F	LL401 (2960+) - LL402 (3940+) - LLE02 (9030+) - KOVUS (9030+)
KUSAK 1F	LL401 (2960+) - KUSAK (9030+)

DNAL OP
ENARKU

UKLL/LWO
LVIV INTL

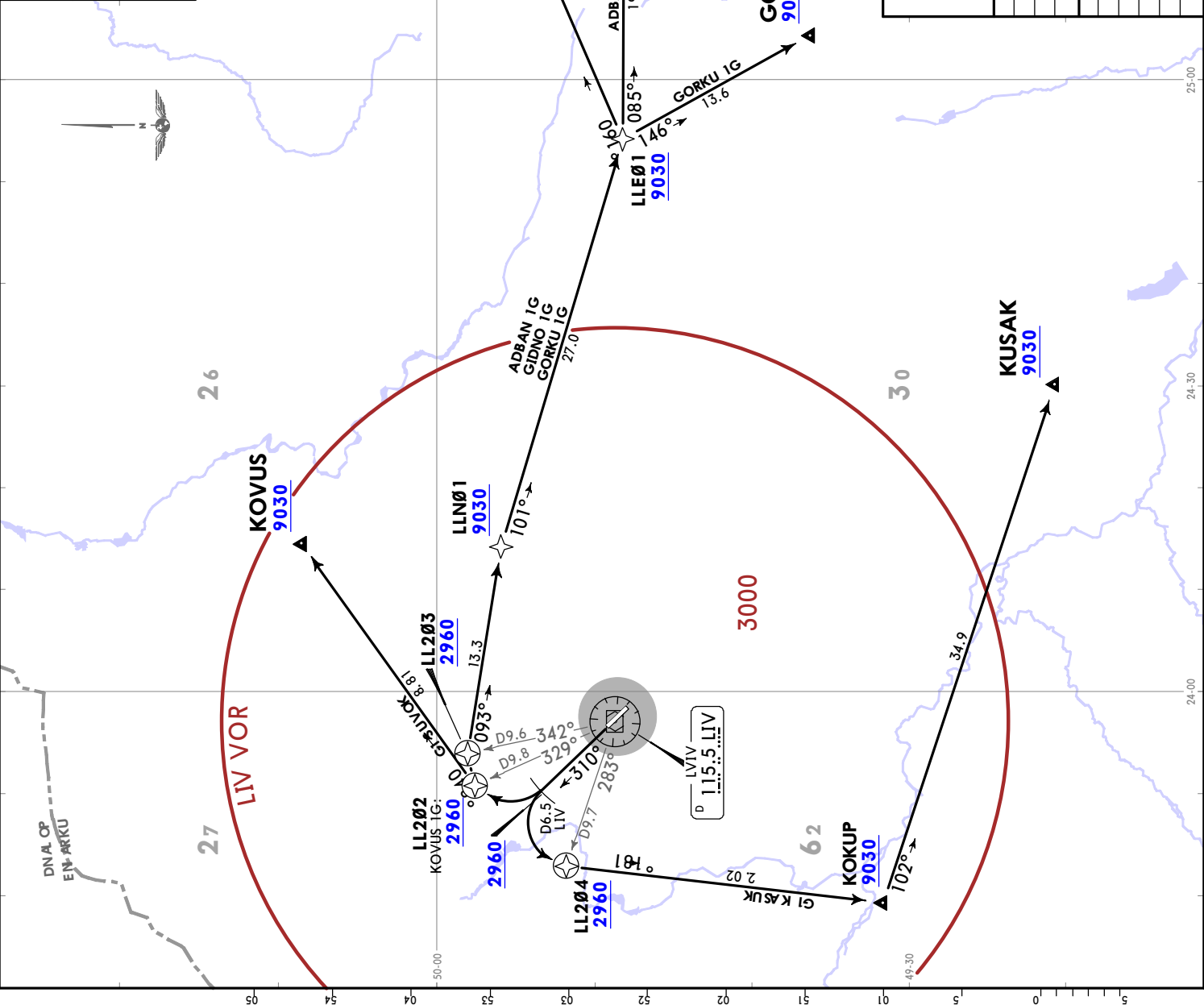
JEPESEN
16 NOV 18 (10-3A)

LVIV, UKRAINE
RNAV SID

Trans alt: 10010
 1. RNAV 1 (GNSS).
 2. RNAV 1 (P-RNAV) approval required otherwise advise ATC.
 3. If unable to comply departure procedures advise ATC.

Apt Elev
1077

**ADBAN 1G [ADBA1G], GIDNO 1G [GIDN1G]
 GORKU 1G [GORK1G], KOVUS 1G [KOVU1G]
 KUSAK 1G [KUSA1G]
 RWY 31 RNAV DEPARTURES**



These SIDs require a minimum climb gradient of 5.2% up to 2960.

Grnd speed-KT	75	100	150	200	250	300
5.2% V/V (fpm)	395	527	790	1053	1316	1580

FT/METER CONVERSION
 QNH
 2960' - 900m
 9030' - 2750m
 10010' - 3050m

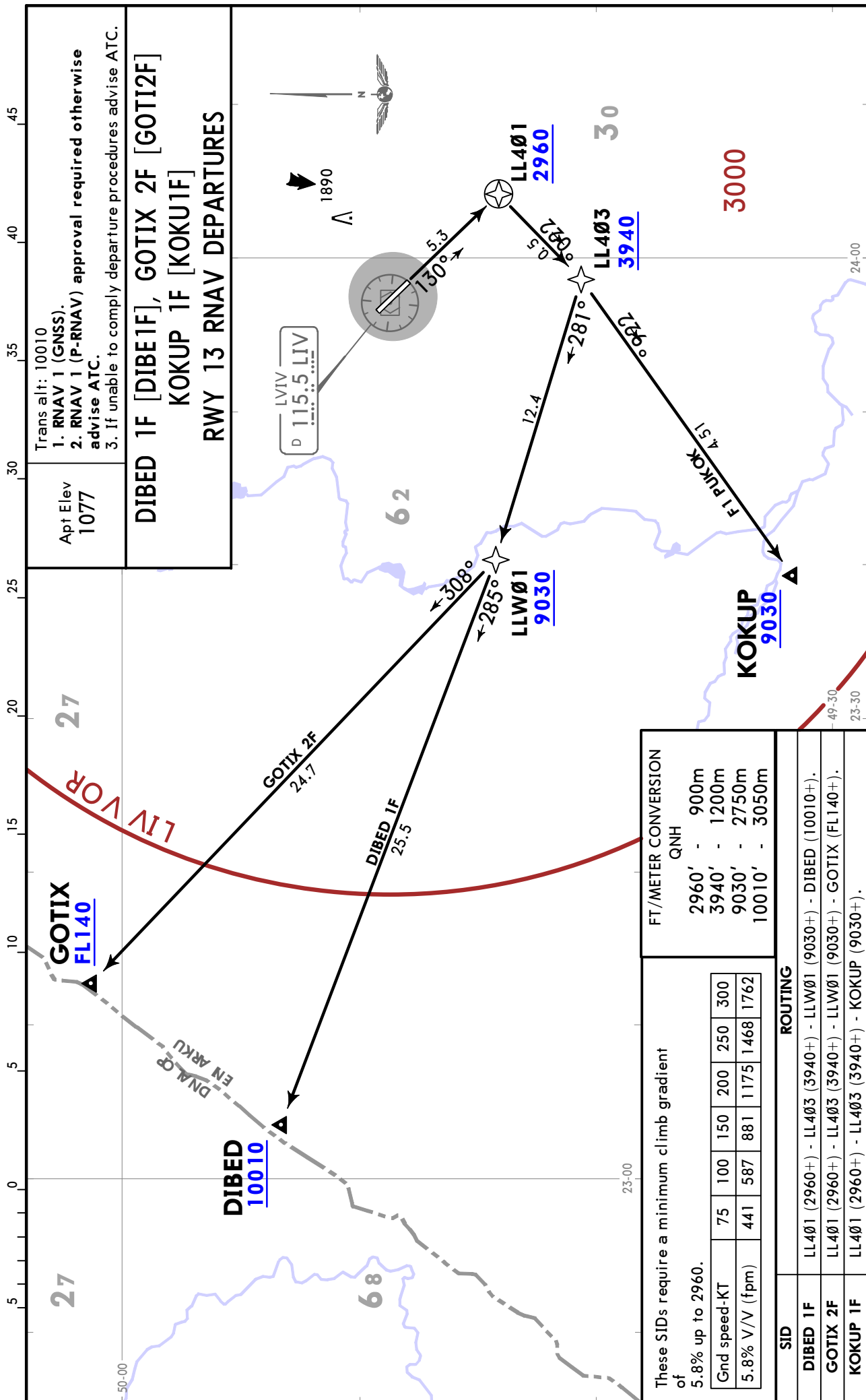
SID	INITIAL CLIMB (CONVENTIONAL)
ADBAN 1G, GIDNO 1G, GORKU 1G	On 310° track to D6.5 LIV, turn RIGHT to LL203.
KOVUS 1G	On 310° track to D6.5 LIV, turn RIGHT to LL202.
KUSAK 1G	On 310° track to D6.5 LIV, turn LEFT to LL204.

SID	ROUTING
ADBAN 1G	LL203 (2960+) - LLN01 (9030+) - LLE01 (9030+) - ADBAN (9030+).
GIDNO 1G	LL203 (2960+) - LLN01 (9030+) - LLE01 (9030+) - GIDNO (9030+).
GORKU 1G	LL203 (2960+) - LLN01 (9030+) - LLE01 (9030+) - GORKU (9030+).
KOVUS 1G	LL202 (2960+) - KOVUS (9030+).
KUSAK 1G	LL204 (2960+) - KOKUP (9030+) - KUSAK (9030+).

UKLL/LWO
LVIV INTL

JEPPESSEN
16 NOV 18 (10-3B)

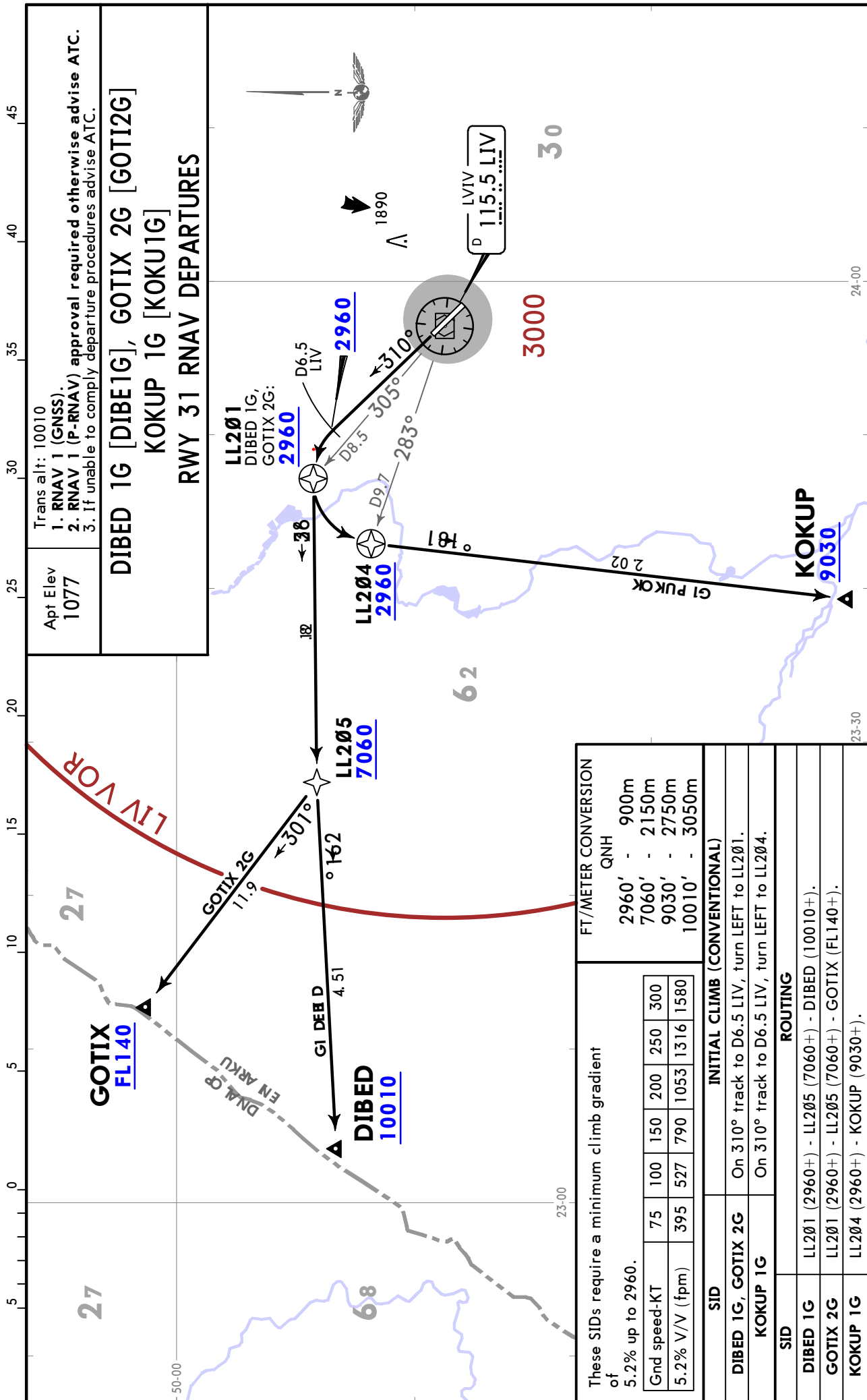
LVIV, UKRAINE
RNAV SID



UKLL/LWO
LVIV INTL

JEPPESSEN
16 NOV 18 (10-3C)

LVIV, UKRAINE
RNAV SID



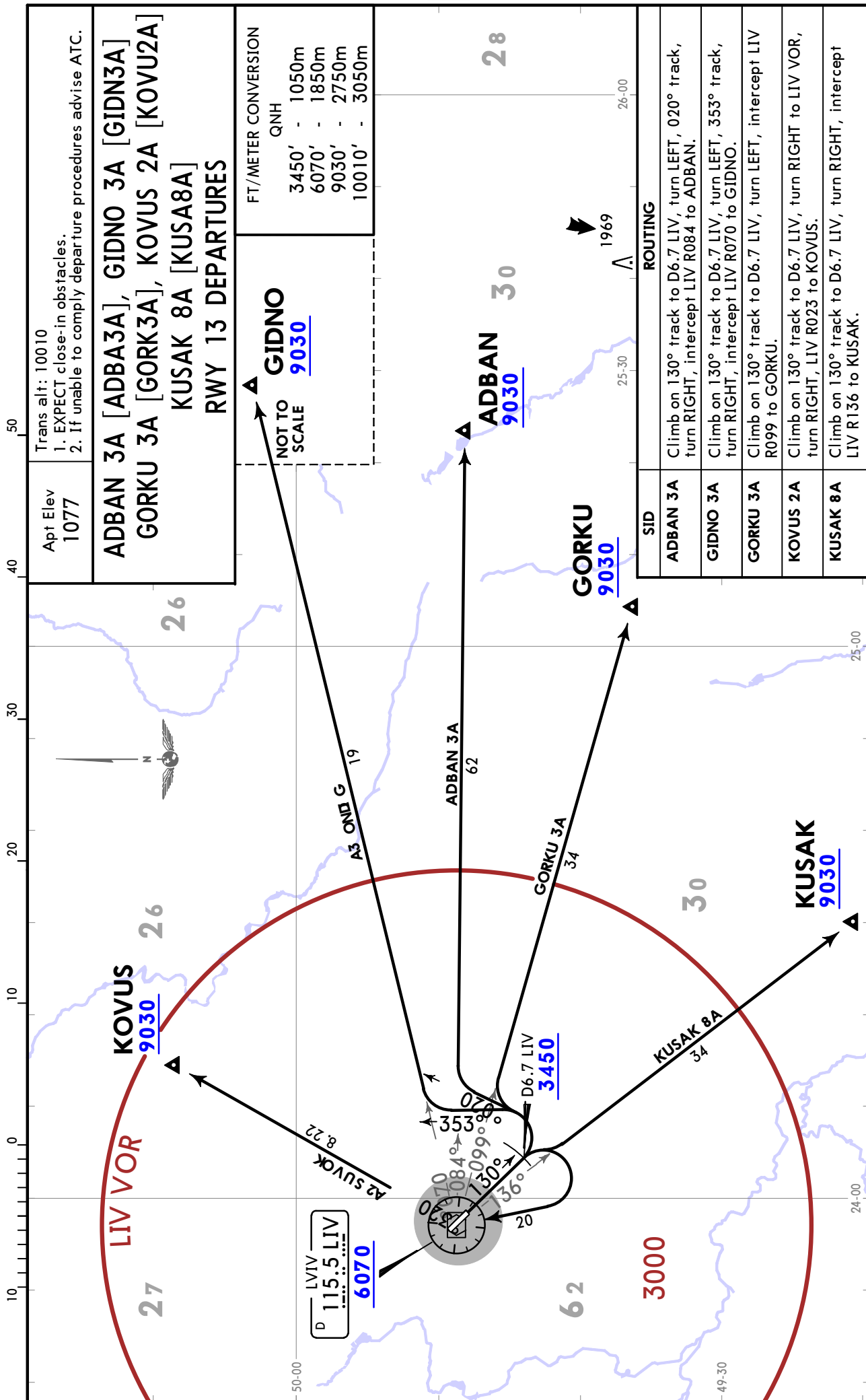
UKLL/LWO
LVIV INTL

JEPPESSEN

LVIV, UKRAINE

16 NOV 18 10-3D

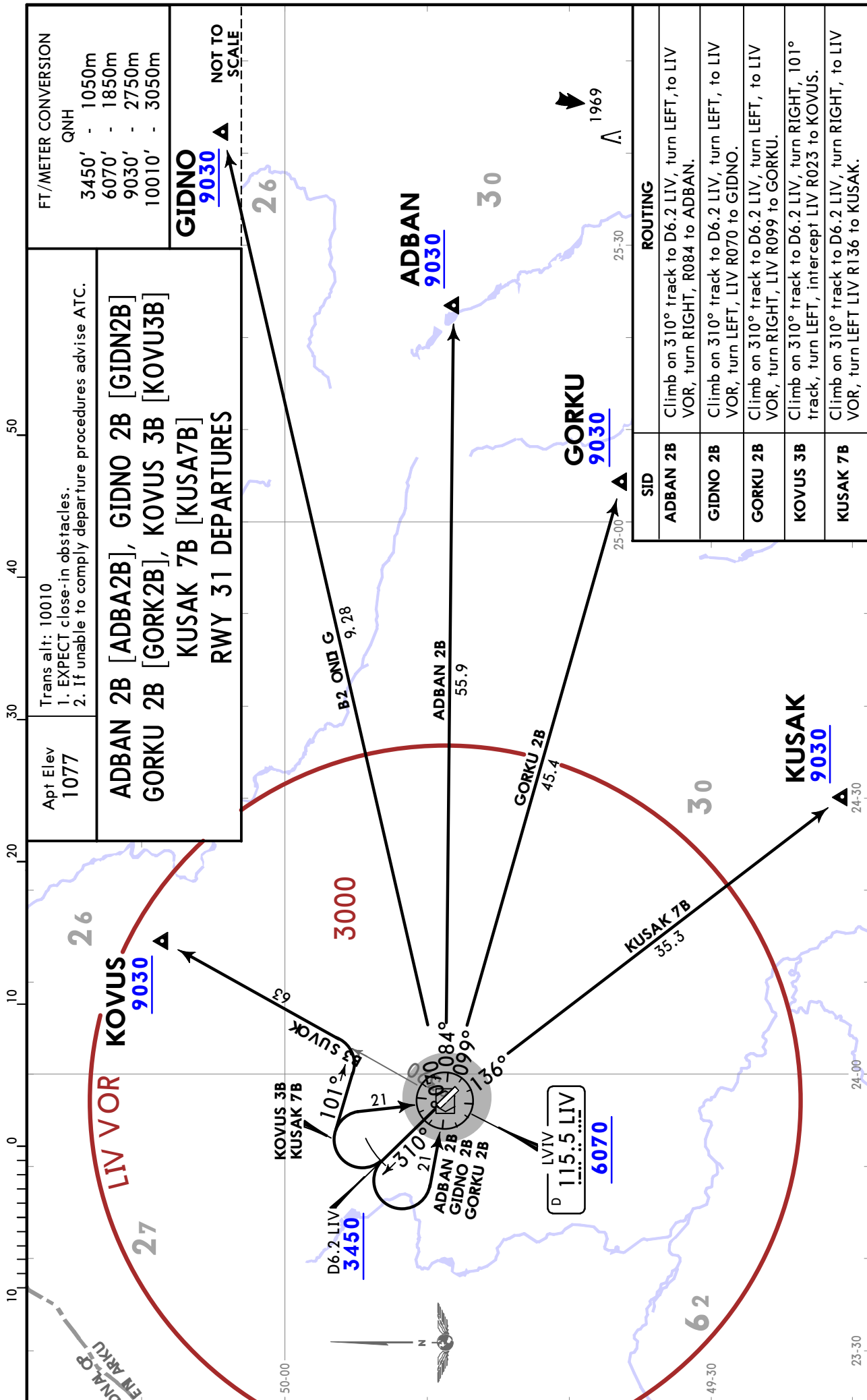
SID



UKLL/LWO
LVIV INTL

JEPPESSEN
16 NOV 18 (10-3E)

LVIV, UKRAINE
SID



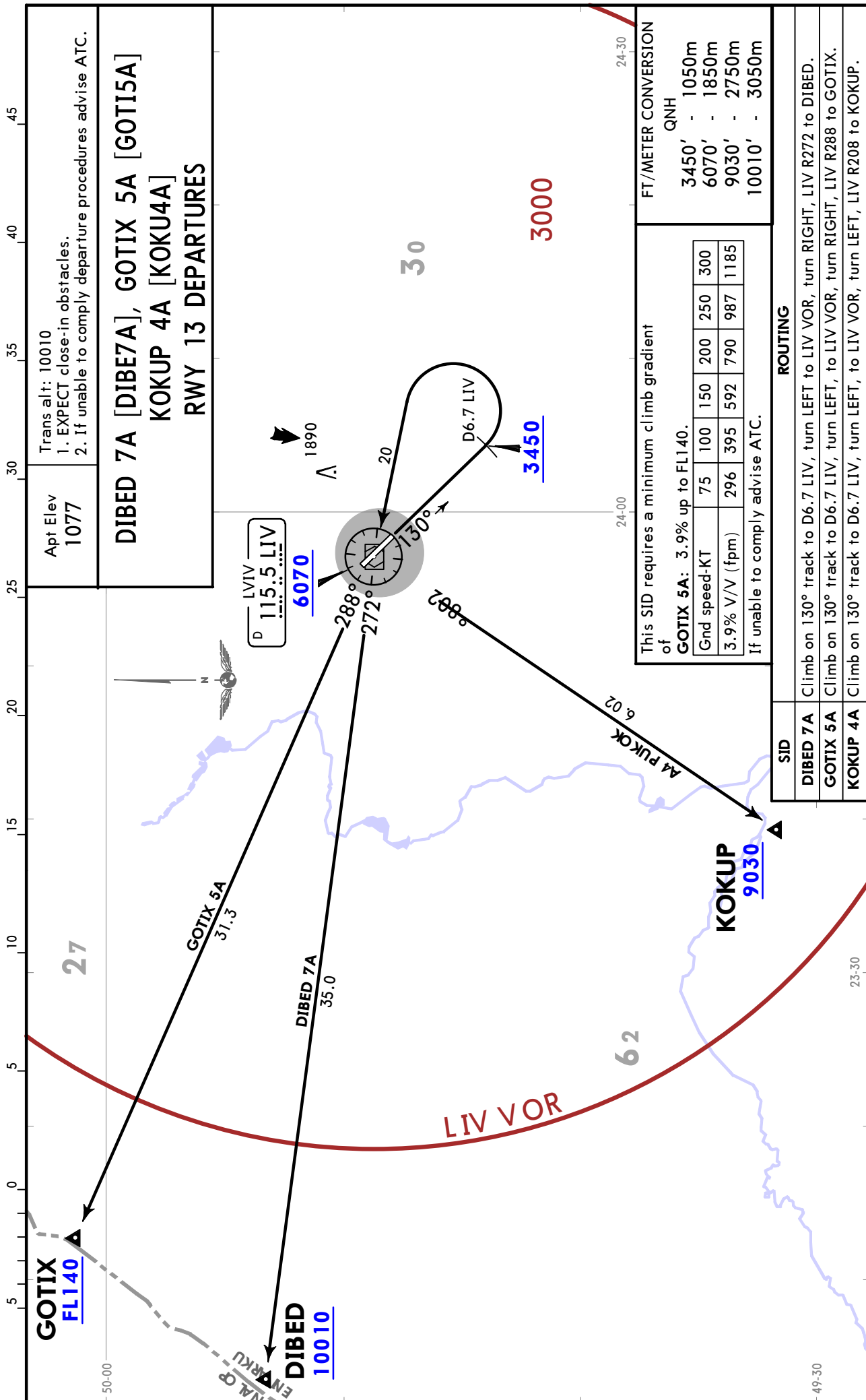
CHANGES: Location name, airport name, LIV VOR name.

© JEPPESSEN, 2018. ALL RIGHTS RESERVED.

UKLL/LWO
LVIV INTL

JEPPESSEN
16 NOV 18 (10-3F)

LVIV, UKRAINE
SID



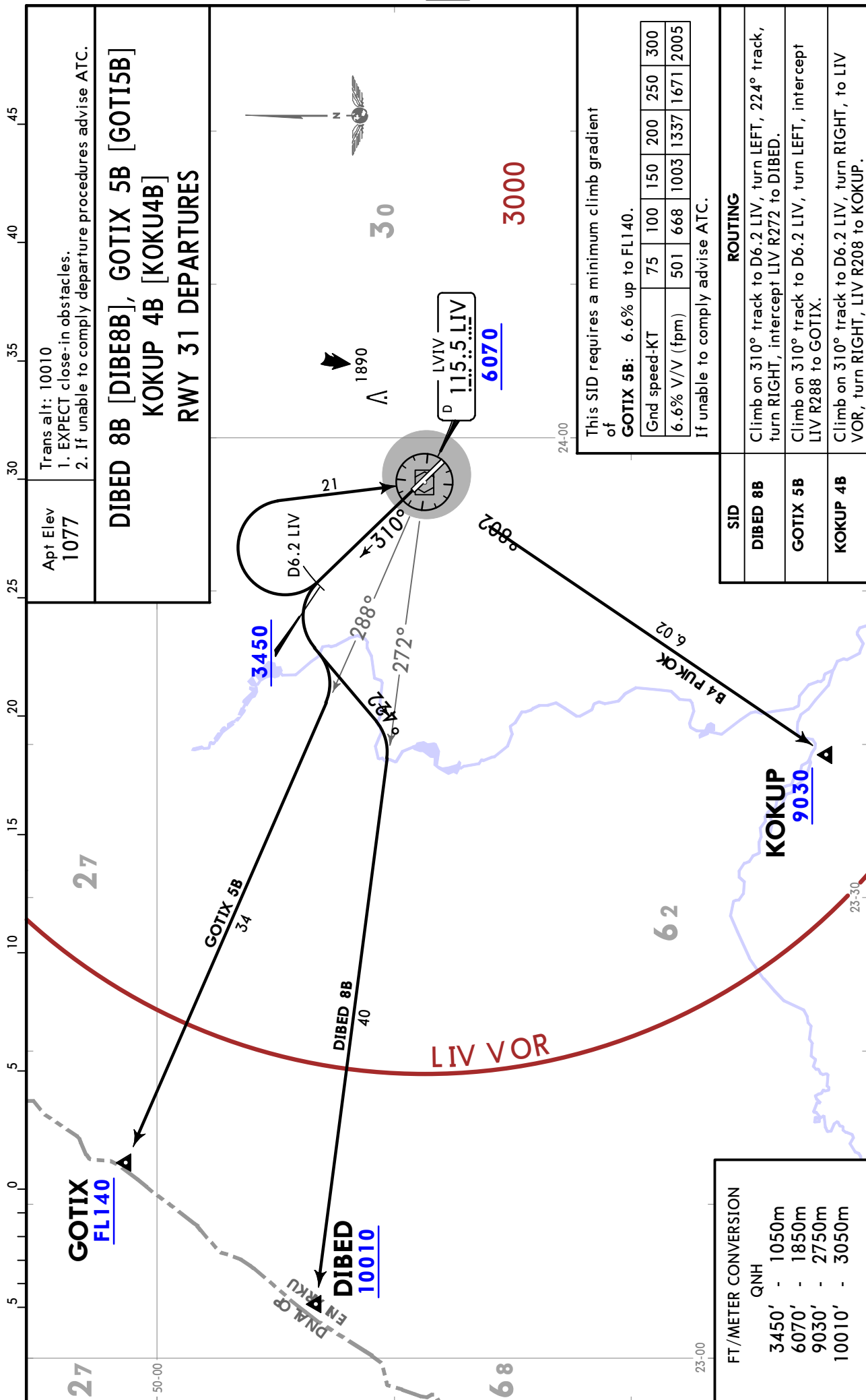
UKLL/LWO
LVIV INTL



16 NOV 18 (10-3G)

LVIV, UKRAINE

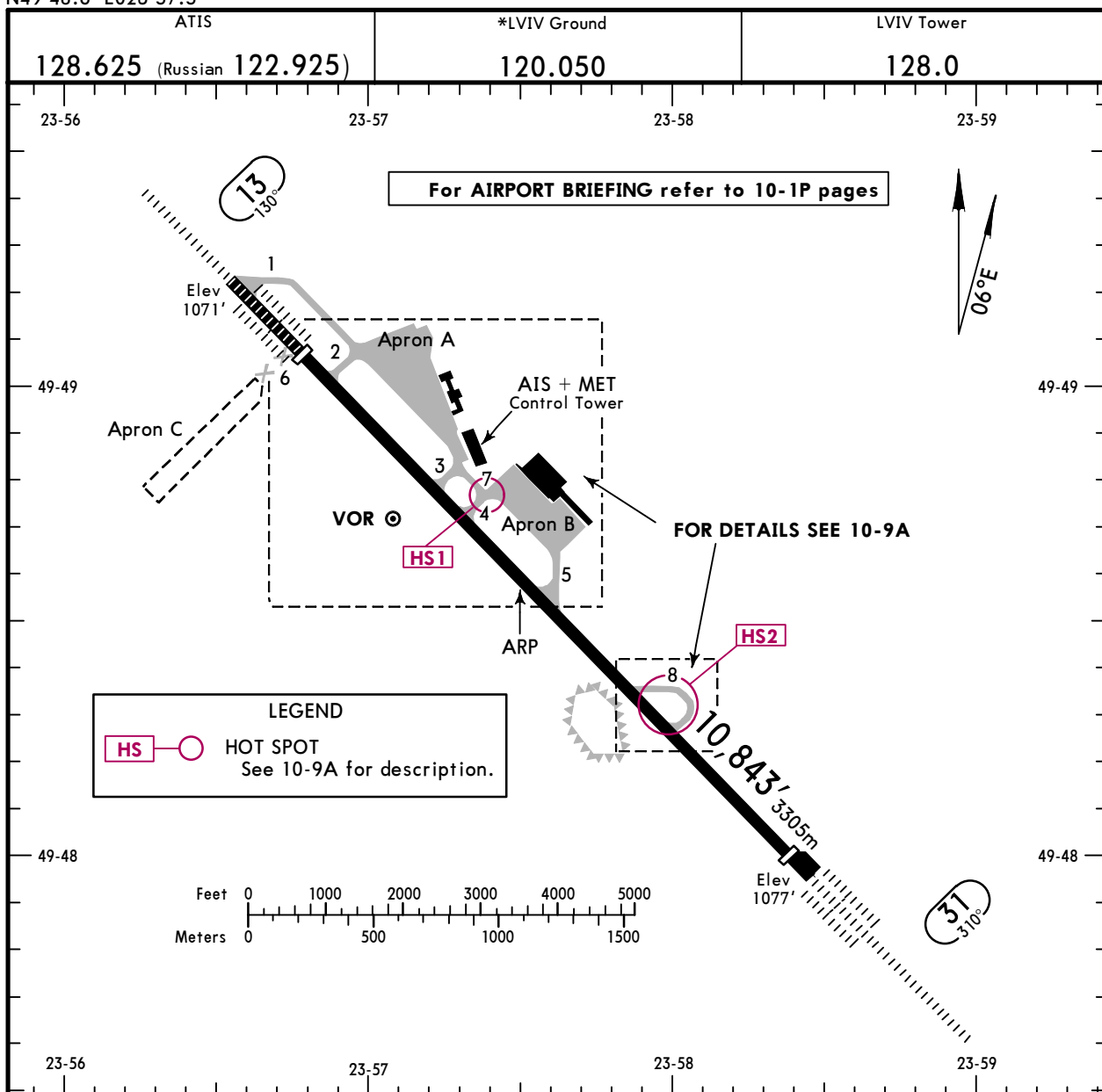
SID



UKLL/LWO
 Apt Elev **1077'**
 N49 48.6 E023 57.5

JEPPESSEN
 14 FEB 20 **(10-9)** Eff 27 Feb

LVIV, UKRAINE
 LVIV INTL



LEGEND
 HS — ○ HOT SPOT
 See 10-9A for description.

ADDITIONAL RUNWAY INFORMATION

RWY	Landing	USABLE LENGTHS		TAKE-OFF	WIDTH
		Threshold	Glide Slope		
13 31	HIRL (60m) CL (15m) HIALS-II TDZ ① RVR	9498' 2895m	8465' 2580m	②	148' 45m
		10,449' 3185m	9234' 2815m		

① PAPI-L (angle 3.0°)
 ② TAKE-OFF RUN AVAILABLE

RWY 13:	RWY 31:
From rwy head 10,843' (3305m)	From rwy head 10,384' (3165m)
twy 2 int 8793' (2680m)	twy 8 int 7415' (2260m)
twy 3 int 6824' (2080m)	twy 5 int 5118' (1560m)
twy 4 int 6234' (1900m)	twy 4 int 3609' (1100m)
twy 5 int 4593' (1400m)	twy 3 int 3084' (940m)

JAR-OPS TAKE-OFF ①

A	All Rwy's				
	Approved Operators	LVP must be in force			NIL (DAY only)
	HIRL, CL & mult. RVR req	RL, CL & mult. RVR req	RL & CL	RCLM (DAY only) or RL	RCLM (DAY only) or RL
B	125m	150m	200m	250m	400m
C					
D	150m	200m	250m	300m	500m

① Operators applying U.S. Ops Specs: CL required below 300m; approved HUD required below 150m.

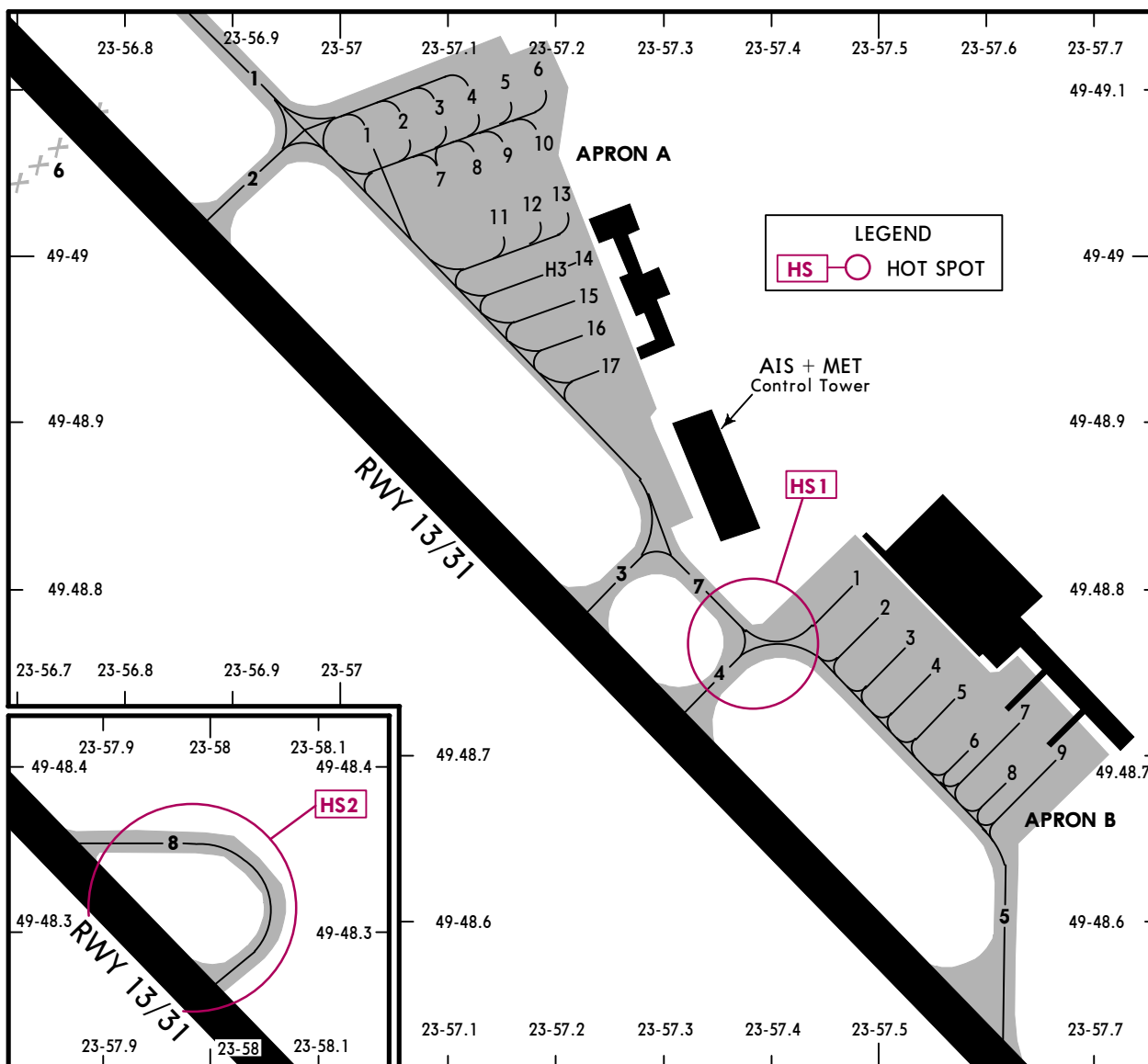
UKLL/LWO

JEPPESEN

LVIV, UKRAINE

14 FEB 20 10-9A Eff 27 Feb

LVIV INTL



HOT SPOTS

(For information only, not to be construed as ATC instructions.)

HS1 Warning sign at the intersection of rwy, twy and aprons. Listen with caution ATC taxi instruction. Taxi to/from apron via Twy 7 or Twy 4 by Follow-me car and Follow-me instructions.

HS2 TAXIING WITH CAUTION. Listen carefully to ATC taxi instruction.

INS COORDINATES

STAND No.	COORDINATES
APRON A	
1	N49 49.1 E023 57.0
2 thru 4	N49 49.1 E023 57.1
5, 6	N49 49.1 E023 57.2
7, 8	N49 49.0 E023 57.1
9 thru 14, H3	N49 49.0 E023 57.2
15 thru 17	N49 48.9 E023 57.3
APRON B	
1 thru 3	N49 48.8 E023 57.5
4	N49 48.8 E023 57.6
5 thru 7	N49 48.7 E023 57.6
8, 9	N49 48.7 E023 57.7

UKLL/LWO



Standard
LVIV, UKRAINE
LVIV INTL

STRAIGHT-IN RWY		A	B	C	D
13	CAT II ILS	1220'(151') RA149'R450m	1236'(167') RA165'R450m	1249'(180') RA178'R450m	1263'(194') RA191'R450m
	ILS FULL	1309'(240') R550m	1318'(249') R550m	1328'(259') R600m	1338'(269') R600m
	TDZ or CL out	② R550m	② R550m	② R600m	② R600m
	ALS out	R1200m	R1300m	R1300m	R1300m
	LOC ①	1430'(361') R1000m	1430'(361') R1000m	1430'(361') R1000m	1430'(361') R1000m
ALS out	R1500m	R1500m	R1700m	R1700m	
VOR ①	1550'(481') R1500m	1550'(481') R1500m	1550'(481') R1500m	1550'(481') R1500m	
ALS out	R1500m	R1500m	R2300m	R2300m	
31	CAT II ILS	1182'(108') RA98'R300m	1199'(125') RA110'R400m	1212'(138') RA117'R400m	1225'(151') RA128'R450m
	ILS FULL	1274'(200') R550m	1281'(207') R550m	1291'(217') R550m	1300'(226') R550m
	TDZ or CL out	② R550m	② R550m	② R550m	② R550m
	ALS out	R1200m	R1200m	R1200m	R1200m
	LOC ①	1510'(436') R1300m	1510'(436') R1300m	1510'(436') R1300m	1510'(436') R1300m
ALS out	R1500m	R1500m	R2000m	R2000m	
VOR ①	1550'(476') R1500m	1550'(476') R1500m	1550'(476') R1500m	1550'(476') R1500m	
ALS out	R1500m	R1500m	R2200m	R2200m	

① Continuous Descent Final Approach.

② W/o HUD/AP/FD: RVR 750m

CIRCLE-TO-LAND	100 KT	135 KT	180 KT	205 KT
	1730'(653') V1500m	1730'(653') V1600m	2300'(1223') V2400m	2300'(1223') V3600m

TAKE-OFF RWY 13, 31

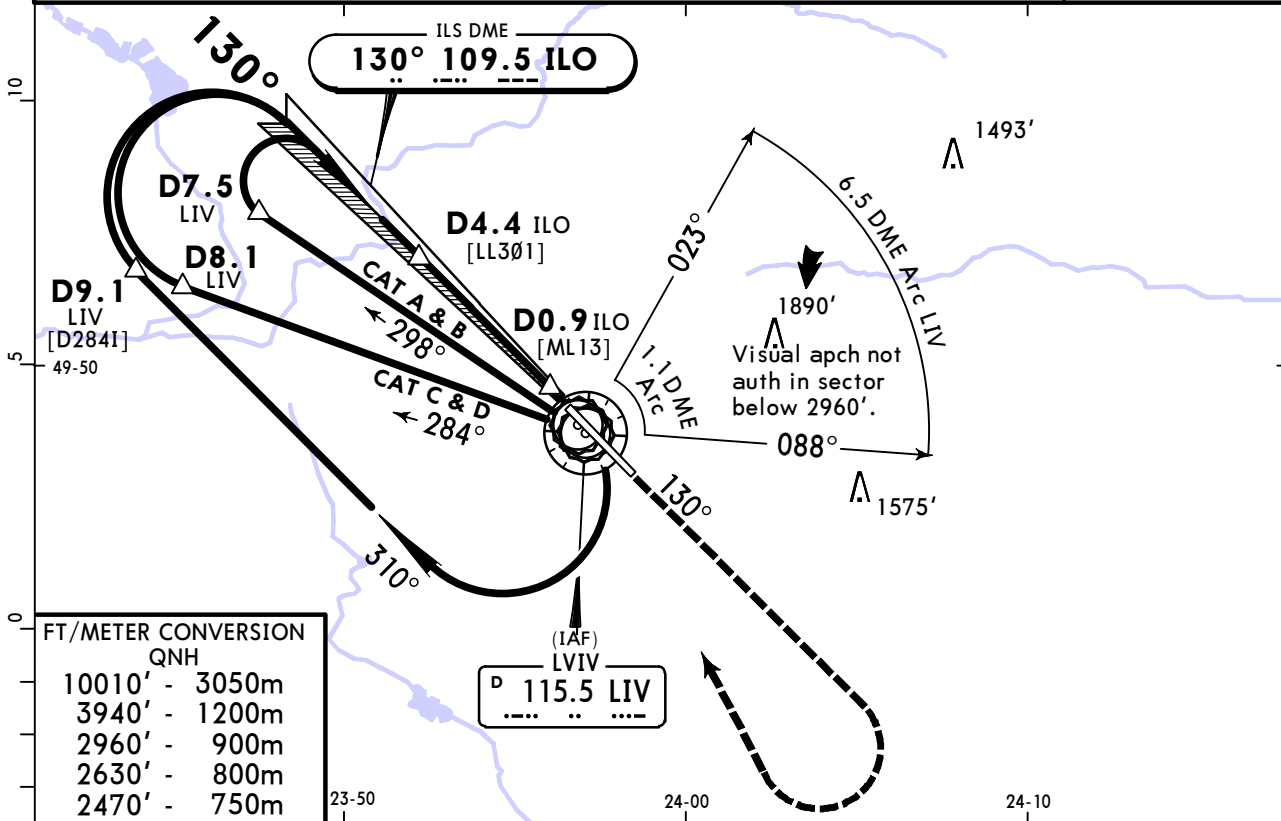
Low Visibility Take-off						
	HIRL, CL & relevant RVR	RL, CL & relevant RVR	RL & CL	Day: RL & RCLM Night: RL or CL	Day: RL or RCLM Night: RL or CL	Adequate vis ref (Day only)
A						
B	TDZ, MID, RO	TDZ, MID, RO				
C	RVR 125m	RVR 150m	RVR 200m	RVR 300m	400m	500m
D						

UKLL/LWO
LVIV INTL

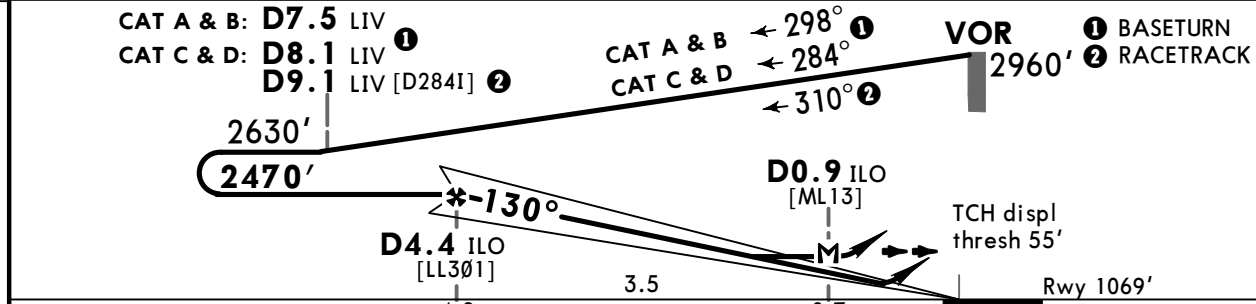
JEPPESSEN
3 JUL 20 (11-1)

LVIV, UKRAINE
ILS or LOC Rwy 13

ATIS 128.625 (Russian 122.925)		LVIV Radar (APP) 120.525	LVIV Tower 128.0	*LVIV Ground 120.050
LOC ILO 109.5	Final Apch Crs 130°	D4.4 ILO 2470' (1401')	ILS DA(H) Refer to Minimums	Apt Elev 1077' Rwy 1069'
MISSED APCH: Climb on 130° to 2960', turn RIGHT to VOR, then according to chart or as directed.				
Alt Set: hPa (MM on req) Rwy Elev: 39 hPa Trans level: By ATC Trans alt: 10010'				
1. DME required. 2. Procedure restricted to MAX 230 KT.				



LOC	ILO DME	4.3	3.2	2.2
(GS out)	ALTITUDE	2440'	2100'	1760'



Gnd speed-Kts	70	90	100	120	140	160	HIALS-II PAPI 	2960' on 130°
ILS GS or LOC Descent Angle 3.00°	372	478	531	637	743	849		
MAP at D0.9 ILO								

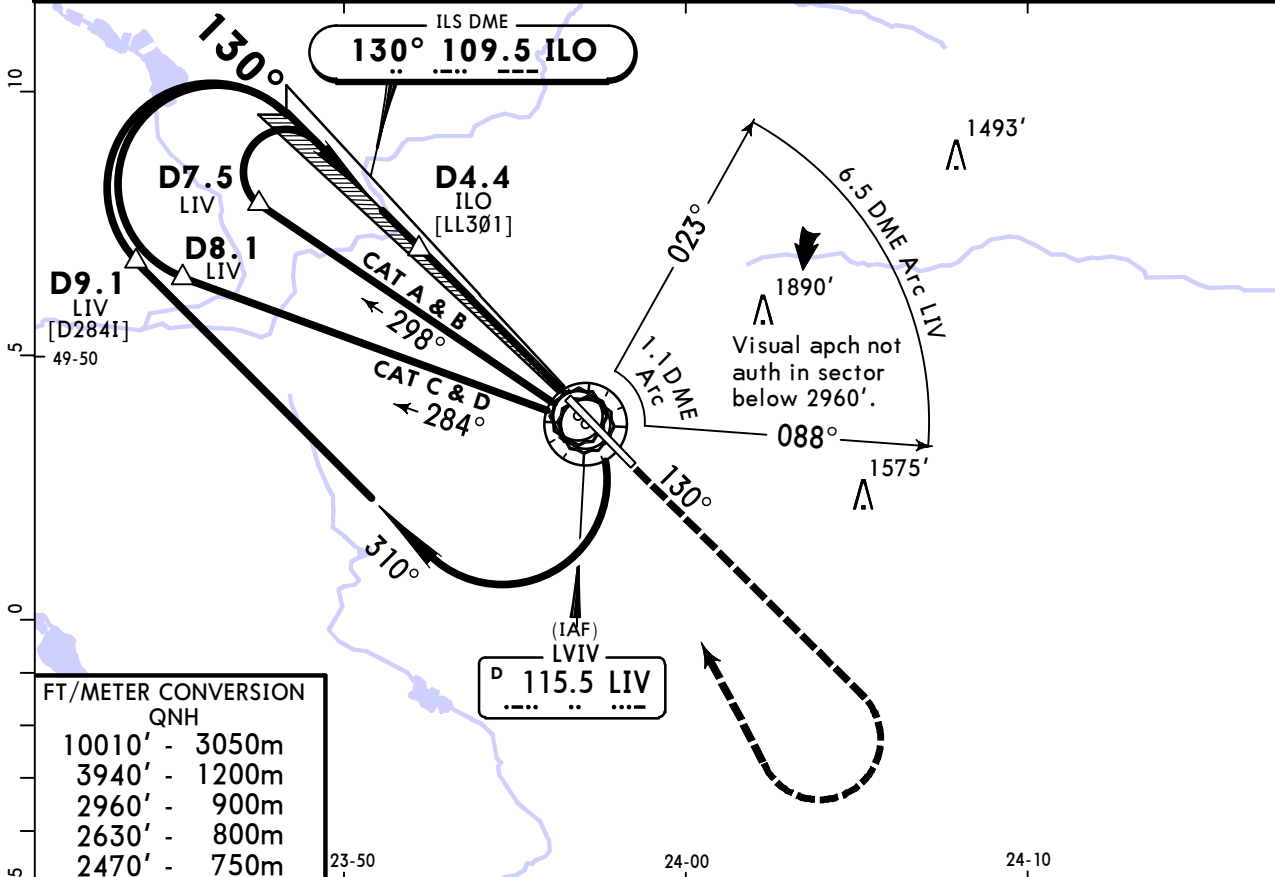
JAR-OPS				STRAIGHT-IN LANDING RWY 13				CIRCLE-TO-LAND			
ILS A: 1309' (240') C: 1328' (259') DA(H) B: 1318' (249') D: 1338' (269')		LOC (GS out) MDA(H) 1430' (361')		FULL RVR 600m		ALS out RVR 1000m		Max Kts 100		MDA(H) VIS 1730' (653') 1500m	
A	RVR 600m	RVR 1000m	RVR 900m	RVR 1500m	135	1730' (653')	1600m				
B	RVR 650m	RVR 1200m	RVR 1000m	RVR 1800m	180	2300' (1223')	2400m				
C	RVR 650m	RVR 1200m	RVR 1400m	RVR 2000m	205	2300' (1223')	3600m				

UKLL/LWO
LVIV INTL

JEPPESSEN
3 JUL 20 **(11-1A)**

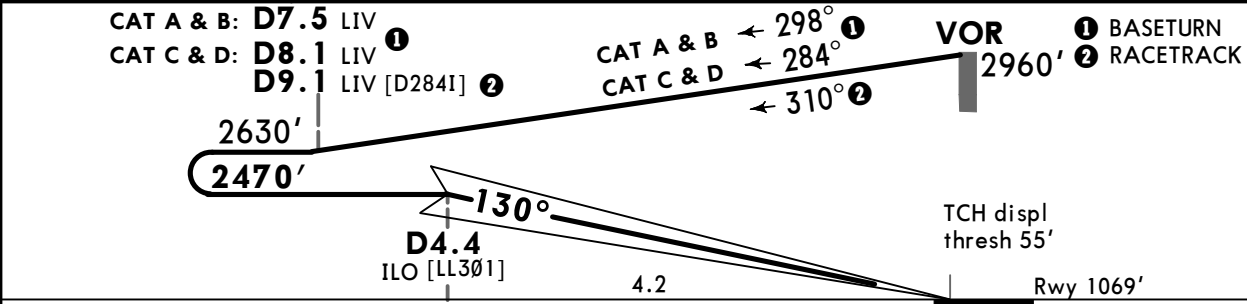
LVIV, UKRAINE
CAT II ILS Rwy 13

ATIS 128.625 (Russian 122.925)		LVIV Radar (APP) 120.525	LVIV Tower 128.0	*LVIV Ground 120.050
LOC ILO 109.5	Final Apch Crs 130°	D4.4 ILO 2470' (1401')	CAT II ILS RA/DA(H) Refer to Minimums	Apt Elev 1077' Rwy 1069'
MISSED APCH: Climb on 130° to 2960', turn RIGHT to VOR, then according to chart or as directed.				3000 MSA LIV VOR
Alt Set: hPa (MM on req)		Rwy Elev: 39 hPa	Trans level: By ATC	Trans alt: 10010'
1. DME required. 2. Procedure restricted to MAX 230 KT.				

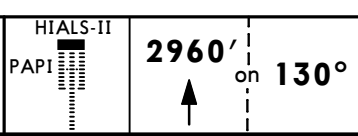


FT/METER CONVERSION
QNH

10010'	-	3050m
3940'	-	1200m
2960'	-	900m
2630'	-	800m
2470'	-	750m



Gnd speed-Kts	70	90	100	120	140	160	
GS	3.00°	372	478	531	637	743	849



JAR-OPS STRAIGHT-IN LANDING RWY 13 CAT II ILS

A RA 149' DA(H) 1220' (151')	B RA 165' DA(H) 1236' (167')	C RA 178' DA(H) 1249' (180')	D RA 191' DA(H) 1263' (194')
---	---	---	---

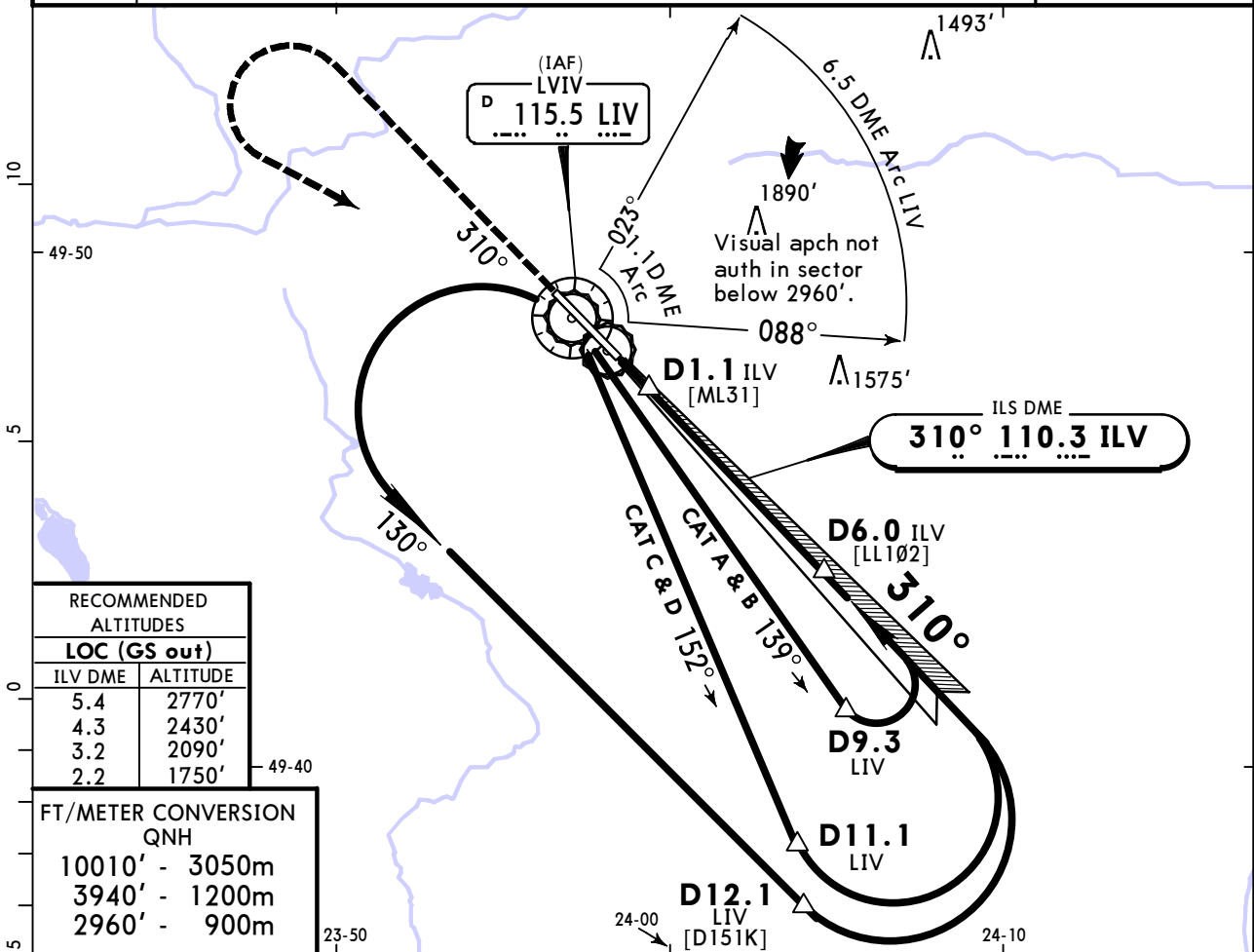
RVR 450m

UKLL/LWO
LVIV INTL

JEPPESSEN
3 JUL 20 **(11-2)**

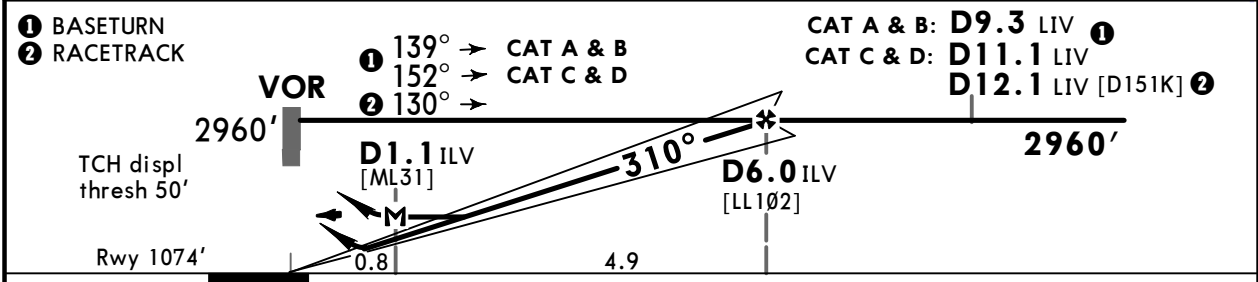
LVIV, UKRAINE
ILS or LOC Rwy 31

ATIS 128.625 (Russian 122.925)		LVIV Radar (APP) 120.525	LVIV Tower 128.0	*LVIV Ground 120.050
LOC ILV 110.3	Final Apch Crs 310°	D6.0 ILV 2960' (1886')	ILS DA(H) Refer to Minimums	Apt Elev 1077' Rwy 1074'
MISSED APCH: Climb on track 310° to 2960', turn LEFT to VOR, then according to chart or as directed.				3000 MSA LIV VOR
Alt Set: hPa (MM on req) Rwy Elev: 39 hPa Trans level: By ATC Trans alt: 10010'				
DME required.				



RECOMMENDED ALTITUDES	
LOC (GS out)	
ILV DME	ALTITUDE
5.4	2770'
4.3	2430'
3.2	2090'
2.2	1750'

FT/METER CONVERSION QNH	
10010'	3050m
3940'	1200m
2960'	900m



Gnd speed-Kts	70	90	100	120	140	160	HIALS-II PAPI	2960' on 310°	
ILS GS or LOC Descent Angle	3.00°	372	478	531	637	743			849
MAP at D1.1 ILV									

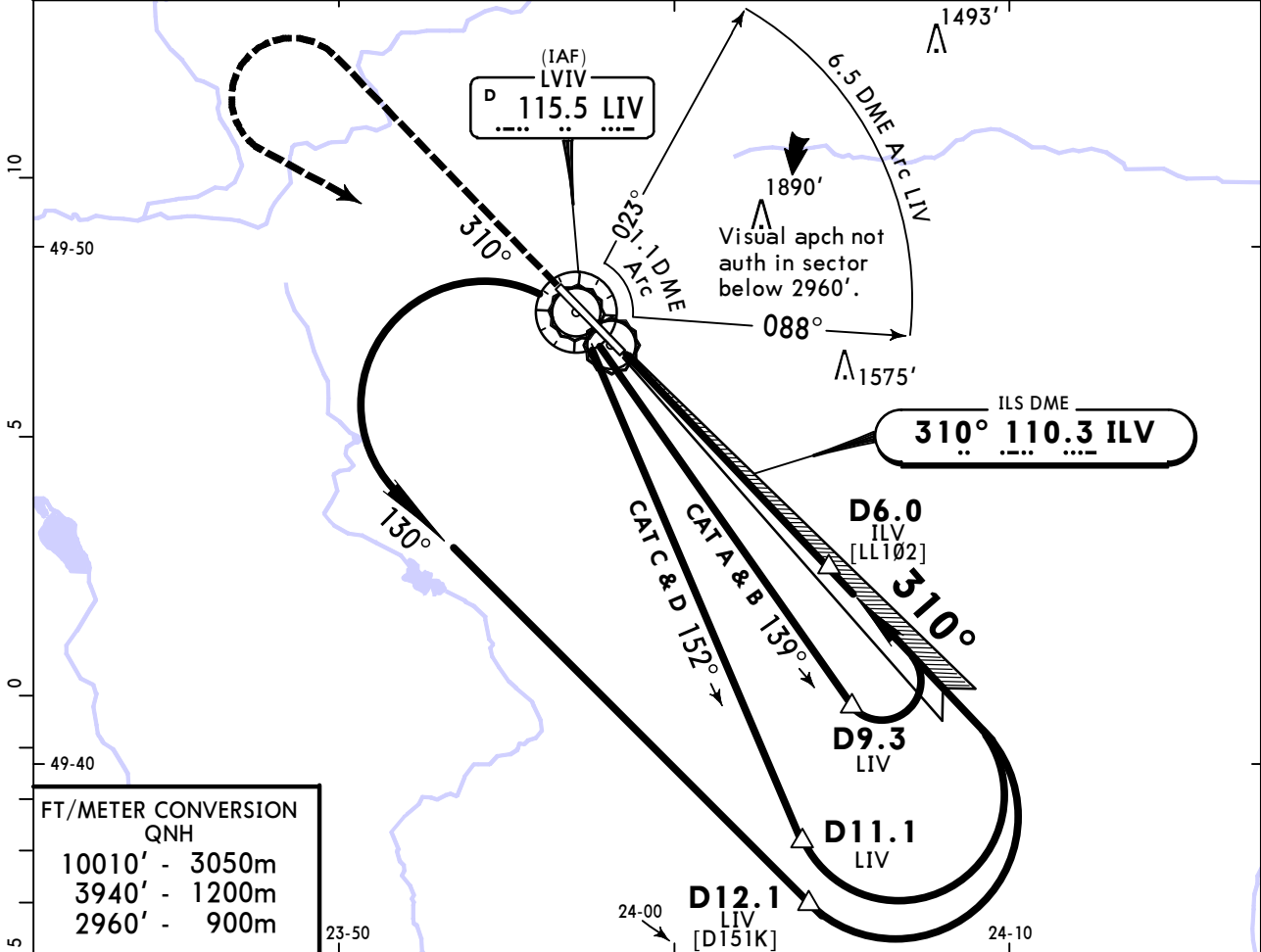
PANS OPS	JAR-OPS STRAIGHT-IN LANDING RWY 31				CIRCLE-TO-LAND	
	ILS		LOC (GS out)		Max Kts	MDA(H) VIS
	FULL	ALS out	FULL	ALS out		
A	RVR 550m	RVR 1000m	A: 1274' (200')	C: 1291' (217')	100	1730' (653') 1500m
B	RVR 600m		DA(H) B: 1281' (207')	D: 1300' (226')	135	1730' (653') 1600m
C				MDA(H) 1510' (436')	180	2300' (1223') 2400m
D					205	2300' (1223') 3600m

UKLL/LWO
LVIV INTL

JEPPESSEN
3 JUL 20 **(11-2A)**

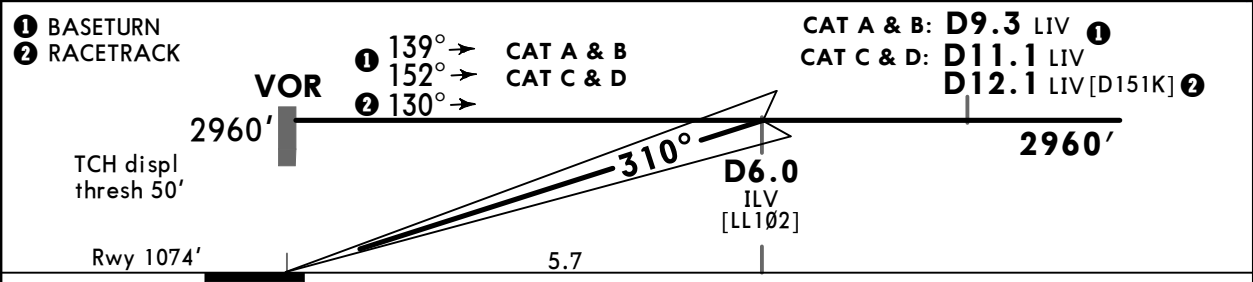
LVIV, UKRAINE
CAT II ILS Rwy 31

ATIS 128.625 (Russian 122.925)		LVIV Radar (APP) 120.525	LVIV Tower 128.0	*LVIV Ground 120.050
LOC ILV 110.3	Final Apch Crs 310°	D6.0 ILV 2960' (1886')	CAT II ILS RA/DA(H) Refer to Minimums	Apt Elev 1077' Rwy 1074'
MISSED APCH: Climb on track 310° to 2960', turn LEFT to VOR, then according to chart or as directed.				3000 MSA LIV VOR
Alt Set: hPa (MM on req) Rwy Elev: 39 hPa Trans level: By ATC Trans alt: 10010'				
DME required.				



FT/METER CONVERSION
QNH

10010'	-	3050m
3940'	-	1200m
2960'	-	900m



Gnd speed-Kts	70	90	100	120	140	160	HIALS-II PAPI	2960' on 310°
Gs	3.00°	372	478	531	637	849		

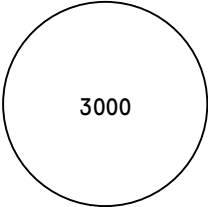
JAR-OPS STRAIGHT-IN LANDING RWY 31 CAT II ILS

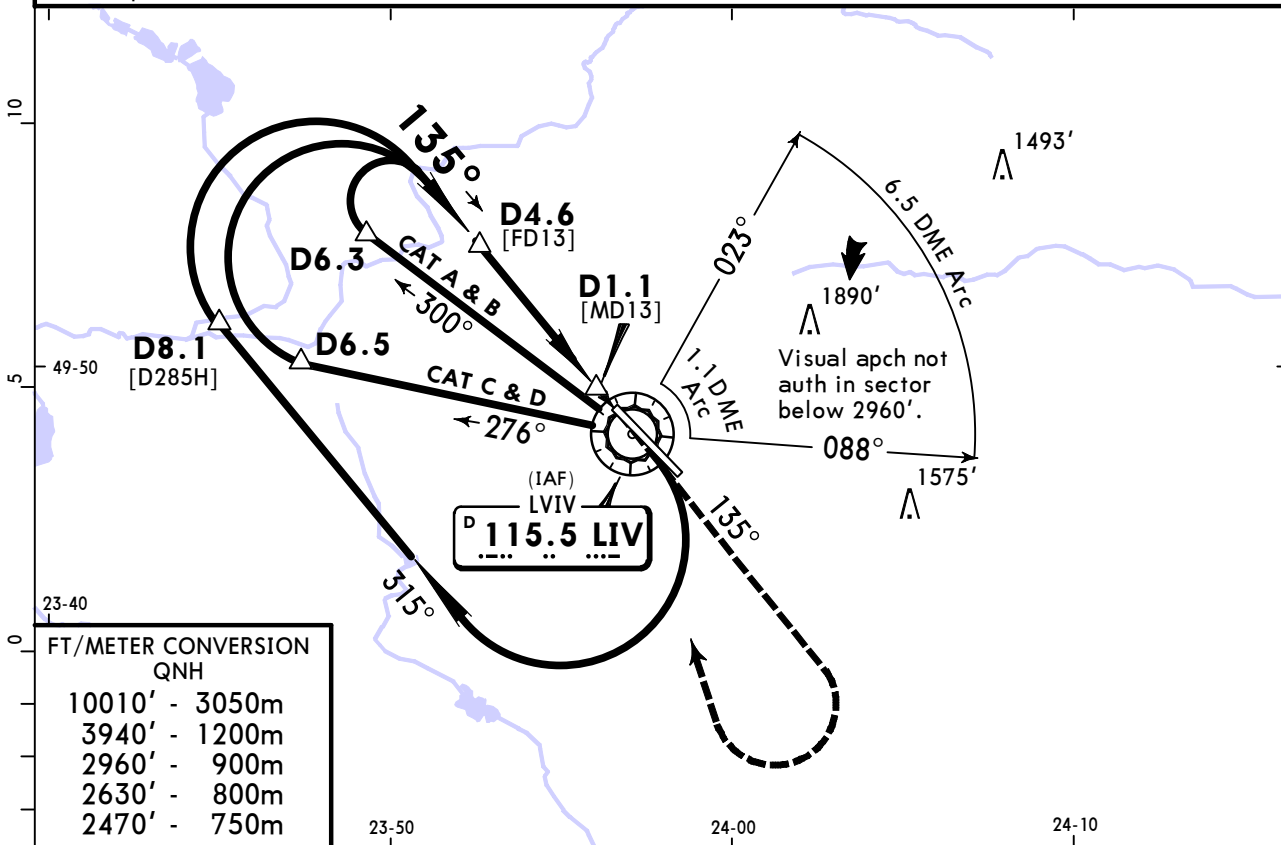
A RA 98' DA(H) 1182' (108')	B RA 110' DA(H) 1199' (125')	C RA 117' DA(H) 1212' (138')	D RA 128' DA(H) 1225' (151')
RVR 300m	RVR 400m	RVR 450m	

UKLL/LWO
LVIV INTL

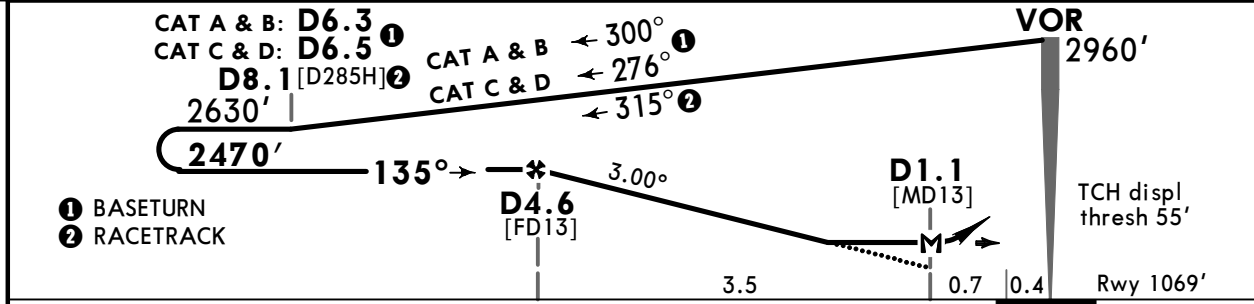
JEPPESSEN
3 JUL 20 (13-1)

LVIV, UKRAINE
VOR Rwy 13

BRIEFING STRIP™	ATIS 128.625 (Russian 122.925)	LVIV Radar (APP) 120.525	LVIV Tower 128.0	*LVIV Ground 120.050		
	VOR LIV 115.5	Final Apch Crs 135°	D4.6 2470' (1401')	MDA(H) 1550' (481')		Apt Elev 1077' Rwy 1069'
	MISSED APCH: Climb on 135° to 2960', turn RIGHT to VOR, then according to chart or as directed.					MSA LIV VOR
Alt Set: hPa (MM on req)		Rwy Elev: 39 hPa	Trans level: By ATC		Trans alt: 10010'	
DME required.						



LIV DME	4.3	3.2	2.2
ALTITUDE	2380'	2040'	1690'



Gnd speed-Kts	70	90	100	120	140	160	HIALS-II PAPI 2960' on 135°
Descent Angle 3.00°	372	478	531	637	743	849	
MAP at D1.1							

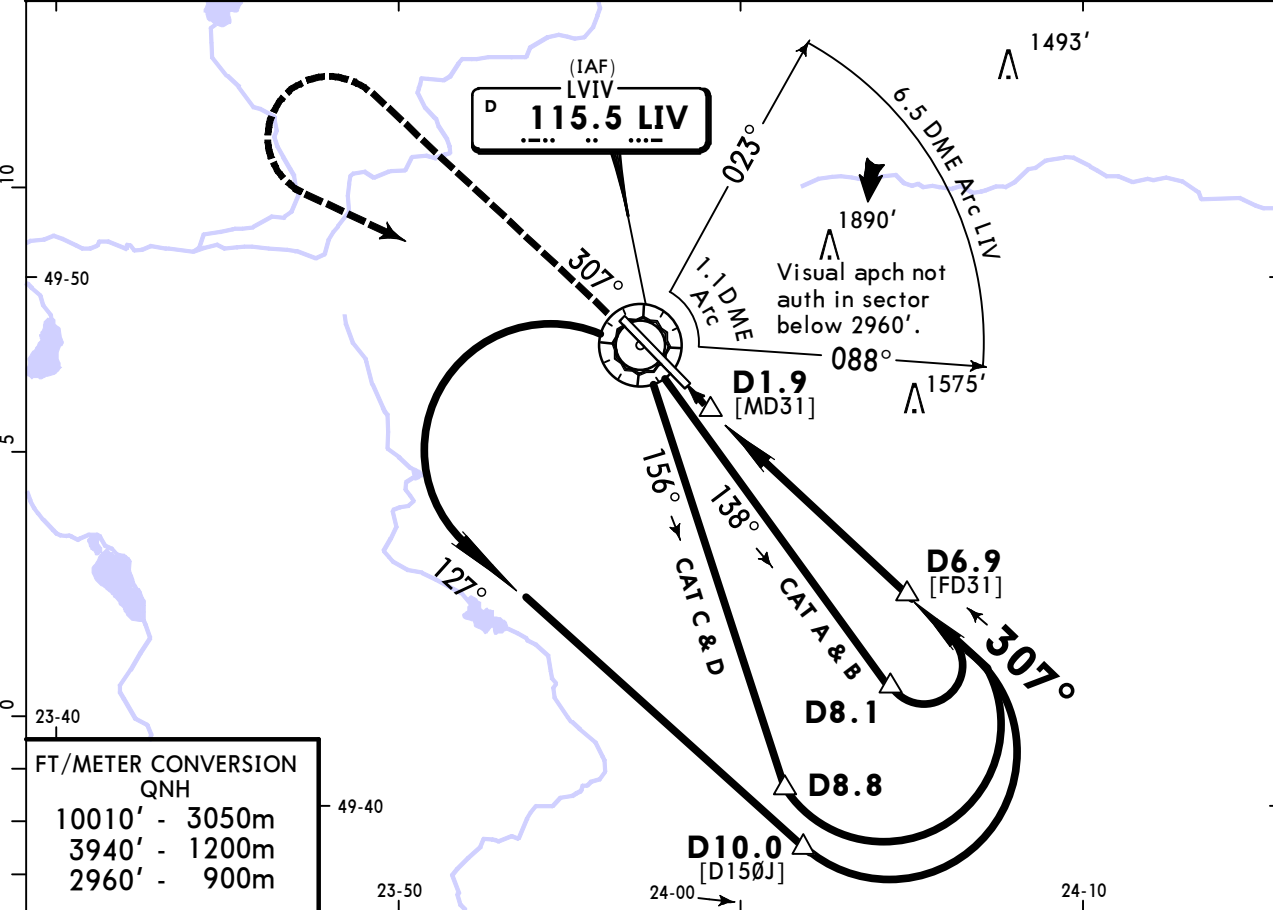
PANS OPS	JAR-OPS			STRAIGHT-IN LANDING RWY13			CIRCLE-TO-LAND		
	MDA(H) 1550' (481')						Max Kts		
	ALS out			RVR			MDA(H)		
	A	RVR 1000m	RVR 1500m			100	1730' (653')	1500m	
	B	RVR 1200m	RVR 2000m			135	1730' (653')	1600m	
C	RVR 1600m				180	2300' (1223')	2400m		
D	RVR 1600m				205	2300' (1223')	3600m		

UKLL/LWO
LVIV INTL

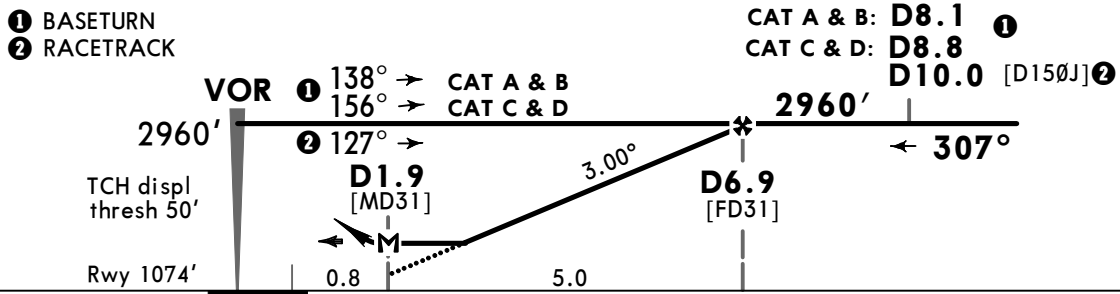
JEPPESEN
3 JUL 20 (13-2)

LVIV, UKRAINE
VOR Rwy 31

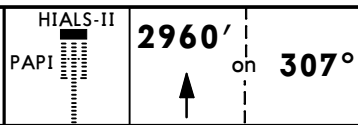
ATIS 128.625 (Russian) 122.925)		LVIV Radar (APP) 120.525	LVIV Tower 128.0	*LVIV Ground 120.050	3000 MSA LIV VOR
VOR LIV 115.5	Final Apch Crs 307°	D6.9 2960' (1886')	MDA(H) 1550' (476')	Apt Elev 1077' Rwy 1074'	
MISSED APCH: Climb on track 307° to 2960', turn LEFT to VOR, then according to chart or as directed.					
Alt Set: hPa (MM on req)		Rwy Elev: 39 hPa	Trans level: By ATC	Trans alt: 10010'	
DME required.					



LIV DME	3.2	4.3	5.4	6.5
ALTITUDE	1810'	2150'	2500'	2830'



Gnd speed-Kts	70	90	100	120	140	160
Descent Angle	3.00°	372	478	531	637	743
MAP at D1.9						



JAR-OPS			STRAIGHT-IN LANDING RWY 31		CIRCLE-TO-LAND	
MDA(H) 1550 (476')			ALS out		Max Kts	MDA(H) VIS
A	RVR 1000m		RVR 1500m		100	1730'(653') 1500m
B					135	1730'(653') 1600m
C	RVR 1200m		RVR 2000m		180	2300'(1223') 2400m
D	RVR 1600m				205	2300'(1223') 3600m

Chart changes since cycle 01-2021

ADD = added chart, REV = revised chart, DEL = deleted chart.

ACT	PROCEDURE IDENT	INDEX	REV DATE	EFF DATE
-----	-----------------	-------	----------	----------

LVIV, (LVIV INTL - UKLL)

TERMINAL CHART CHANGE NOTICES

No Chart Change Notices for Airport UKLL