

AERODROME CHART-ICAO

ARP:
48°32'29"N
032°16'58"E

ELEV 171 m

AFIS 120.800
TWR 120.800

KIROVOHRAD

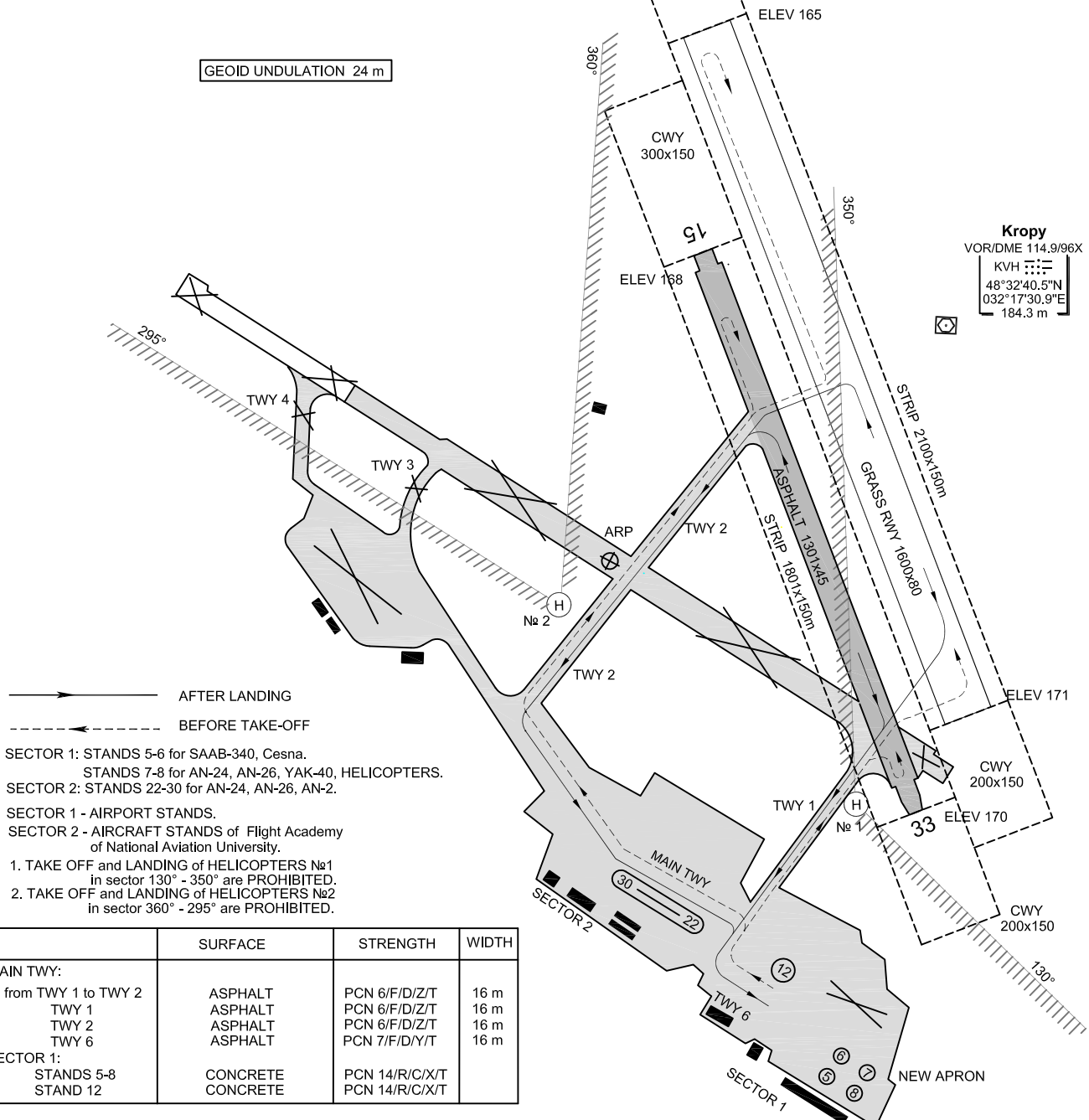
NOT TO SCALE



RWY 15 / 33			
DECLARED DISTANCES			
RWY 15		RWY 33	
1296	TAKE-OFF RUN AVAILABLE	1296	
1496	TAKE-OFF DISTANCE AVAILABLE	1596	
1296	ACCELERATE STOP DISTANCE AVAILABLE	1296	
1296	LANDING DISTANCE AVAILABLE	1296	

GRASS RWY 15 / 33			
DECLARED DISTANCES			
RWY 15		RWY 33	
1600	TAKE-OFF RUN AVAILABLE	1600	
1800	TAKE-OFF DISTANCE AVAILABLE	1900	
1600	ACCELERATE STOP DISTANCE AVAILABLE	1600	
1600	LANDING DISTANCE AVAILABLE	1600	

GEOID UNDULATION 24 m



Kropy
VOR/DME 114.9/96X
KVH
48°32'40.5"N
032°17'30.9"E
184.3 m

→ AFTER LANDING
← BEFORE TAKE-OFF

- SECTOR 1: STANDS 5-6 for SAAB-340, Cesna.
STANDS 7-8 for AN-24, AN-26, YAK-40, HELICOPTERS.
SECTOR 2: STANDS 22-30 for AN-24, AN-26, AN-2.
SECTOR 1 - AIRPORT STANDS.
SECTOR 2 - AIRCRAFT STANDS of Flight Academy of National Aviation University.
1. TAKE OFF and LANDING of HELICOPTERS №1 in sector 130° - 350° are PROHIBITED.
2. TAKE OFF and LANDING of HELICOPTERS №2 in sector 360° - 295° are PROHIBITED.

	SURFACE	STRENGTH	WIDTH
MAIN TWY:			
from TWY 1 to TWY 2	ASPHALT	PCN 6/F/D/Z/T	16 m
TWY 1	ASPHALT	PCN 6/F/D/Z/T	16 m
TWY 2	ASPHALT	PCN 6/F/D/Z/T	16 m
TWY 6	ASPHALT	PCN 7/F/D/Y/T	16 m
SECTOR 1:			
STANDS 5-8	CONCRETE	PCN 14/R/C/X/T	
STAND 12	CONCRETE	PCN 14/R/C/X/T	

RWY	DIRECTION	THR	BEARING STRENGTH	AERODROME LIGHTING: NIL
15	154°	48°32'52.85"N 032°17'07.62"E	PCN 13/F/D/Y/T	
33	334°	48°32'13.05"N 032°17'28.38"E		
GRASS RWY	DIRECTION	THR	BEARING STRENGTH	AERODROME LIGHTING: NIL
15	154°	48°33'06.0"N 032°17'06.0"E	—	
33	334°	48°32'17.0"N 032°17'32.0"E		

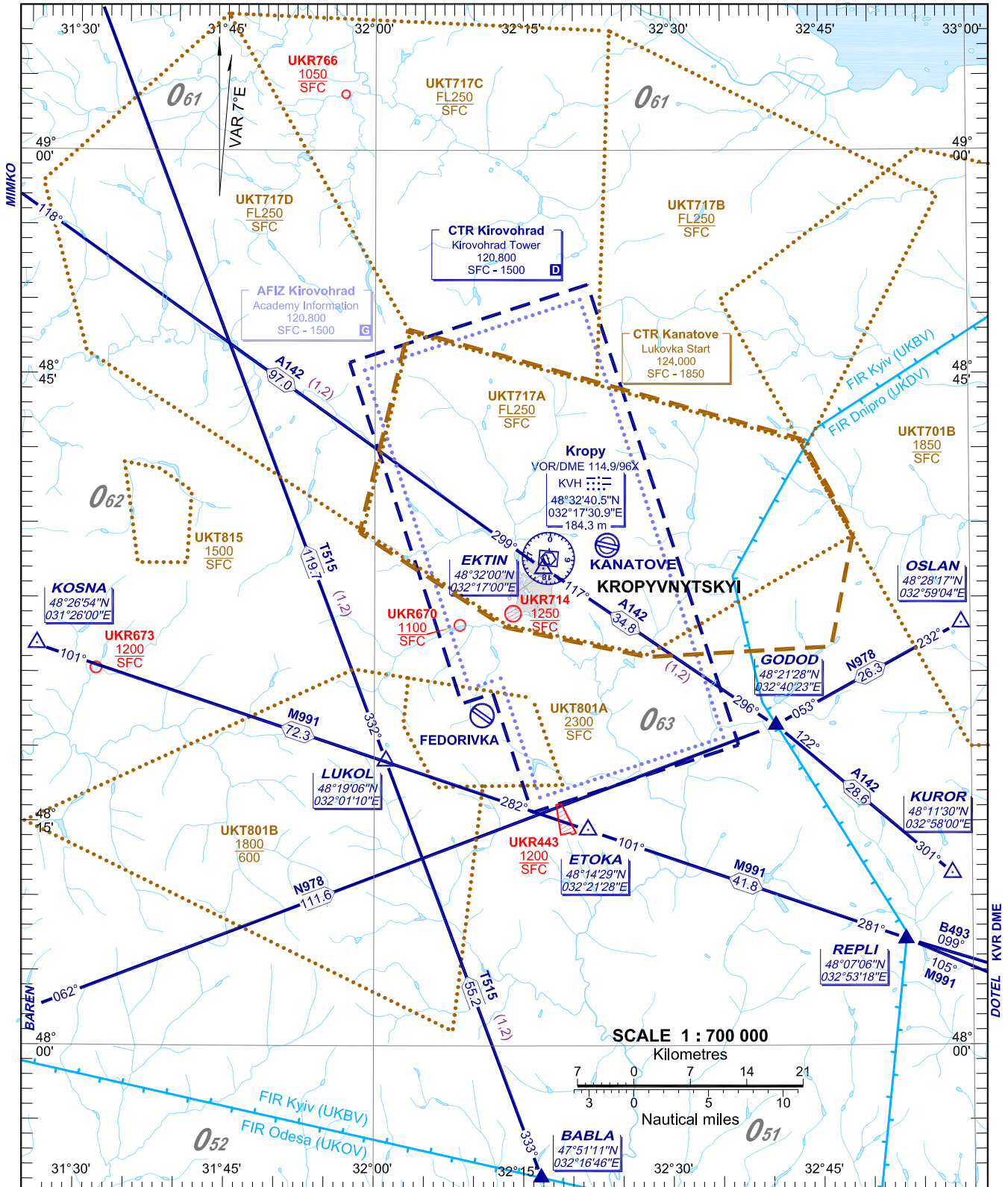
ELEVATIONS AND DIMENSIONS IN METRES,
BEARINGS ARE MAGNETIC

CHANGE: ELEV; TWY 2; ACFT STANDS 38-43 deleted.

**ARRIVAL, DEPARTURE
AND TRANSIT ROUTES**

AREA CHART-ICAO

CTR/AFIZ KIROVOHRAD



NOTE:

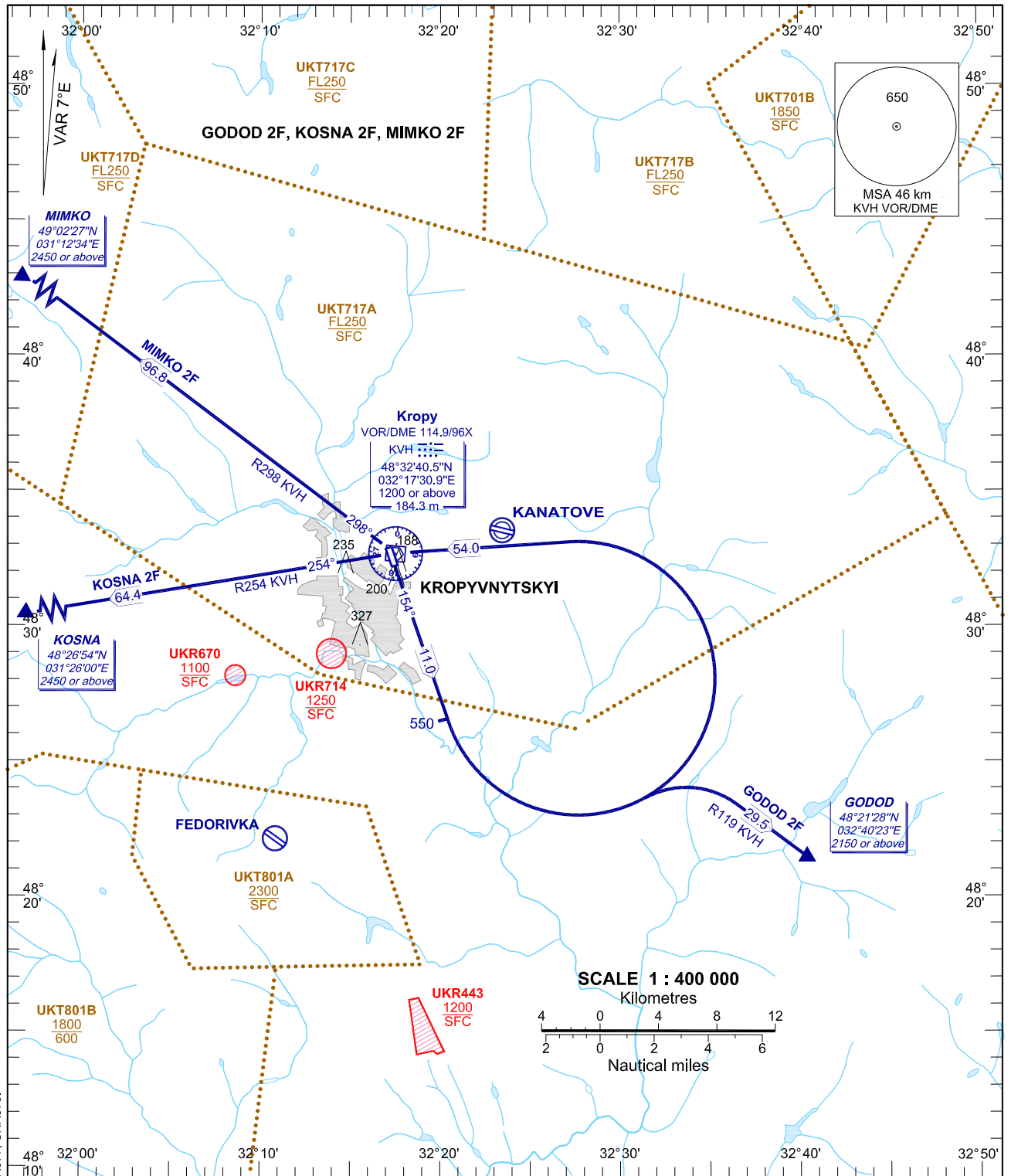
BEARINGS AND TRACKS ARE MAGNETIC
ALTITUDES, HEIGHTS AND ELEVATIONS ARE IN METRES
DISTANCES ARE IN KILOMETRES

STANDARD DEPARTURE CHART
INSTRUMENT (SID)-ICAO

TRANSITION LEVEL: by ATC
TRANSITION ALT: 3050

TWR 120.800
AFIS 120.800

KIROVOHRAD
RWY 15



CHANGE: Deleted UKR672, UKR676, UKR677, UKR678.

NOTE:

BEARINGS AND TRACKS ARE MAGNETIC
ALTITUDES, HEIGHTS AND ELEVATIONS ARE IN METRES
DISTANCES ARE IN KILOMETRES

SID RWY 15

SID RWY 16

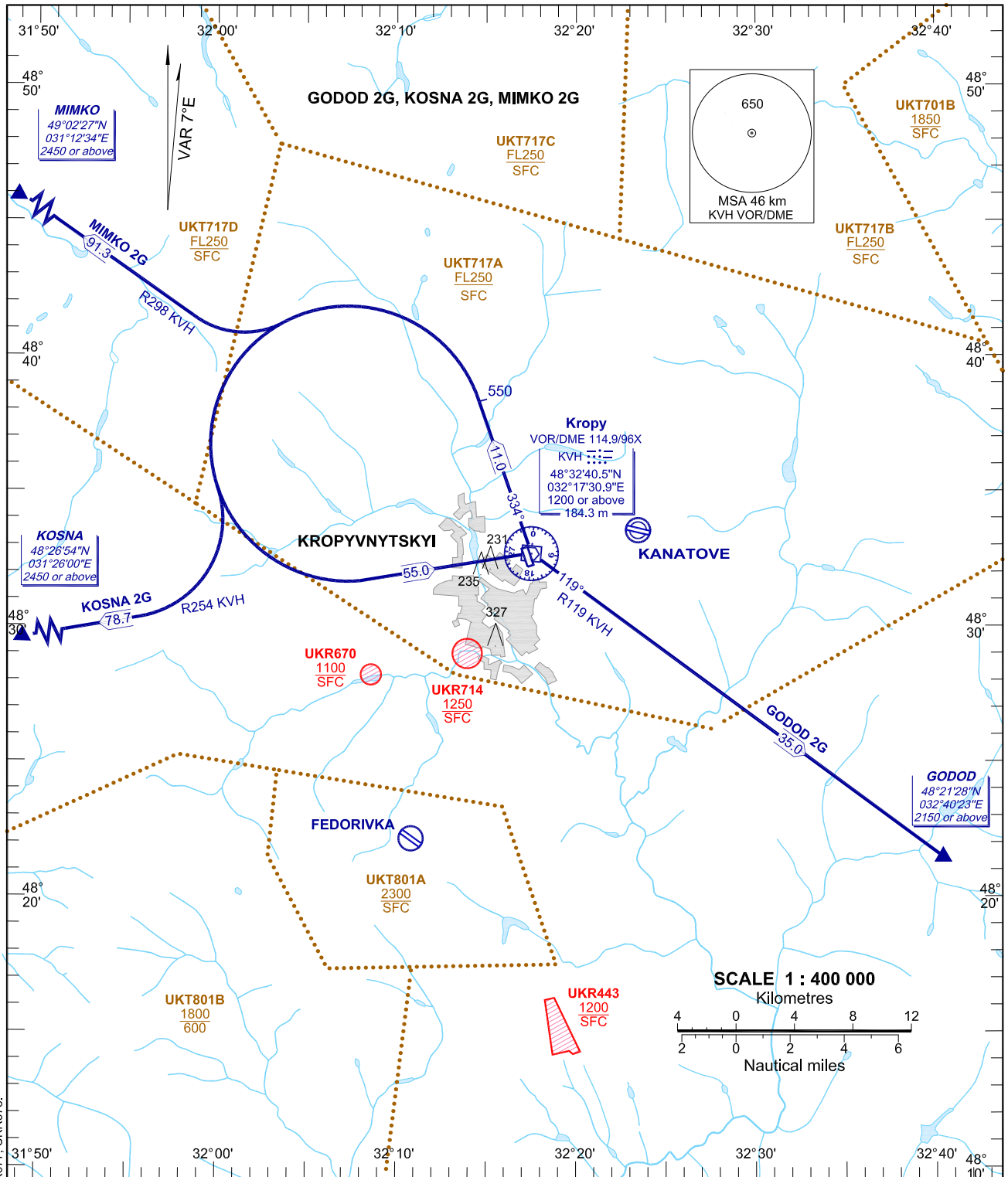
Designator	Route	Altitude	Remarks
MIMKO 2F MIMKO TWO FOXTROT	On track 154° climb to 550, turn LEFT to KVH VOR/DME, turn RIGHT on track 298° (R298 KVH VOR) to MIMKO	Cross KVH VOR/DME at 1200 or above, MIMKO at 2450 or above	nil
KOSNA 2F KOSNA TWO FOXTROT	On track 154° climb to 550, turn LEFT to KVH VOR/DME, turn LEFT on track 254° (R254 KVH VOR) to KOSNA	Cross KVH VOR/DME at 1200 or above, KOSNA at 2450 or above	nil
GODOD 2F GODOD TWO FOXTROT	On track 154° climb to 550, turn LEFT to intercept R119 KVH VOR to GODOD	Cross GODOD at 2150 or above	nil

STANDARD DEPARTURE CHART
INSTRUMENT (SID)-ICAO

TRANSITION LEVEL: by ATC
TRANSITION ALT: 3050

TWR 120.800
AFIS 120.800

KIROVOHRAD
RWY 33



CHANGE: Deleted UKR672, UKR677, UKR678.

NOTE:

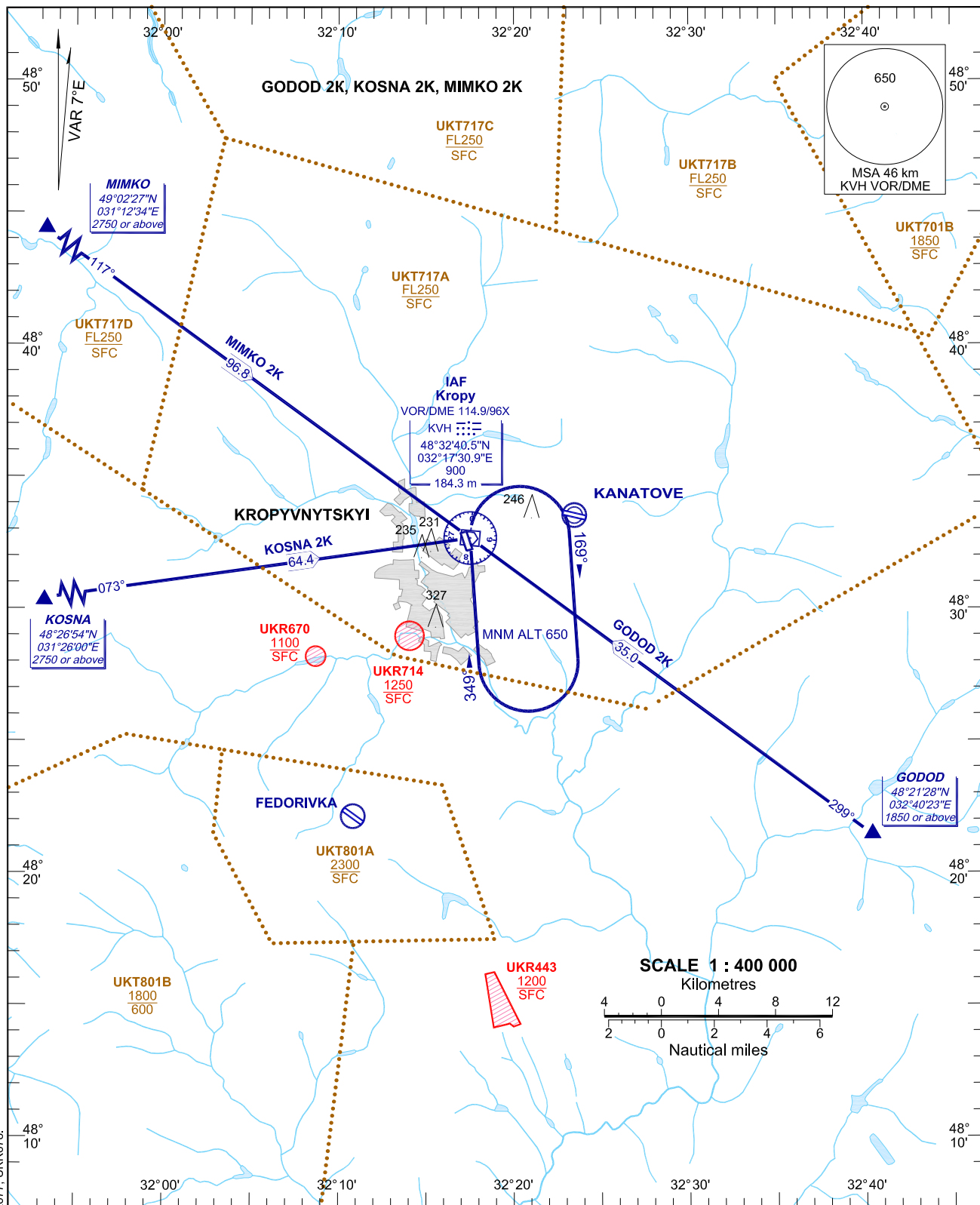
BEARINGS AND TRACKS ARE MAGNETIC
ALTITUDES, HEIGHTS AND ELEVATIONS ARE IN METRES
DISTANCES ARE IN KILOMETRES

SID RWY 33		SID RWY 34	
Designator	Route	Altitude	Remarks
MIMKO 2G MIMKO TWO GOLF	On track 334° climb to 550, turn LEFT to intercept R298 KVH VOR to MIMKO	Cross MIMKO at 2450 or above	nil
KOSNA 2G KOSNA TWO GOLF	On track 334° climb to 550, turn LEFT to intercept R254 KVH VOR to KOSNA	Cross KOSNA at 2450 or above	nil
GODOD 2G GODOD TWO GOLF	On track 334° climb to 550, turn LEFT to KVH VOR/DME, turn RIGHT on track 119° (R119° KVH VOR) to GODOD	Cross KVH VOR/DME at 1200 or above, GODOD at 2150 or above	nil

STANDARD ARRIVAL CHART
INSTRUMENT (STAR)-ICAO

TRANSITION LEVEL: by ATC
TRANSITION ALT: 3050
TWR 120.800
AFIS 120.800

KIROVOHRAD
RWY 15



NOTE:

- 1. For approach use IAC VOR RWY 15 chart.

BEARINGS AND TRACKS ARE MAGNETIC
 ALTITUDES, HEIGHTS AND ELEVATIONS ARE IN METRES
 DISTANCES ARE IN KILOMETRES

CHANGE: Deleted UKR672, UKR676, UKR677, UKR678.

STAR RWY 15

STAR RWY 16

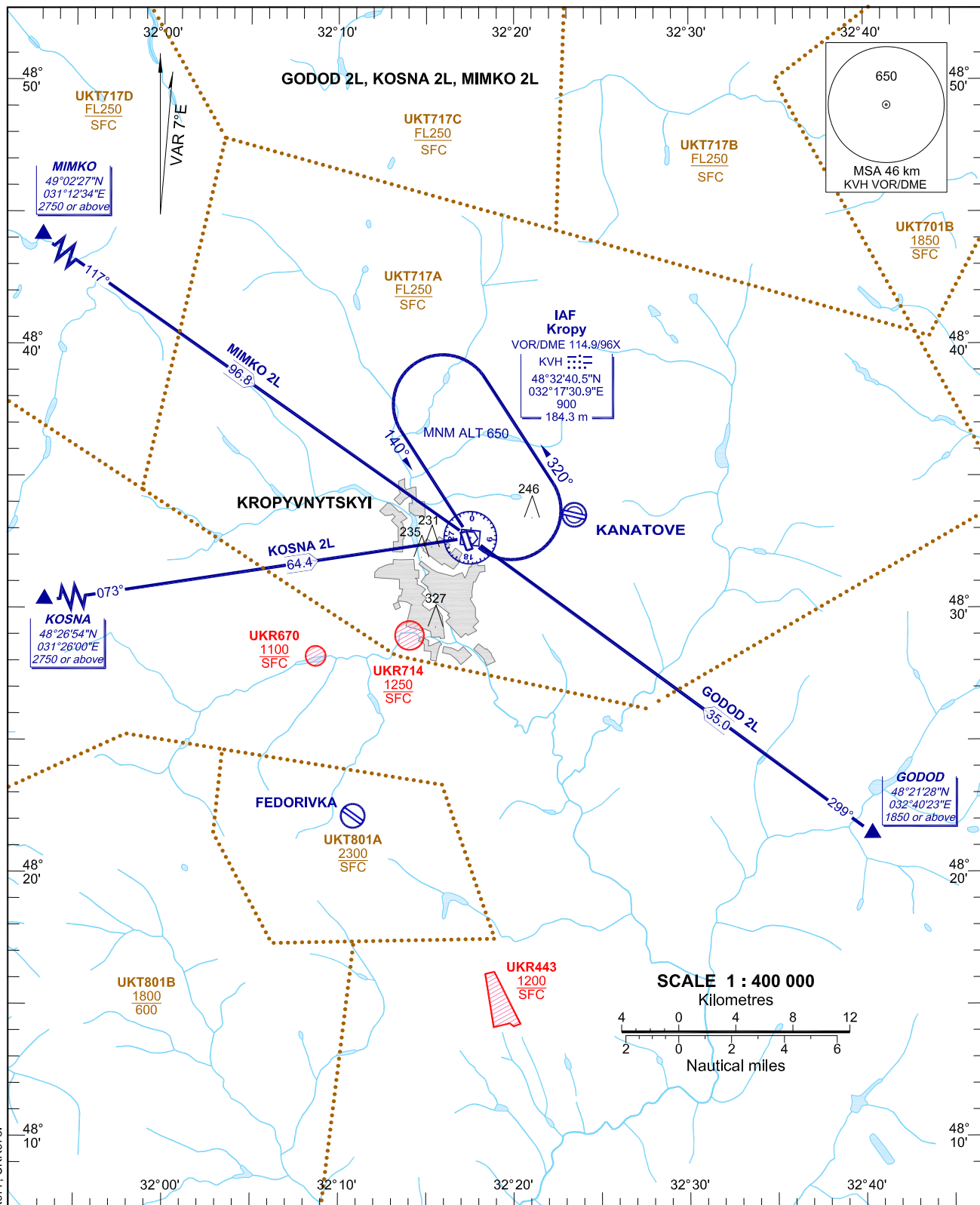
Designator	Route	Altitude	Remarks
MIMKO 2K MIMKO TWO KILO	On track 117° to KVH VOR/DME, then according to approach chart	Cross MIMKO at 2750 or above, IAF KVH VOR/DME at 900	nil
KOSNA 2K KOSNA TWO KILO	On track 073° to KVH VOR/DME, then according to approach chart	Cross KOSNA at 2750 or above, IAF KVH VOR/DME at 900	nil
GODOD 2K GODOD TWO KILO	On track 299° to KVH VOR/DME, then according to approach chart	Cross GODOD at 1850 or above, IAF KVH VOR/DME at 900	nil

STANDARD ARRIVAL CHART
INSTRUMENT (STAR)-ICAO

TRANSITION LEVEL: by ATC
TRANSITION ALT: 3050

TWR 120.800
AFIS 120.800

KIROVOHRAD
RWY 33



NOTE:
1. For approach use IAC VOR RWY 33 chart.

BEARINGS AND TRACKS ARE MAGNETIC
ALTITUDES, HEIGHTS AND ELEVATIONS ARE IN METRES
DISTANCES ARE IN KILOMETRES

CHANGE: Deleted UKR672, UKR676, UKR677, UKR678.

STAR RWY 33

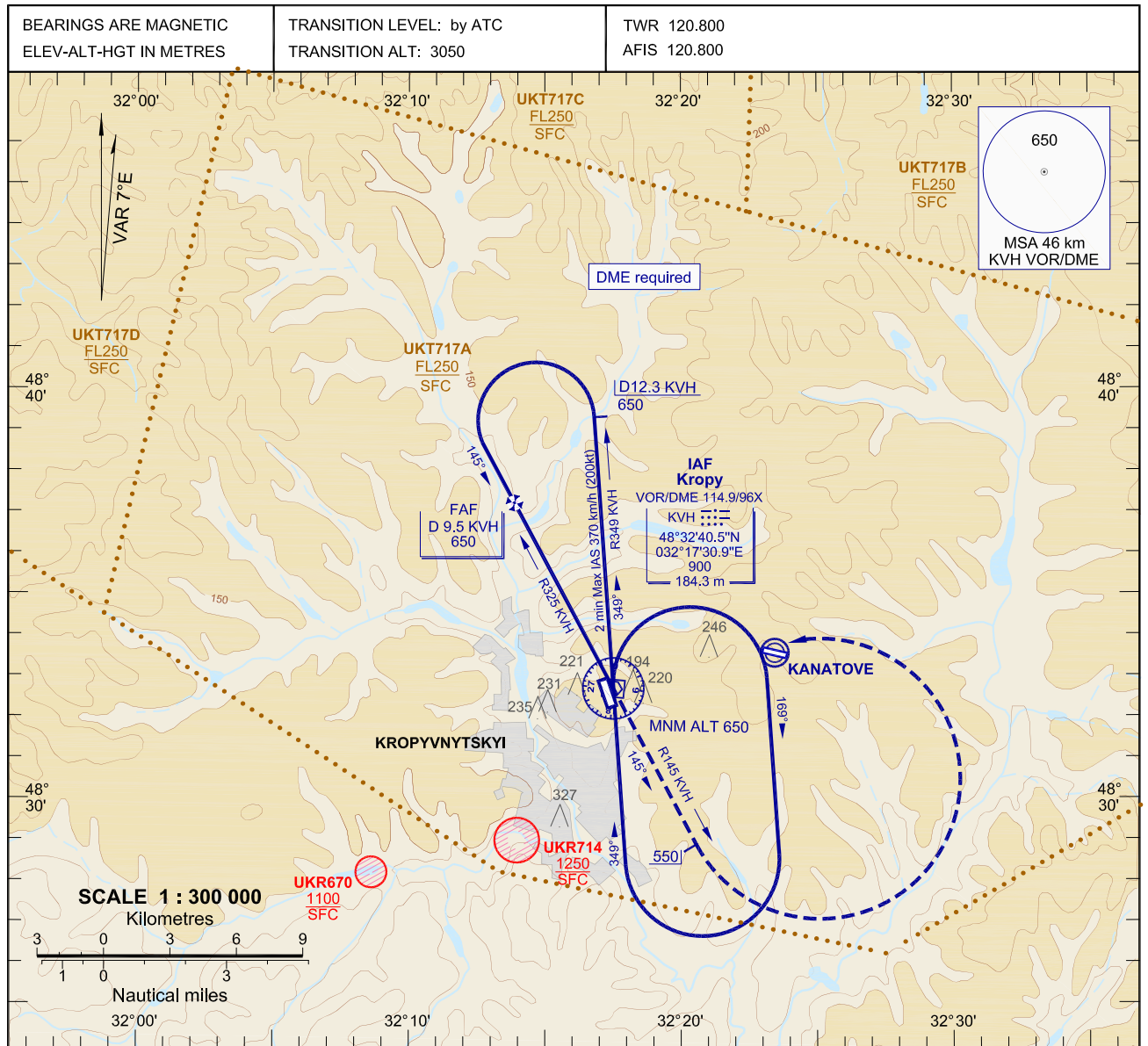
STAR RWY 34

Designator	Route	Altitude	Remarks
MIMKO 2L MIMKO TWO LIMA	On track 117° to KVH VOR/DME, then according to approach chart	Cross MIMKO at 2750 or above, IAF KVH VOR/DME at 900	nil
KOSNA 2L KOSNA TWO LIMA	On track 073° to KVH VOR/DME, then according to approach chart	Cross KOSNA at 2750 or above, IAF KVH VOR/DME at 900	nil
GODOD 2L GODOD TWO LIMA	On track 299° to KVH VOR/DME, then according to approach chart	Cross GODOD at 1850 or above, IAF KVH VOR/DME at 900	nil

INSTRUMENT APPROACH CHART
(IAC)-ICAO

AD ELEV 174 m

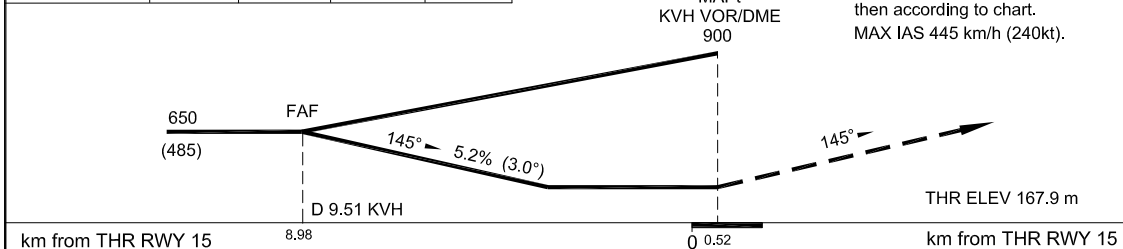
KIROVOHRAD
VOR RWY 15



KVH DME, km	9.0	7.0	5.0	3.0
DIST THR, km	8.48	6.48	4.48	2.48
ALT(HGT), m	625(460)	520(355)	420(250)	315(145)

MISSED APPROACH:

Climb on track 145° (R145 KVH VOR) to 550(385), turn LEFT to KVH VOR climbing 650(485), then according to chart.
MAX IAS 445 km/h (240kt).



OCA/H	A	B	C	D					
Straight-in Approach	KVH VOR	295(130)	295(130)	295(130)	295(130)				
Circling	315(145)	340(170)	450(280)	450(280)					
GROUND SPEED	km/h	150	180	210	240	270	300	330	360
FAF - MAPt 9511 m	min:s	3:48	3:10	2:43	2:23	2:07	1:54	1:44	1:35
RATE OF DESCENT	m/s	2.2	2.6	3.0	3.5	3.9	4.3	4.8	5.2

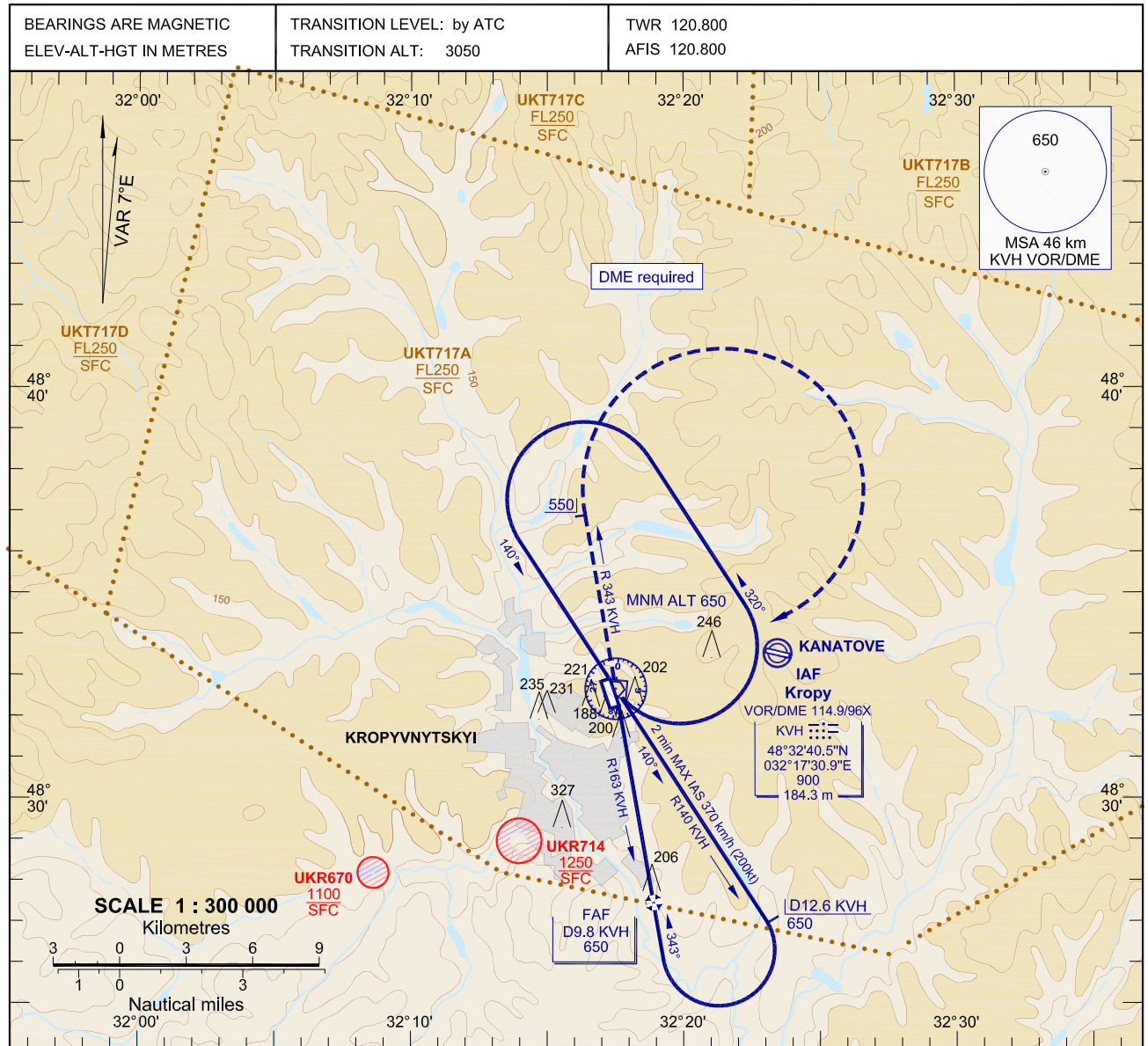
NOTE:

CHANGE: added UKT717C; deleted UKR676, UKR677, UKR678.

INSTRUMENT APPROACH CHART
(IAC)-ICAO

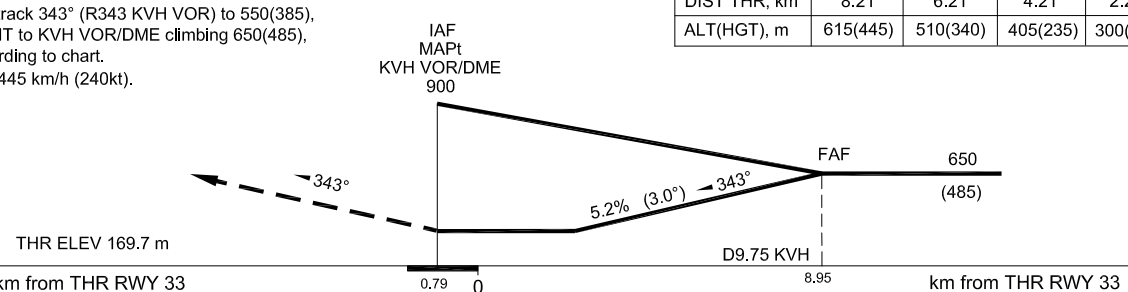
AD ELEV 174 m

KIROVOHRAD
VOR RWY 33



MISSED APPROACH:
Climb on track 343° (R343 KVH VOR) to 550(385),
turn RIGHT to KVH VOR/DME climbing 650(485),
then according to chart.
MAX IAS 445 km/h (240kt).

KVH DME, km	9.0	7.0	5.0	3.0
DIST THR, km	8.21	6.21	4.21	2.21
ALT(HGT), m	615(445)	510(340)	405(235)	300(130)



OCA/H	A	B	C	D					
Straight-in Approach	KVH VOR	285(115)	285(115)	295(125)	300(130)				
Circling	315(145)	340(170)	450(280)	450(280)					
GROUND SPEED	km/h	150	180	210	240	270	300	330	360
FAF - MAPt 9751 m	min:s	3:54	3:15	2:47	2:26	2:10	1:57	1:46	1:38
RATE OF DESCENT	m/s	2.2	2.6	3.0	3.5	3.9	4.3	4.8	5.2

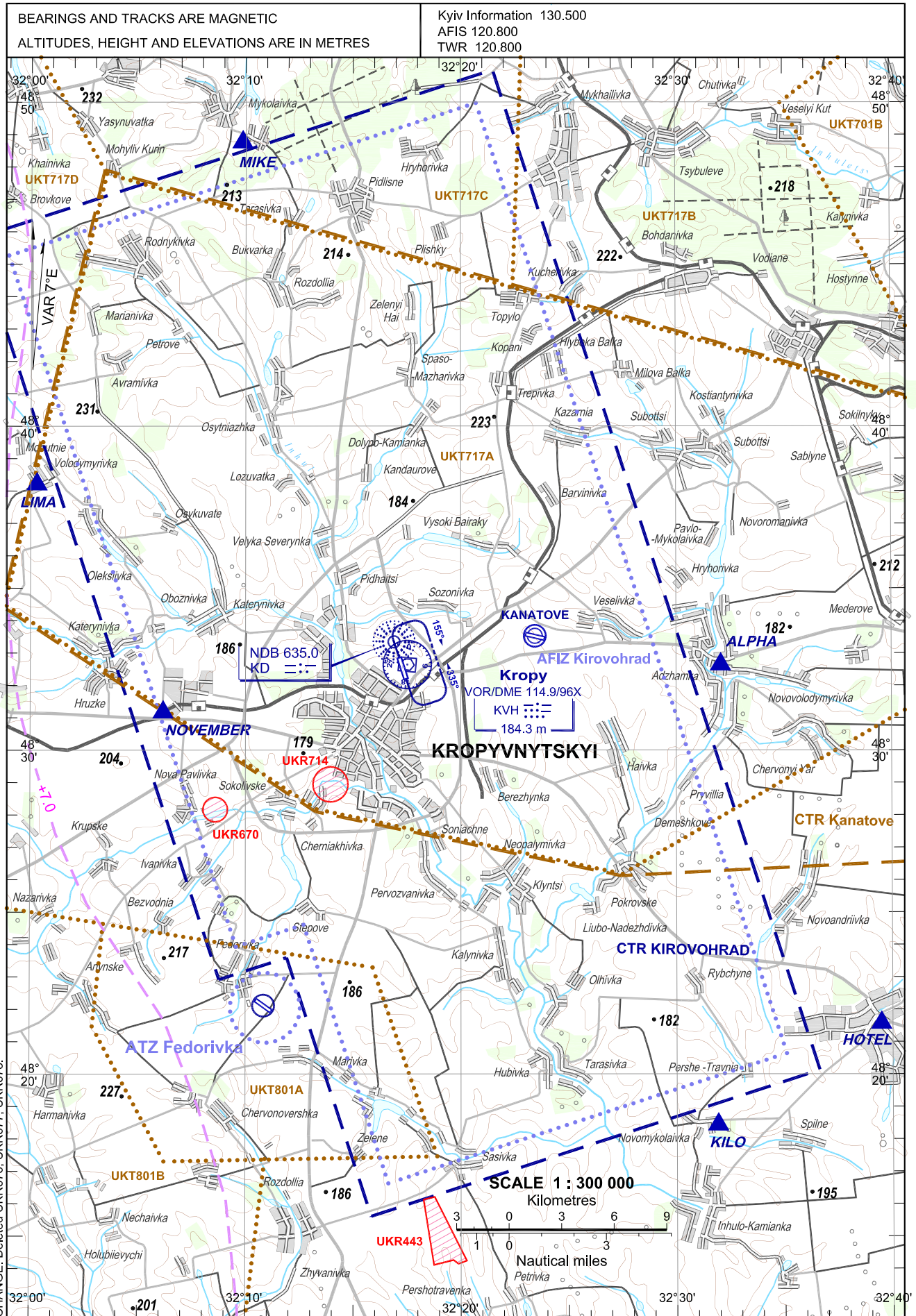
NOTE:

CHANGE: Deleted UKR676, UKR677, UKR678.

VISUAL APPROACH CHART

AD ELEV 174 m

KIROVOHRAD



CHANGE: Deleted UKR676, UKR677, UKR678.

Designation	Vertical limits and airspace Class	Call signs and frequencies (MHz)
CTR Kirovohrad	1500/SFC Class D	Kirovohrad Tower 120.800
AFIZ Kirovohrad	1500/SFC Class G	Academy Information 120.800
CTR Kanatove	1850/SFC Unclassified	Lukovka Start 124.000
ATZ Fedorivka	500/SFC Unclassified	Fedorivka 131.250

Designation	Vertical limits and airspace Class
UKR443	1200/SFC Unclassified
UKR670	1100/SFC Unclassified
UKR714	1250/SFC Unclassified

Designation	Vertical limits and airspace Class
UKT701B	1850/SFC Unclassified
UKT717A	FL250/SFC Unclassified
UKT717B	FL250/SFC Unclassified
UKT717C	FL250/SFC Unclassified
UKT717D	FL250/SFC Unclassified
UKT801A	2300/SFC Unclassified
UKT801B	1800/600 Unclassified

Prescribed VFR Routes

Waypoint Name	Coordinates	Description	Waypoint name for planning purposes
ALPHA	483241N 0323204E	Church at Adzhamka village	UKKGA
HOTEL	482135N 0323928E	Church at Novhorodka town	UKKGH
KILO	481830N 0323155E	Novomykolaivka village	UKK GK
LIMA	483813N 0320016E	Volodymyrivka village	UKKGL
MIKE	484847N 0320949E	Lake at Mykolaivka village	UKKGM
NOVEMBER	483100N 0320614E	Railway crossing west of Nove town	UKKGN
KD NDB	483322.0N 0321654.0E	-	-
KVH VOR/DME	483240.5N 0321730.9E	-	-